

## Northland May Add Second Freighter

By LARRY STANWOOD

A second freighter may be added to Northland Navigation's weekly service into Prince Rupert if the present trend of increased shipping is maintained, a development which would make this city one of the best serviced ports on the northwest Pacific coast.

Including the 250 tons of cargo unloaded here weekly by Northland's Island Prince, well over 1000 tons is being received at Prince Rupert's docks each week via water shipments.

Northland Navigation brought the Island Prince into service here to fill a breach when Union Steamships were no longer able to operate a twice-a-week service. Fresh produce merchants who found it difficult to provide adequate service to their customers on a weekly supply basis pressed for action from civic authorities and from the Chamber of Commerce.

Unless they could depend on shipments of perishable foods at least twice a week, much of their business would be ruined, the merchants said. But Union maintained they couldn't return to former service, and so the problem remained unsolved for several months.

A major influence on Northland's decision to operate a scheduled freighting service into Prince Rupert were Whalen's Cartage Ltd., the firm which handles all of Northland's through bill-of-lading traffic

into the interior as far as Burns Lake, and G. W. Nickerson, agents for B.C. Steamships, which company was reorganized to form Northland.

Whalen's now operate three three-ton trucks regularly servicing interior points on the Skeena Highway with consigned shipments received on the Island Prince. Head of the cartage firm is Harold Whalen, mayor of Prince Rupert, as president. Vice-president is Don Fitch, a former alderman here.

Besides operating a complete cartage service, Whalen's also continue their labelling for fishing companies. As agents for Wells Ltd., of Vancouver, Whalen's label cases of canned salmon for Nelson Bros. Ltd., Canadian Fishing Company Limited and B.C. Packers Ltd., as well as draw samples from certain cases for government inspection.

Besides operating the Island Prince, Northland numbers among its fleet of five ships the larger Alaska Prince which tramps the coast from Vancouver to Alaska and docks here

about every 10 days, and the Pacific Prince which makes a scheduled freight run weekly into Kitimat. Head of the firm is Capt. H. J. T. Terry whose visits to Prince Rupert are no rarity.

Two trucks, a one-ton special and a five-ton heavy duty, accompanied Don Forward to Kitimat on the Princess Norah Sunday evening to take their part in an era of west coast business history.

Within the next few weeks, Mr. Forward will open up the first business in B.C.'s newest city-to-be when Kitimat Builders Supplies Ltd. begins trading at the site of Alcan's \$500,000,000 aluminum smelter operation.

Kitimat Builders Supplies Ltd. with head offices in Prince Rupert, has named Mr. Forward manager. Formerly operating his own business of Prince Rupert Supply House, he is probably best known for his work in the Civic Centre here of which he was secretary-manager from its inception until the fall of 1951.



JOSEPH FISCHER, son of Mr. and Mrs. Joseph Fischer of Montreal, is believed held a prisoner-of-war by the Russians. The parents say their son was visiting Yugoslavia when the Second World War started and he was drafted into the German army. In 1945 the Red Cross told the parents their son was a Russian prisoner. Recently released prisoners said the Russians still held one Canadian and the Fischers believe it is their son.

## Churchill May Clarify Rumors He Thinking of Trip to Moscow

LONDON (AP)—Prime Minister Churchill is expected to throw some light today on persistent rumors that he is thinking of making a one-man peace pilgrimage to Moscow if Britain's allies continue to cold-shoulder his idea of top-level East-West talks.

Several members of the Opposition Labor party announced they will question the Conservative leader on this and other major policy matters when Parliament reassembles today.

The prime minister's aides said he may make his position clear at that time. Foreign Secretary Eden also was scheduled to make a statement during the opening session of the House of Commons on the decisions reached by the Big Three foreign ministers last week-end.

### STILL HAS HOPES

Churchill was said not to have abandoned his original proposal for an intimate round-table discussion of all of the world's problems which are causing tension.

He was said to have broached

the subject to U.S. State Secretary Dulles during the Big Three foreign ministers meeting here last week-end, but Dulles was reported to be cold to the idea even though he did not close the door on the proposal.

Churchill, who will be 79 next month, made his first call for talks on the highest level last spring.

Arrangements for a meeting with President Eisenhower and France's Premier Laniel in Bermuda to prepare for such a meeting with Soviet Premier Malenkov were postponed and

then called off altogether because Churchill's doctors ordered him to take a rest.

Most British newspapers renewed reports today, attributed to unnamed diplomatic sources in Paris, that Churchill was determined to try to arrange a direct approach to Malenkov even if he has to go it alone.

The reports said if necessary Churchill is willing to fly to Moscow for such a meeting.

PROUD OF ITS AGE

**Wiser's**  
DE LUXE WHISKY  
IN SMART DECANTER

This advertisement is not published or displayed by the Liquor Control Board or by the Government of British Columbia.

always insist on..

**DELNOR**  
..foremost in frozen food

### Veteran Tug, Salvage King Sinks at Berth

VICTORIA (CP)—Hundreds of thousands of gallons of water poured on a stubborn, unreachable fire resulted in one of the biggest tugs on the Pacific coast sinking at her berth in Victoria harbor Monday.

The Pacific Salvage Company tug Salvage King, a \$750,000 veteran of many salvage operations on the British Columbia coast, is resting on the bottom of Victoria harbor waiting for sister ships to start salvage operations. Only her superstructure is above water.

The fire broke out in the fore-castle of the tug early Monday. The heat and smoke from burning bedding and ship stores was so intense that firemen, wearing masks, could not get near the blaze.

### GREAT PALACE

Buckingham Palace, built by the Duke of Buckingham in 1703, was purchased by George III in 1762.

Luxury Steamer  
**Prince George**  
SAILS FOR

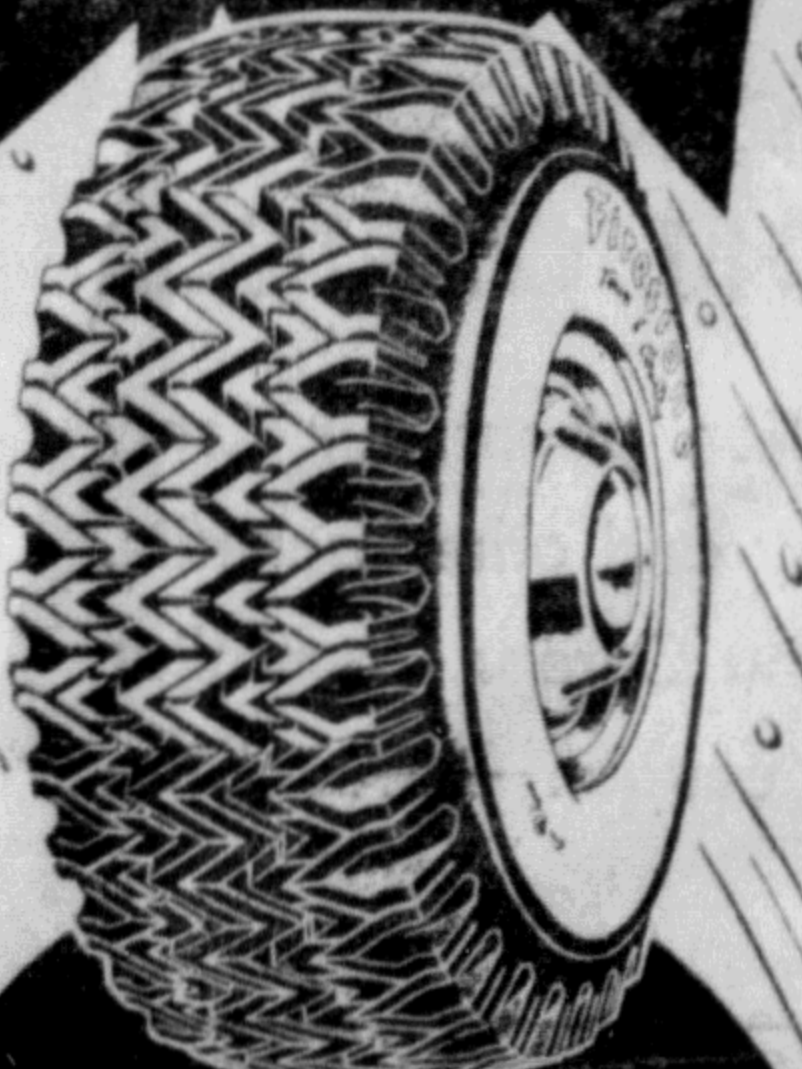
**VANCOUVER**  
and Intermediate Ports  
Each Thursday  
at 11:15 pm.

For KETCHIKAN  
WEDNESDAY Midnight  
Comfort and Service

For reservations write or  
call City or Depot Office,  
Prince Rupert, B.C.

**CANADIAN NATIONAL**

Here's the Greatest  
Mud, Snow & Ice Tire  
ever built!



**Firestone**  
**TOWN & COUNTRY**  
for Rural or City Driving  
**OUTPERFORMS** and  
**OUTWEARS** any  
traction tire ever built

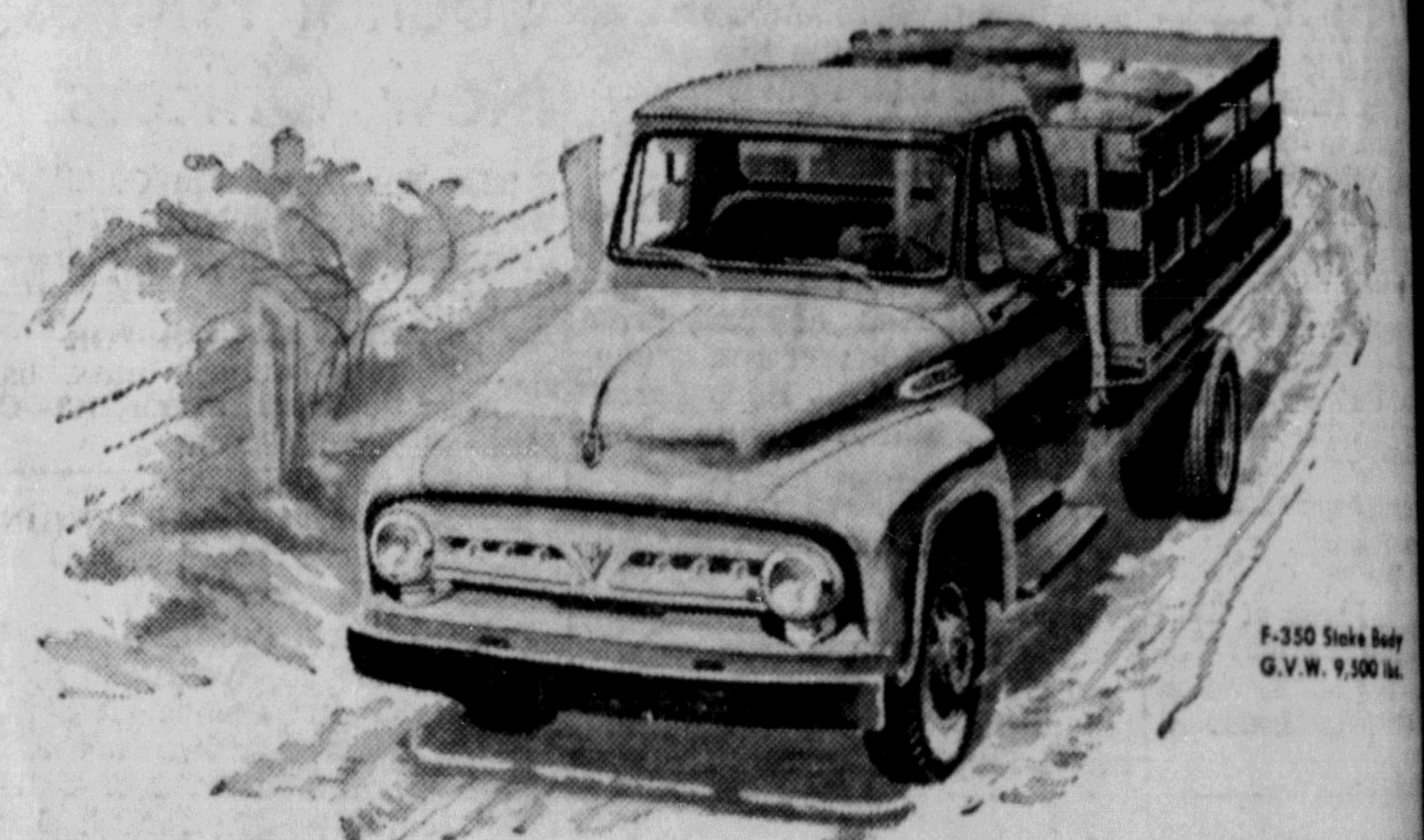
• NO VIBRATION—NO WHINE  
**GUARANTEED**  
Factory Craft  
**NEW TREADS**

**BOB PARKER LTD.**

"The Home of Friendly Service"  
Phone 93

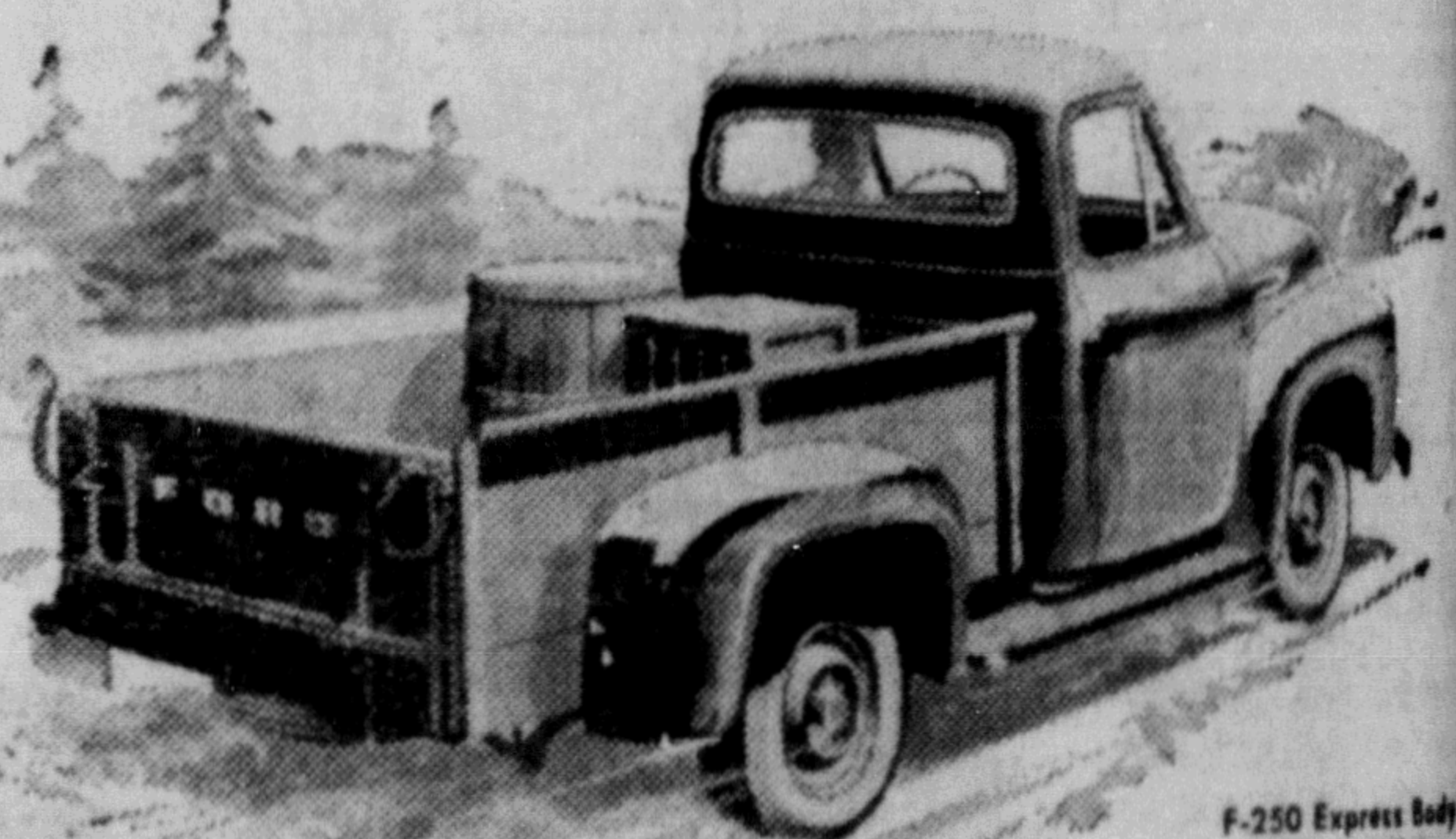


F-750 Dump Body  
G.V.W. 19,500 lbs.



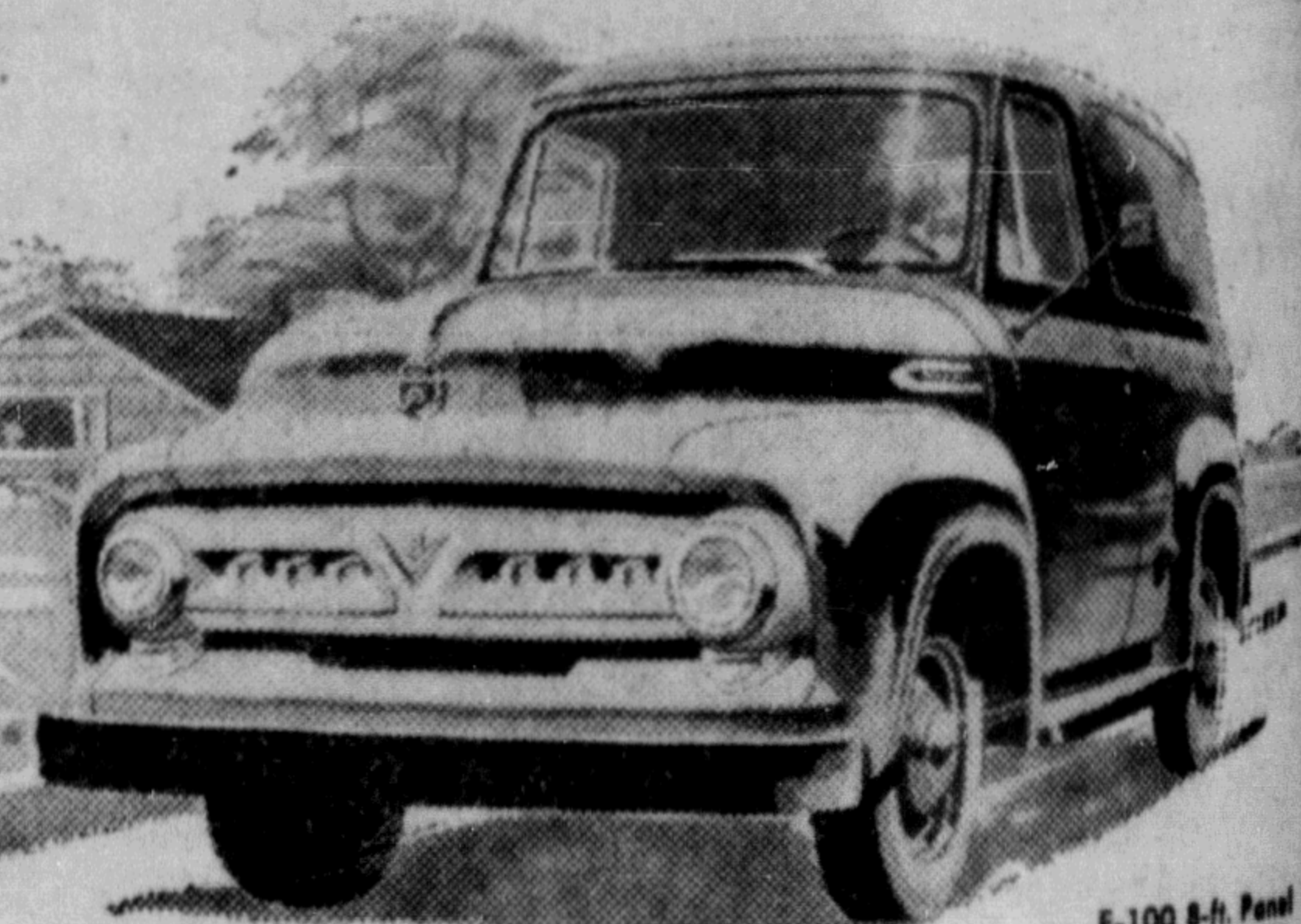
F-350 Stake Body  
G.V.W. 9,500 lbs.

Profit-killing trucking costs go overboard when you use Ford Economy Trucks to haul your loads! Whatever your cargoes, you can haul them for less per ton-mile with thrifty Ford Trucks.



F-250 Express Body  
G.V.W. 6,900 lbs.

Ford Trucks cost you less on the road. Dependable V-8 power pulls more on tougher routes for every gallon of gas. Ford Driverized design—with shorter wheelbases and wider front treads—gives time-saving, money-saving manoeuvrability.



F-100 8-h. Panel  
G.V.W. 4,900 lbs.

Ford Trucks cost you less to keep going. Frames, chassis, cabs, transmissions, all working parts are tougher and longer-lived... turn in bigger earnings for every hour of work.

**FORD TRUCKS**  
economy  
Save time! Save money! Last longer!



SEE YOUR FORD TRUCK DEALER

PRINCE RUPERT  
B.C.

**BOB PARKER LIMITED**  
"The Home of Friendly Service"

TERRACE  
B.C.

LOOK FOR THE SIGN OF VALUE WHEN YOU BUY A USED TRUCK — SEE YOUR FORD TRUCK DEALER