

# Scientists Use Canada's Largest Swimming Pool

OTTAWA —If National Research Council scientists went in for swimming on the job, they have Canada's biggest swimming pool to do it in.

As it is, they use their pool—450 feet long, 25 feet wide and 10 feet deep—to solve problems of naval design for the Royal Canadian Navy and for civilian ship-building firms.

They use the pool to find out how a new ship design fresh from the drafting-board of the naval architect will behave in the water.

Scale models of the new ships are either towed along on the glass-smooth 700,000-gallon pool or fitted with electric motors complete with scale-model screws and allowed to run themselves.

**RADICAL DESIGNS**  
From data derived from these tests come craft of radically new design.

The specifications of a new type of flat-bottomed tug which will soon be chugging across Great Bear Lake in the Northwest Territories were drawn up from data calculated at the NRC tank. So also were specifications for a new car ferry which will ply between islands of the Pa-

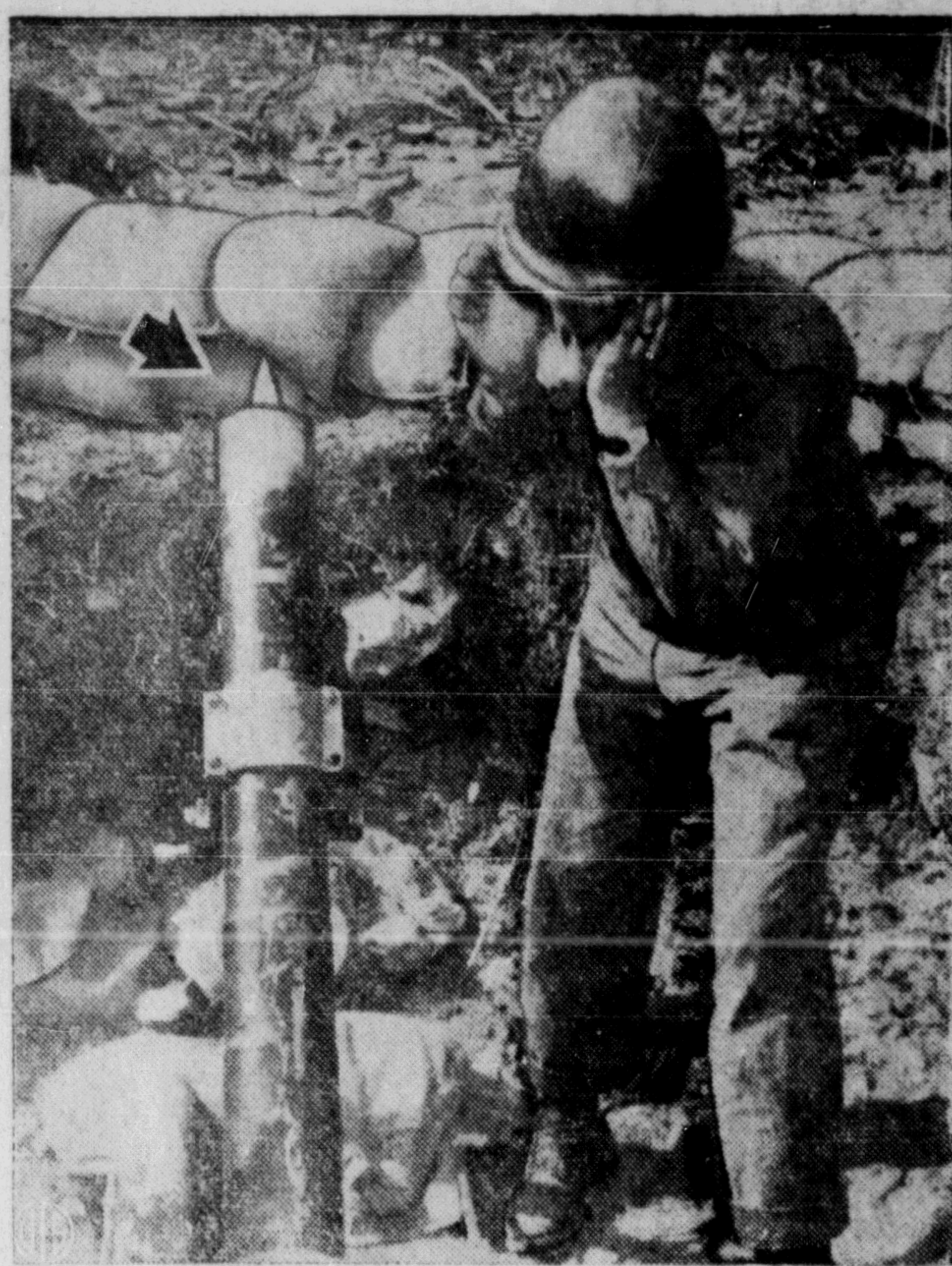
cific Coast and for a new type of lifeboat which may some day brave the gales of the North Atlantic.

Calculating ship specifications is more complicated than specifications for aircraft or submarines. An aircraft flies wholly in the air and a submarine moves wholly under water and either type of craft meets only one type of resistance. But a ship which runs part in the water and part out meets both a water drag and a surface friction drag.

The rig the NRC uses to tow the models is therefore fitted with a variety of instruments, many of local design, for recording the two types of drag. The rig operates by electric current from overhead trolleys, trolleys within 1-100th of an inch.

**REALISTIC CONDITIONS**  
Everything possible is done to simulate the action of a ship making its way through the water.

The testing pool is the property of the NRC's division of mechanical engineering which also operates supersonic wind tunnels for aircraft research, an engine laboratory and a low-temperature laboratory.



THIS IS THE SORT OF THING that makes truce talks seem thousands of miles away for the soldiers on the firing line in Korea. Arrow points to shell leaving a 4.2 mortar on its way to enemy-held positions as crew member holds his ears.

## Much Lighter 46-Man RCMP Contingent Leaves For Home

SOUTHAMPTON, Eng. (CP) — Twenty pounds a man lighter, the RCMP Coronation contingent sailed today for Halifax and the less hectic tasks of keeping Canada's criminals under control.

The two-month period of horseback riding and hospitality had a slimming effect on the 46-man unit.

"Some of the men were alarmed but it's quite natural," said Staff Sgt. C. W. Anderson of Ottawa, riding instructor.

"The hard work and long hours always knock down the weight

when it's a fellow's first trip."

Despite the rigors of the adulation inflicted by Britons, the Mounties were sorry to leave—except for British haircuts.

Crew cuts are standard styles for most of the RCMP—a type British barbers don't have much demand for.

"I tried several barbershops," said Constable Duncan Donald of Ottawa. "Although they all said they had never cut it like that before, they were willing to try."

"But it looks as though it's been chewed off."

## BLACKWOOD on Bridge

By EASLEY BLACKWOOD

Squeeze Saves the Day  
When Things Look Bleak

Mr. Champion muttered a little when he saw the dummy in today's hand. This was not so much that Mr. Dale had overbid his cards as that Mr. Champion found himself unable to count up to 12 tricks.

Even if he could get four heart tricks, he had only 11 winners in sight. The queen of clubs was opened and he won with the ace. He laid down the ace of hearts and Mr. Abel followed suit with the nine.

Was that a singleton or (happy thought) had Mr. Abel started with J 9 doubleton? Mr. Champion realized that if the nine were a singleton, it would be fatal to cash another high heart.

That would drop dummy's 10 and eventually Mrs. Keen would hold J-7 over the 8-5. In that case, he would win exactly three tricks in hearts.

To make sure of at least four heart tricks, he entered dummy with the queen of spades and led the 10 of hearts. Mr. Abel discarded a small club and the 10 was finessed, losing to Mrs. Keen's jack.

Back came the jack of clubs and dummy's king won. Mr. Champion discarding a small diamond. Still only 11 tricks in sight.

However, there was always the chance that a squeeze might develop. Mr. Champion returned to his hand with the ace of spades and noted that Mrs. Keen played the jack.

It now appeared that Mr. Abel had the spade suit stopped. That wasn't good, but if he also had the queen, 10 and nine of diamonds or any five diamonds, so the burden of stopping that suit was also his alone, then he was gone.

Mr. Champion cashed his ace and king of diamonds, then his three good hearts, discarding clubs from the board. On the last heart Mr. Abel had to get down to two cards.

He had left the 10 and one spade and the queen of diamonds. If he played a spade,

South dealer			
Both sides vulnerable			
North			
(Mr. Dale)			
S—K Q 9 7			
H—10 2			
D—J 3			
C—K 8 7 5 4			
East			
(Mr. Abel)			
S—10 6 5 4			
H—J 7 6 4 3			
D—7 2			
C—Q J 10 9			
South			
(Mr. Champion)			
S—A 8 3			
H—A K Q 8 5			
D—A K 8 6			
C—A			
The bidding:			
South	West	North	East
2 H	Pass	3 C	Pass
3 D	Pass	3 S	Pass
6 NT	All pass		

both of dummy's remaining spades would be good. He therefore discarded the diamond and Mr. Champion won the last two tricks with the eight of diamonds and the king of spades.

## Vote to Cost \$5,500,000

OTTAWA —The federal election will cost an estimated \$5,500,000. Some of this will come back to the treasury in candidates' lost deposits.

Each candidate must post a \$200 deposit, which is forfeited if he fails to poll more than half the votes of the winning candidate in his riding. In double ridings, he has to get at least half the total of the low-vote winning candidate.

In 1949, the treasury picked up \$72,000 from the loss deposits of 300 candidates out of the 850 in the running. The high point in revenue from this source came in 1945, when 462 candidates lost \$92,400.



**BURNETT'S WHITE SATIN GIN**  
**BURNETT'S LONDON DRY GIN**

This advertisement is not published or displayed by the Liquor Control Board or by the Government of British Columbia.

## RADIO DIAL 1240 kc. CFPR

(Subject to Change)

MONDAY		10:15—Quiet Song
5:25—International Commentary	10:30—Battle of the Atlantic	10:45—Songs and Singers
5:30—UN Today	11:00—Weather Report	11:00—Music Till Midnight
5:45—CBC News; Weather Report	12:00—Sign-off	
5:55—Have You Heard?		
6:00—B.C. Automobile Assn. Talk		
6:05—Supper Serenade		
6:30—B.C. Hospital Insurance Talk by Hon. Eric Martin		
6:35—Supper Serenade		
7:00—CBC News		
7:15—CBC News Roundup		
7:30—Progressive Conservative Talk		
8:00—The Dreamers		
8:15—CBC Symphony Orch.		
9:00—Now I Ask You		
9:30—Here's Juliette		
10:00—CBC News		
10:10—CBC News		

TODAY to WEDNESDAY — TWO FEATURES  
Dan Dailey - Constance Smith  
In

## "TAXI"

Also on the Same Program:

## "BLACK SWAN"

ALSO - - NEWS

Times:

Taxi 7:00 - 9:56  
Black Swan 8:17 A FAMOUS PLAYERS THEATRE

ENDS TODAY DORIS DAY — GORDON MACRAE  
7 and 9:05 "LIGHT OF THE SILVER MOON"



Today to Wednesday  
"THE GIRL"—7:00 and 9:25 p.m.  
"DESPERATE"—8:14 Only



TOTEM  
A Famous Players Theatre

## ARROW BUS LINES LTD.

Public Passenger Time Schedule No. 6

Issued pursuant to the provisions of the "Motor Carrier Act" and Regulations thereunder.

Issued 10 July, 1953. Effective: July 18, 1953

PUBLIC PASSENGER TIME SCHEDULE  
between  
PRINCE RUPERT DEPOT AND PORT EDWARD

Leaves Depot Daily

Outbound

Leave	Leave	Leave	Arrive
Prince Rupert	Miller May	Watson Island	Port Edward
7:00 a.m.	7:20 a.m.	7:35 a.m.	7:40 a.m.
9:10 a.m.	9:30 a.m.	9:45 a.m.	9:50 a.m.
12:30 p.m.	12:50 p.m.	1:05 p.m.	1:10 p.m.
2:30 p.m.	2:50 p.m.	3:05 p.m.	3:10 p.m.
4:30 p.m.	4:50 p.m.	5:05 p.m.	5:10 p.m.
5:30 p.m.	5:50 p.m.	6:05 p.m.	6:10 p.m.
6:30 p.m.	6:50 p.m.	7:05 p.m.	7:10 p.m.
9:30 p.m.	9:50 p.m.	10:05 p.m.	10:15 p.m.
11:30 p.m.	11:50 p.m.	12:05 p.m.	12:15 p.m.

Inbound

Leave	Leave	Leave	Arrive
Port Edward	Watson Island	Miller Bay	Prince Rupert
8:15 a.m.	8:20 a.m.	8:30 a.m.	8:55 a.m.
10:00 a.m.	10:05 a.m.	10:20 a.m.	10:40 a.m.
1:30 p.m.	1:35 p.m.	1:50 p.m.	2:10 p.m.
3:40 p.m.	3:45 p.m.	4:00 p.m.	4:20 p.m.
5:15 p.m.	5:20 p.m.	5:30 p.m.	5:50 p.m.
6:15 p.m.	6:25 p.m.	6:40 p.m.	7:00 p.m.
7:30 p.m.	7:40 p.m.	8:00 p.m.	8:20 p.m.
10:15 p.m.	10:20 p.m.	10:30 p.m.	10:50 p.m.
12:15 a.m.	12:20 a.m.	12:30 a.m.	12:50 a.m.

Monday and Saturday Only—DIRECT SERVICE  
through to PRINCE RUPERT from PORT EDWARD

Leave Port Edward	Arrive Prince Rupert
12:30 p.m.	1:00 p.m.
1:00 p.m.	1:30 p.m.
2:30 p.m.	3:00 p.m.

DAILY EXCEPT SUNDAY:

Leave Prince Rupert	Arrive Port Edward
12:00 Midnight	1:00 a.m.

SUNDAY ONLY:

Leave Prince Rupert (Direct from Midnight Show) to Port Edward 2:30 a.m.

Issued by

C.W. Dixon  
Arrow Bus Lines Ltd.  
Prince Rupert, B.C.

Subject to the consent of the Public Utilities Commission. Any objection to this tariff schedule may be filed with the Superintendent of Motor Carriers, Public Utilities Commission, Vancouver, B.C., within (14) fourteen days from its date of issue.

8 Prince Rupert Daily News  
Monday, July 13, 1953

## Wallace's Dept. Store When You Want The Best — SWEATERS

Avon Glenayr  
Jantzen Monarch  
Lansea Tish-U-Knit

The best at Wallace's isn't more expensive. Just your assurance of satisfaction.

**WALLACE'S  
DEPT. STORE**



## LINDSAY'S

CARTAGE AND STORAGE LTD.

Established 1910

MOVING . . . PACKING . . . CRATING  
SHIPPING . . . FORWARDING . . . STORAGE

Experienced handling Local, Nation-wide and World-wide Shipments.

"MOVE WITH EASE . . . SHIP VIA LINDSAY'S"

Agents—Allied Van Lines Ltd.

Phone 60 or 62

Cor. 2nd and Park Ave.

## ★ SCREEN FLASHES ★

Elizabeth Taylor, who proved herself a consummate dramatic actress in "A Place in the Sun" and the more recent "Ivanhoe," now tops both these earlier performances with her dynamic role in M-G-M's "The Girl Who Had Everything," in which she co-stars on the Totem Theatre screen with Fernando Lamas and William Powell.

In this emotionally taut romantic drama she is seen as Jean, the beautiful and spirited daughter of the famous criminal lawyer, Steve Latimer (William Powell), who has brought her up to believe that she can do whatever she wishes so long as she is willing to pay the cost. This liberal and modern code backfires on the father when Jean becomes infatuated with Victor Ramondi (Fernando Lamas), a notorious racketeer with a tough and disreputable past. Breaking off

her engagement to Vance Court (Gig Young), a man of her own class, and disregarding the pleas of her father, Jean runs away with Ramondi with the intention of marrying him. It is now that the father is desperately driven to a measure that will save his daughter's happiness—an act that costs the racketeer his life, but not before Jean's eyes have been opened to the coarseness and brutality of the man who had swept her off her feet.

The casting of Miss Taylor and the romantically electric screen newcomer, Fernando Lamas, as the principal protagonists of "The Girl Who Had Everything" was an inspired one.

Chimpanzees, regarded as the smartest of the apes, can master simple arithmetic.

## A. A. A.

The Automobile Association (AAA) offers attractive benefits to motorists.

COME IN AND TALK IT OVER

Local Agent—PHIL LINZEY

Prince Rupert Realty Co.

345 Third Avenue

Phone 301

# 5 MEN MAKE 5 MISTAKES

ONE MAN struck a match to see if the gasoline tank in his car was empty . . .

IT WASN'T

ONE MAN patted a strange bulldog on the head to see if it was affectionate . . .

IT WASN'T

ONE MAN speeded up to see if he could beat the train to the crossing . . .

HE COULDN'T

ONE MAN touched an electric wire to see if it was charged . . .

IT WAS

ONE MAN cut out his advertising to see if he could save money . . .

HE COULDN'T