

Ships and Waterfront

The freighter Agathi, Capt. Kilas, arrived in port at noon yesterday to load barley for Japan.

Under Panamanian registry, the 4293-ton ship was built in Vancouver during World War II as a Liberty ship. She carries a crew of 34. Her sister ship, the Constantine, is due to arrive in port May 23 to take on another load of barley for Japan.

It is expected the ship will be here four or five days to load the 5500-ton cargo.

Better Without The Hound

BEAVER, Pa. (AP)—Helping trail an escaped prisoner proved costly to a special deputy sheriff. He lost his \$750 bloodhound.

Robert Grim brought his prize dog to join in the hunt for Fred Emery. While Grim searched, the dog disappeared. Meanwhile, the lone policeman captured Jimmy several blocks from the jail.

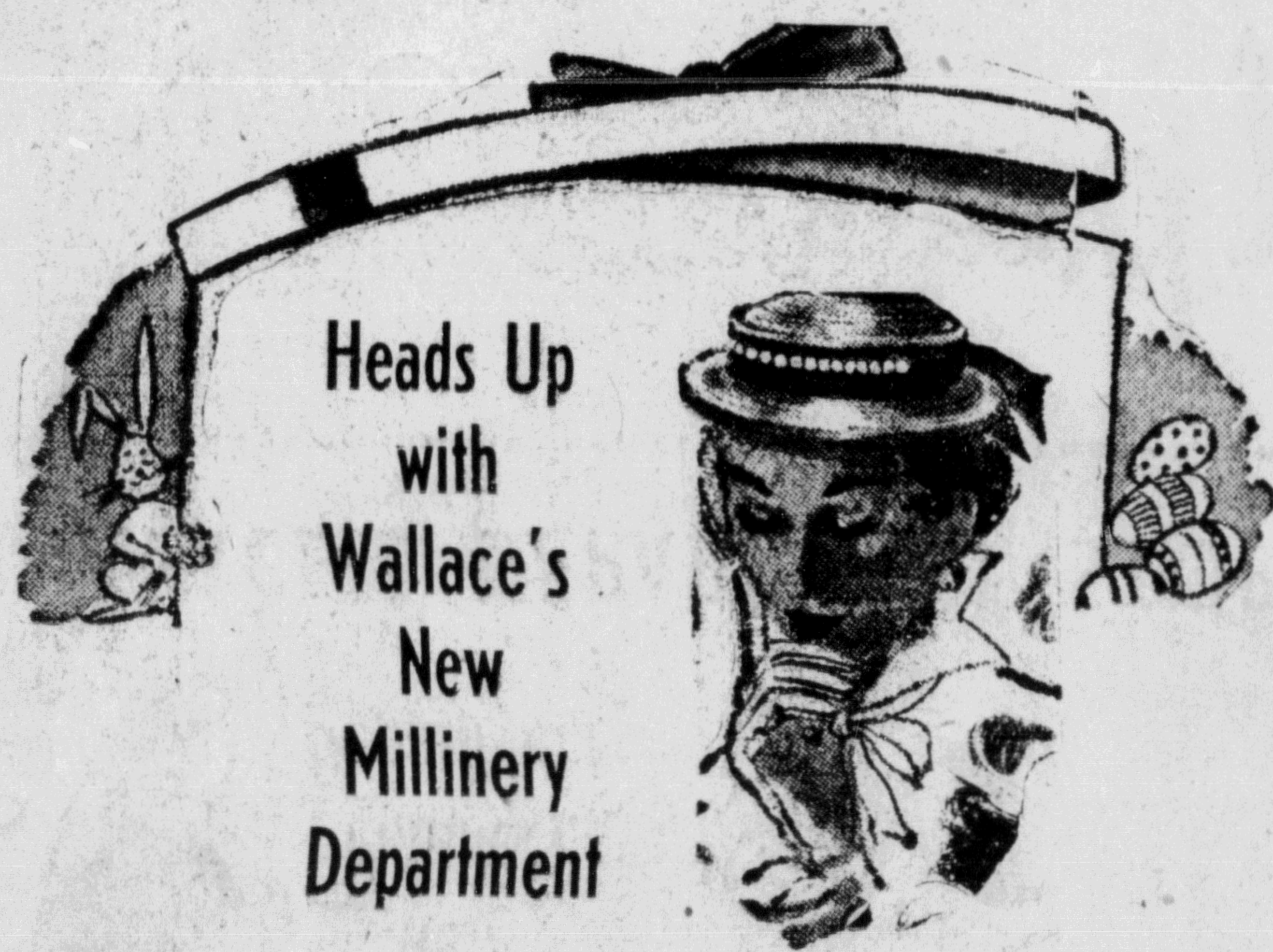
—PHONE 210—

For that New RANGE, REFRIGERATOR
WASHER or SMALL APPLIANCE

G. E. KETTLE
NOW \$14.50

Northern B.C. Power Co. Ltd.

Besner Block — Phone 210
Prince Rupert, B.C. Stewart, B.C.



Heads Up
with
Wallace's
New
Millinery
Department

WALLACE'S DEPARTMENT STORE

What Percentage of Total Sales Should Be Spent On Advertising?

Here are figures... compiled by the Bureau of Business
Research, Harvard University, for Retailers:

| Line of Business | Percentage |
|-------------------------------------|------------|
| Auto, Accessories, Service Stations | 2.6 |
| Electrical | 1.2 |
| Florists | 5.0 |
| Drug Stores | 2.5 |
| Grocery Stores | 1.5 |
| Jewelry | 3.9 |
| Men's Clothing | 3.8 |
| Shoe Stores | 3.7 |
| Department Stores | 4.3 |
| Hardware | 1.4 |
| Beauty Shops | 5.3 |
| Cleaners | 3.5 |
| Luxury Class (gifts, etc.) | 8.7 |
| Women's Apparel | 3.9 |
| Furniture Stores | 7.0 |
| Building Materials | 1.0 |

THE DAILY NEWS

Fine Mission Boat Sails

VANCOUVER (CP)—Fourteen evangelists who never take up a collection are sailing up the British Columbia coast on a preaching mission.

They are aboard the Lower Lights, luxuriously appointed vessel equipped with everything from electric plumbing to plush carpets in the lounge, but which has no games, playing cards or a radio.

The captain, the Apostle of the Apostles, Rev. Robert Crawford, says every year from the Columbia River in Oregon to Alaska Panhandle, the crew are an instrumental trio, a vocal quartet, a radio technician and a handyman.

The captain is also known as the Apostle of the World, a title inherited from his mother who started the church 46 years ago in Portland.

Rev. Crawford is pretty much like the old-style Methodist minister. "Somebody doesn't have time to stop and listen to a sermon. So we play music and preach through loudspeakers as we sail past."

WE DON'T EVEN PASS THE COLLECTION PLATE. Once a church in Prince Rupert took up a collection for us, but we turned it back to the minister. Money is not raised from voluntary donations and tithing of salaries of church followers."

THE DAILY NEWS' string results.

YOUR GARDEN

Gardens Are Possible Under All Conditions

By GORDON LINDSAY SMITH

There is one nice thing about gardening. No matter what sort of a spot we have there are some things that will grow. In this business one hears much of fine, rich loam and sunshine, and while these conditions may be ideal for a lot of plants, there are others that actually prefer a location far from favorable.

In poor dusty soil, for instance, there are hardy flowers like portulaca, alyssum, zinnias and many more that will make a good showing. Then the dark corners near walls or under fairly dense shade are ideal places for begonias and pansies that shrink away from the bright sun. Even soggy corners have their favorites and poor windswept rocky slopes. Rugged climates, too, are no handicap. Indeed in some northern gardens are grown the very finest of vegetables and the brightest of flowers. Away up or rather down on the northern tundras in the summer time the ground is aflame with bright bloom. In any good Canadian seed catalogue will be listed flowers and vegetables that will thrive in unusual places and it will pay to study these special likes if we are to do the best with unusual locations.

TIMELY HINTS

Experienced gardeners have all sorts of little tricks that will add to the interest and satisfaction of gardening. One of the oldest is to soak seed before planting. This applies especially to vegetable seeds like peas, beans, beets and lettuce. By soaking for a very few hours just before planting, germination is hastened and several days are saved. With the earliest potatoes, sometimes it is a good thing to allow a few of the tubers to sprout in warm sunshine in a window or warm room. Then we plant very carefully with the sprouts undamaged and pointing upwards. With cat-

rots and beets it will help to prepare the rows with special care, digging out the poor or hard soil to a depth of six inches or a foot and filling with rich soil with plenty of humus and manure. In such the seeds will germinate quickly and the young vegetables grow without being crowded. Because this special soil is very open there will be less need for thinning and the roots will grow straight. With melons, cucumbers and squash we usually sow in specially rich hills with some old rotten manure if we can find it. We may also cover for a few weeks with glass or some of the special paper caps to protect from late frost or cool nights. With all bedding plants, it is a good plan to pinch back after transplanting and especially to remove any flowers or buds. This pinching encourages stouter and healthier growth and in the end we get much harder and bigger blooms.

WATERING

In watering it is well to remember that one thorough soaking in dry weather is worth a dozen sprinklings. This rule applies to lawns too. A light sprinkling that only lays the dust encourages the roots to come near the surface where the hot sun will injure them. Deep soaking on the other hand encourages the roots to go down where they will be safe from the heat near the surface and where they will also find more plant food. In a great many cases where there are trees nearby light sprinkling also brings the roots of the trees close to the surface where they will ruin both the grass and the lawn mower. With lawns incidentally it is advisable either to use a very fine mist of water or else remove the nozzle altogether and really soak.

On the market are certain hormone sprays, which will make things like tomatoes, cucumbers, melons, etc., fruit faster and earlier, and also very substantially reduce the number of seeds. So often in our climate the first blooms fail to set fruit or do so only in a limited way. That's where these special sprays come in handy but they must be used exactly and according to directions. They are fine for some plants but deadly to others.

The word sheriff developed from the historic shire-reeves of ancient England, which also had port Reeves and town Reeves.

Including public and private-operated hospitals, Canada has 66 institutions for treatment of mental disease.

Popular Steamer Prince Rupert

SAILS FOR

Vancouver

and Intermediate Ports

Each Thursday

at 11:15 p.m.

For KETCHIKAN
WEDNESDAY MIDNIGHT
Comfort and Service

For Reservations
Write or Call
CITY OR DEPOT
OFFICE
PRINCE RUPERT
B.C.

CANADIAN NATIONAL



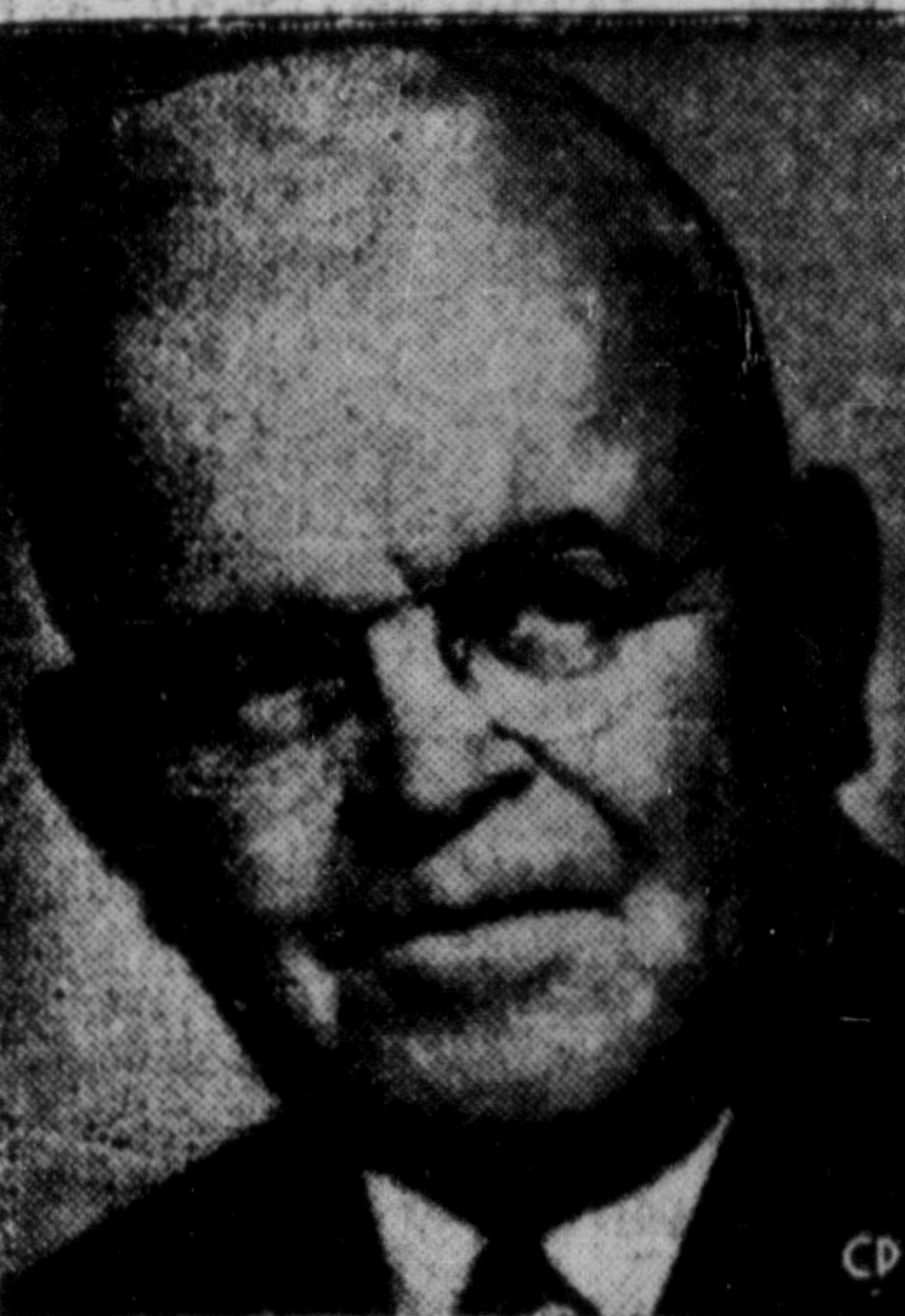
you can Count
on
Rock Mount
Distinguished by their
quality



Peak of Perfection

FINE PRODUCTS OF
ALBERTA DISTILLERS, LIMITED

This advertisement is not published or displayed by the Liquor Control Board or by the Government of British Columbia.



HEADS PUBLISHERS — Allan Holmes, publisher of the Galt Reporter, has been elected president of the Canadian Daily Newspapers Association. He succeeds E. C. Whitehead, publisher of the Blandin Sun. Mr. Holmes was born in Georgetown, Ont., and started his newspaper career as a reporter on the former Winnipeg Telegram. He also had been associated with the Prince Albert Herald, the Sarnia Observer, the Woodstock Sentinel-Review and the Welland-Port Colborne Tribune. He is president of the Moose Jaw Times-Herald Ltd., and the Prince Albert Publishers Ltd. (CP PHOTO)

Today's Stocks

(Courtesy J. D. Johnston Co. Ltd.)

| VANCOUVER | |
|-------------------|----------|
| American Standard | 21 |
| Bralorne | 6.25 |
| B.F.X. | 0.03 1/2 |
| Cariboo Quartz | 1.40 |
| Congress | 0.06 |
| Cronin Babine | 41 |
| Giant Mascot | 96 |
| Indian Mines | 16 |
| Pend Oreille | 6.25 |
| Premier Border | 25 |
| Privateer | 0.08 |
| Reno | 0.06 1/2 |
| Sheep Creek | 1.54 |
| Silbak Premier | 53 |
| Vananda | 14 1/2 |
| Salmon Gold | 0.03 1/2 |
| Spud Valley | 0.07 1/2 |
| Silver Standard | 2.40 |
| Western Uranium | 4.00 |
| TORONTO | |
| Athlona | 12 |
| Aumaque | 19 |
| Bevoort | 1.18 |
| Consol. Smelters | 32.65 |
| Conwest | 4.75 |
| Donalds | 42 |
| Eldona | 22 |
| East Sullivan | 7.75 |
| Giant Yellowknife | 9.90 |
| God's Lake | 42 |
| Hardrock | 13 |
| Harricana | 11 |
| Heva | 13 |
| Duvel | 97 |
| Joliet Quebec | 47 1/4 |
| Little Long Lac | 71 |
| Lynx | 14 |
| Madsen Red Lake | 1.85 |
| McKenzie Red Lake | 43 |
| McLeod Cockshutt | 2.90 |
| Moneta | 423 1/2 |
| Negus | 62 |
| Noranda | 77.75 |
| Louiseville | 28 |
| Pickle Crow | 1.68 |
| Petrol Oil & Gas | 1.32 |
| Senator Rouyn | 20 |
| Sheriff Gordon | 4.20 |
| Steep Rock | 6.95 |
| Silver Miller | 1.91 |
| Upper Canada | 1.80 |
| Golden Manitou | 6.05 |

NEW LIFE FOR YOUR FURS



Assured Protection

Safeguard your precious furs in the only scientific FUR VAULT in northern British Columbia.

WHILE IN STORAGE HAVE THEM

- Repaired
- Remodelled
- Cleaned and Glazed

For pick-up service

Phone 974

BILL SCUBY
FURS

302 Third Avenue
Prince Rupert, B.C.

WRONG ANSWER
LONDON (CP)—Rev. G. F. Miller, a Baptist army chaplain, said many young people today are guilty of "abysmal ignorance." He cited one young man who was asked the meaning of Good Friday and who replied "Good Friday was a sect of man to Robinson Crusoe."

TODAY ONLY
"KON TIKI"—Showing at 7:15 - 9:40
"ROAD BLOCK"—Showing at 8:30 Only

Starting TOMORROW
ONE OF THE ALL-TIME "GREATS"
Ever-new joy for all to enjoy...
laughs, romance and songs...
gay with the frantic pranks of
Dopey and his pals!



Walt Disney
Snow White
and the
Seven Dwarfs
color by
TECHNICOLOR
Ever-new SONGS
you'll sing again:
"Whistle While You Work," "Heigh-ho,"
"Some Day My Prince Will Come."

Capitol
A FAMOUS PLAYERS THEATRE
SHOWS 7 - 9:09
NOTICE TO MOTHERS
WITH PRE-SCHOOL CHILDREN
MATINEE FRIDAY at 2:00

THE INTERNATIONAL CINEMA GUILD OF CANADA PRESENTS
Curtain at 8:30
One Complete Show Thursday at 8:30
Doors Open at 8:00 p.m.
"The CHILTERN HUNDREDS"
AS A MOVIE, IT'S EVEN
FUNNIER THAN THE STAGE
HIT THAT PANICKED
LONDON AND NEW YORK!

Extra...
OPERA SCHOOL with DAVID TOMLINSON • LANA MOORE
TOTEM
A FAMOUS PLAYERS THEATRE
TODAY 7 - 9:05 — "WAKE OF THE RED WITCH"

IT'S SPRING
Time to
Give Your
Home a Lift
with MODERN FURNITURE from
Gordon & Anderson
Phone 46

Enjoy a Better
USED CAR
2-1951 A40 AUSTIN SEDANS
1-1950 A40 AUSTIN SEDAN
1-1948 INTERNATIONAL PICK-UP
1-1937 FORD SEDAN
1-1941 3/4-TON INTERNATIONAL PANEL
1-1950 STUDEBAKER SEDAN
Superior Auto Service
Limited
Third Avenue West
Phone Green 2

ADVERTISING IN THE DAILY NEWS BRINGS RESULTS