

WALLACE'S DEPT. STORE
PRICES SLASHED
Expansion Sale
Now in Progress
Storewide at
WALLACE'S of Course

JOHN H
BULGER
Optometrist
John Bulger Ltd.
Third Avenue

SHIPS AND WATERFRONT

With a list of passengers consisting of workmen for Kemano and Kitimat, CPR steamer Princess Norah sailed at 11 p.m. last night on her return to Vancouver and waypoints. The vessel, arriving here at 10 a.m. yesterday morning, brought two passengers here from Vancouver, 14 from Kitimat and 14 from Kemano. In command of the Princess Norah now is Capt. L. W. Macdonald, well known on the west coast of Vancouver Island run.

OUR KNOW-HOW SAVES YOUR MONEY
WILFORD
ELECTRICAL WORKS
Motors and Generators
Rewound and Repaired
MOTORS
BOUGHT AND SOLD
New and Rebuilt
Generators
6 - 12 - 32 volts
Box 1367 Ph. Blue 391

French Grain Ship Coming

A French freighter, Jean L.D., is due to arrive here Wednesday afternoon to load wheat. Local agents said today the ship was enroute here from Japan. Little further information was held. She is already lined.

Under Anglo-Canadian agency of Vancouver, the French diesel "may have been diverted," said the office of G. W. Nickerson, local agents. It is expected she will load for Japan. Some fuel may be taken on here.

Meanwhile, other reports are that a second ship, a British "cruiser," is due here soon from Japan and will need 1,000 tons of coal before proceeding to load grain.

FINE PANNELLING
BLACK AND N.Z. (Reuter's)—Beautifully grained panels of rimu wood, totalling 1,500 square feet of timber, will be sent to the United States soon to adorn the main lobby of the United Nations general assembly building in New York. Eighteen men worked six months to produce the panels from selected heart timber.

FOR HIGH CLASS PRINTING IN 1952 As Always
PLACE ORDERS NOW
Dibb Printing Co.

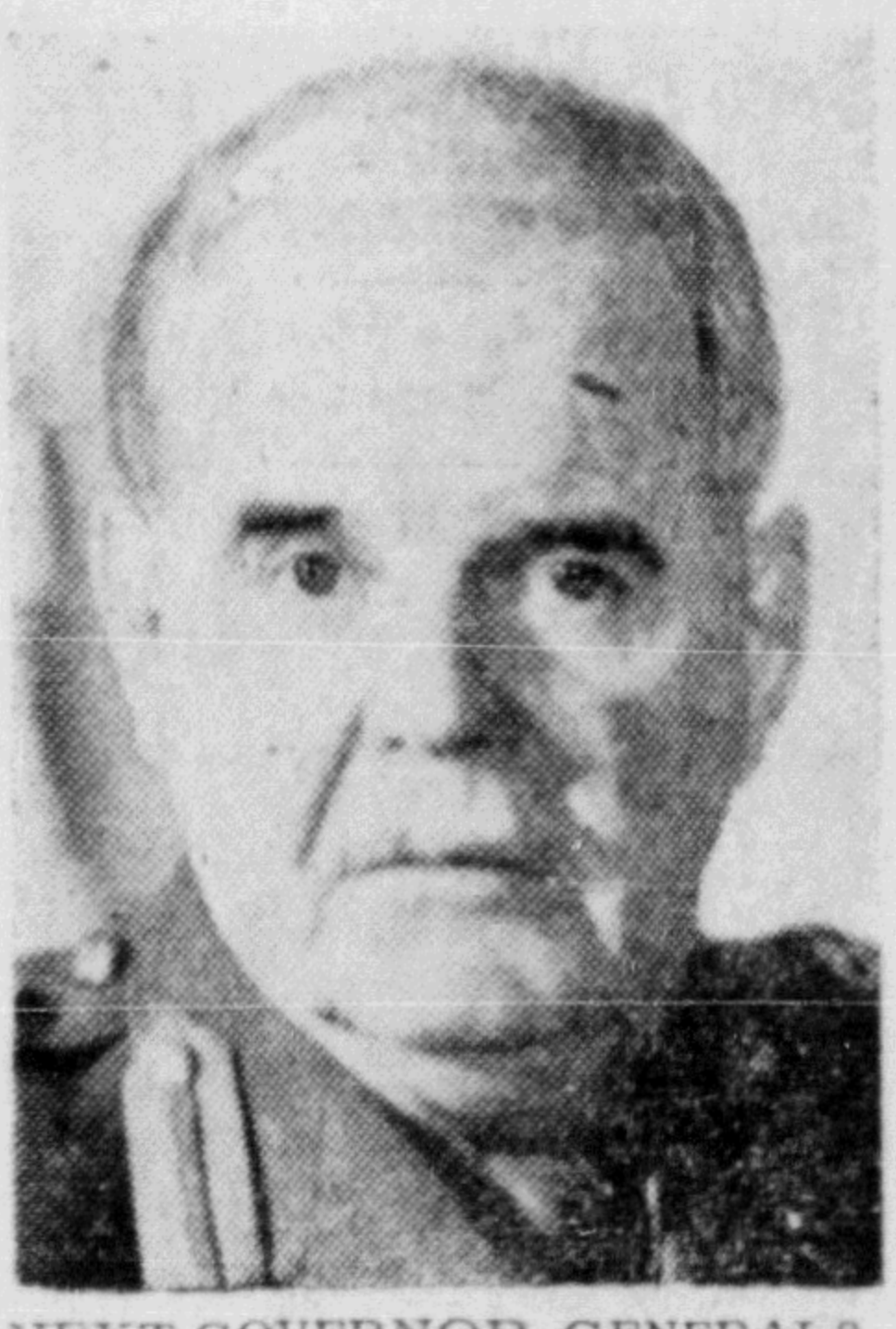
it's COOL
KEEP WARM ELECTRICALLY
"ELECTRIC HEATERS"
600 watt radiant 5.75
1000 watt radiant 7.75
1000 watt radiant 10.75
1100 watt radiant 16.20
G.E. Fan-type 19.50
Log Fireplace—1200 watts 40.55
Northern B.C. Power Co.
Besner Blk. Ph. 210
Prince Rupert, B.C.
Stewart, B.C.

STEAMER
Prince George
SAILS FOR
Vancouver
and Intermediate Ports
Each Thursday at 11:15 p.m.
For KETCHIKAN
WEDNESDAY MIDNIGHT
Luxury at Low Cost
For Reservations
Write or Call
CITY OR DEPOT OFFICE
PRINCE RUPERT, B.C.
CANADIAN NATIONAL

UNION STEAMSHIPS
VANCOUVER—VICTORIA
Chilcoot 8 p.m.
January 20
Chilcoot midnight
January 13 and 27
Camosun
Tuesday, 12 Noon
ALICE ARM, STEWART AND PORT SIMPSON
Sunday, Camosun, 11 p.m.
FOR NORTH QUEEN
CHARLOTTE ISLANDS
January 18
ss. Chilcoot midnight
FOR SOUTH QUEEN
CHARLOTTE ISLANDS
ss. Chilcoot
January 11 and 25
FRANK J. SKINNER
Prince Rupert Agent
Third Avenue Phone 568



TO TOUR ENGLAND—These Stony tribe Indians from Banff, Alta. have been engaged to portray their way of life in a tour of England with Billy Smart's circus. While there, they will live in teepees and wear beaded costumes. Shown passing through Calgary on their way to England are, back row, left to right; Jerry Campbell, Eli Rider and Handsome Bearspaw; second row: Mrs. Rider, Rosie Bearspaw and Mrs. Bearspaw; front row: Diana Rider and Art Bearspaw. (CP PHOTO)



NEXT GOVERNOR-GENERAL?
—Hon. W. C. Woodward, prominent Vancouver merchant, has been mentioned in speculation as to who will succeed Viscount Alexander as governor-general of Canada. Mr. Woodward was lieutenant-governor of British Columbia from 1941 to 1946. (CP PHOTO)

Snow Clearing Headway Made

Snow fighting equipment, borrowed and chartered, swung into action on Third Avenue last night and has been making a good showing under the direction of city public works department.

By morning the high centre piles between Sixth and Fourth streets had been cleared away and during the morning the block between Fourth and Third Streets was cleared.

A Columbia Cellulose loader and chartered trucks are being used.

Mayor Whalen had no figures as to the cost of this unexpected strain on the civic budget but admitted that it was costing "plenty."

Carried \$5000 In Cash, Dies

VANCOUVER.—An elderly unidentified man, carrying \$5000 in cash, died on his way to hospital here yesterday after having been stricken with a heart attack in a drug store.

BRIEFS—

HITCH-HIKING BOOM
PALMERSTON, Ont. (CP)—Recent heavy snowfalls were welcomed by youngsters who have been getting many rides on farmers' sleds. With side roads blocked to motor traffic, farmers have been giving the children free trips to and from the town outskirts.

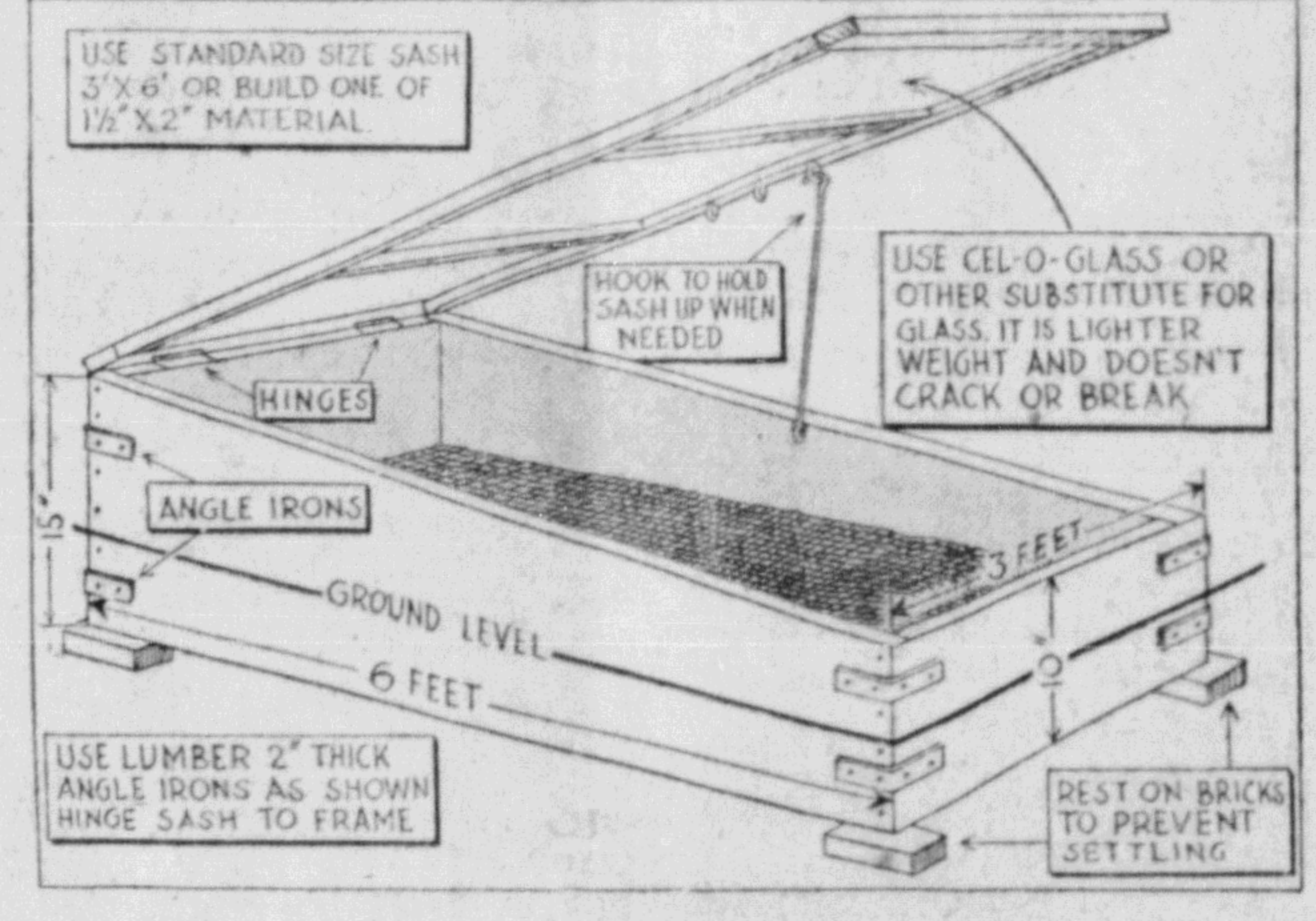
PRESERVES TREES
MONTREAL (CP)—Organization of a new section of the civic parks and playgrounds division, in charge of trees, is proceeding rapidly. The division will be responsible for growing trees at the city nursery and for their planting and upkeep in streets and parks.

GREAT AGE
TRENTON, Ont. (CP)—Mrs. Jane Mitchell quietly celebrated her 105th birthday recently at the home of her son in Preston Hill. Still mentally alert, she loves to relate tales of the pioneering days. She has three sons, 14 grandchildren and several great-grandchildren.

PIONEER METHOD
Cannons made out of strong leather were used by the New England pilgrims to defend themselves against early Indian raids.

Gardening....

ANCIENT COLD FRAME STILL BEST HOME GARDEN HELPER



Working Drawing for Building Cold Frame.

The most valuable 18 square feet in any garden area is that which is covered with a cold frame. And the smaller the garden, the more rewarding will be this ancient device.

It began as a pit, some thousands of years ago. Today it is an enclosure, partly below ground, with a protective covering which admits daylight. Glass is rapidly being supplanted by various substitutes, which are lighter, and unbreakable.

A cold frame is useful the year around. There is no way you can use the few square feet of garden space required for it to better advantage.

Anyone who can drive a nail and operate a saw can build a cold frame. The boards can be cut this winter in the basement or garage, and put together in a short time as soon as possible to go outdoors.

Since inexpensive electric heat will turn a cold frame into a hotbed, the older manure-heated hotbed is seldom seen. Heat is not needed for most of the uses to which a cold frame can be put, and being without objectionable dirt or odor, it can be placed near the house, where steps will be saved.

A location in the full sun, all day is required for best results and shelter from cold winds is beneficial.

The sash should incline toward the south. Heavy boards of cypress, white pine or redwood are preferable, since the frame will often be wet and must resist decay.

The illustration is a practical working drawing of a standard one-sash cold frame. Standard glazed sash is 3 by 6 feet, but a frame can be made of any convenient dimensions, if sash of a suitable size is available. Sash covered with transparent plastic materials will be much lighter than glazed sash, and also will allow ultra-violet rays to pass through to the plants.

The usual practice is to sink the frame into the ground about six inches, and to pile earth around it outside, for insulation. Inside it may be filled to ground level with the best top soil available, or the floor may be covered with two or three inches of cinders or gravel, on which shallow seed boxes (flats) are placed. Many prefer sowing the seeds in flats, which can be carried to the garden at transplanting time.

ASPIRIN
RELIEVES
PAIN AND DISCOMFORT OF
COLDS
FEEL BETTER FAST!

Miners Tell Their Side in Kemano Case

"Strike-breakers" imported to Kemano Bay Alcan tunnel project following illegal walk-out of 300 men "will not go into the tunnels," said two men here today representing the striking miners.

Don McLeod and Ray DeCosse, appointed by disgruntled tunnel workers to head an "action committee," told a Daily News reporter they had been assured by telephone that all of the 131 imported men scheduled to arrive today at Kemano Bay had signed a declaration they would not enter the tunnels as members of the Hod Carriers and Laborers' Union.

"Most of the strike-breakers are miners from eastern mines and in sympathy with our stand. We have declared the tunnels 'hot' and they have telephoned me they won't enter them," said McLeod.

McLeod vigorously denied that the illegal walk-out was an "argument of jurisdiction" between two unions, as alleged by Morrison-Knudsen Company spokesmen.

STRICTLY WAGES
"It is strictly a matter of wage demands."

McLeod admitted support had been sought by the Mine, Mill and Smelter Union (Ind.) but not to "have that union bargain for us."

"About 70 per cent of the tunnel workers were miners. We had always belonged to the mine and mill union. When we could get no support from the AFL union we asked the mine union to support our demands for a separate charter."

Tunnel workers are paid \$1.60 an hour. The certified bargaining union is the Hod Carriers and Laborers of America (AFL). McLeod and DeCosse stated that five months ago the men had sought negotiations for higher wages.

Basic rate was the same "or similar" as received in most base metal mines of the province but without the bonus.

Most mines paid an average of \$6 a day in bonuses to miners, they said.

"We were among the lowest paid workers on the whole job." When negotiations with the company for higher wages were not considered by the company, the tunnel men applied for a

FREE Delivery!
BOTTLED BEER
Phone 654
25c per dozen paid for empties. Please have them ready when the driver calls.
This advertisement is not published or displayed by the Liquor Control Board or by the Government of British Columbia.

Shipping and General Moving, Packing, Crating, Cartage and Storage
Complete, Reliable and Efficient Service. Also agents for Canadian Liquid Air Co. Ltd. for Oxygen, Acetylene and all welding supplies.
LINDSAY'S CARTAGE & STORAGE LIMITED
Cor. 2nd and Park Avenues
EST. 1910 Phone 69 and 68

— DISHES —
We have the largest stock of dishes in Northern B.C.
DINNER SETS
BREAKFAST SETS CUPS and SAUCERS
Especially good selection of
TEAPOTS and WHITE KITCHENWARE
Gordon & Anderson
Phone 46 Limited

separate charter affiliated with AFL for tunnel and underground workers.

Meeting Hod Carriers and Laborers' international representative William James, McLeod and DeCosse said they "were assured" that such a charter would be forthcoming. James, they said, was given \$6 from each of 20 prospective charter members.

Later a letter received from Robert Sheets, vice-president of Hod Carriers and Laborers, stated "no charter, now or at anytime" would be forthcoming, they said.

"That was our last hope. We couldn't get a voice to negotiate with the operators so we formed an action committee and decided to walk out by popular vote."

The men had decided on \$2.75 an hour as an "equitable" wage but this actually had never been officially received by the company, which had offered to increase miners' wages to \$1.75 an hour, but deduct 10 and 15 cents from other tunnel workers—helpers—who were also receiving \$1.60.

"We turned this down flat, naturally. The company was not only giving no more, but they would actually gain on such an arrangement," said McLeod.

Then the men had appealed to the Mine, Mill & Smelter Union, for support in their action, they said.

ONLY WANT VOICE
"But we certainly haven't asked that union to be our bargaining agency. All we want is a charter so we can have a voice. We don't care who gives it to us."

"Even though the walk-out was illegal, we think we still did right."

"If they try to hire any men from here as strike-breakers, we will picket the docks and the hiring halls. The same will be done in Vancouver or Burns Lake."

McLeod said there had never been any indication of violence.

"One Mountie kicked us out—we went peacefully, but we told the company that we wouldn't leave unless by legal action."

STARTING TOMORROW
Gayer than "Annie Get Your Gun"! More melody magic than "Caruso"! Richer in romance than "Show Boat"!
— An American in Paris —
TO THE MUSIC OF GEORGE GERSHWIN
STARRING
GENE KELLY
AND INTRODUCING
LESLIE CARON
— OSCAR LEVANT — GEORGES NINA FUCHS
Technicolor
Hear! "Embraceable You" "By Your Side" "I Got Rhythm" and other Gershwin hits!

Evening Shows 7 - 9:05 p.m.
Matinee Sat. 2 p.m.

ONLY TWO WOMEN KNEW WHY HE DISAPPEARED
JOSEPH BARBARA COTTEN-STANWYCK
"The Man With a Cloak"
LOUIS CALHERN - LESLIE CARON
CAPITOL
A FAMOUS PLAYERS THEATRE
On the Same Program
Sally Forrest
Lionel Barrymore
in
"Bannerline"
— NEWS —
Today to Wednesday
First Show 7:00 p.m.
Last Complete Show 8:30 p.m.

NOTICE OF CHANGE OF BUSINESS
On and after the first of February the PIONEER MARKET will be carrying on business under the name "RUSSELL'S." We are discontinuing our meat and produce line and we shall be open from 9:00 a.m. until 9:00 p.m. daily to serve you with fresh fruit, magazines, sundries, tobaccos, bakery products, etc.
At this time we wish to thank all our patrons for the privilege of serving you in the past and hope we can serve you in the future in our new line.
PIONEER FOOD MARKET
Russell Cameron

"American In Paris"
Brilliant Song and Spectacle Coming to Theatre This Week
Brilliant song and spectacle which has been a great crowd in the including Vancouver has been running for couple of weeks in the large downtown theatre American in Paris, at the Totem Theatre tomorrow night for a run.
It features George Kelly, who has stayed on in the new French action, Caron, now at the Capitol in "Man With a Cloak" its stars.
Sumptuously photographed, technical, "An American in Paris" is said to be the beauty, gaily, and of the French capital.
Kelly is a happy-go-lucky who has stayed on in the war to eke out a living but happy existence in the some day becoming a famous painter. Miss Caron French ballet dancer, playing Oscar Levant, Guetary and Nina Fuchs in the complicated accompany Kelly's great artistic career.
There is hardly a story when it is not singing or dancing. Number is a ballet, of different scenes, done in Gershwin's title piece, famous Gershwin music sung and danced.
BIG WIND
The term hurricane from the word huracan, early Portuguese name, describe Caribbean storm.
TOTE
A FAMOUS PLAYERS THEATRE