

Wallace's Dept. Store



Wallace's Infants' Wear Department

Enjoy shopping in a "city type" infants' wear department. Wallace's feature quality infants' wear at moderate price for guaranteed quality.

Diapers Raincoats  
Panties Blankets  
Sweaters Overalls  
Vests Headwear  
Gowns Rompers  
Shawls Kimonas

WALLACE'S DEPT. STORE

Extra Pants FREE  
with every Man's Suit—also  
Extra Skirt or Slacks FREE  
with every Woman's Suit

HOUSE OF HOBBERLIN  
"Made-To-Measure"

Top Quality Guaranteed Fit  
**LING THE TAILOR**  
220 Sixth Street Phone 649  
HUNDREDS OF PATTERNS TO CHOOSE FROM

**CITY TRANSFER**

LOCAL AND LONG DISTANCE  
FURNITURE MOVING

Phone 950

CRATING — PACKING — STORAGE  
First Avenue and McBride Street

For quick results try a Daily News Classified

BLACKWOOD on

Bridge

By EASLEY BLACKWOOD

Weird Bidding Matched  
By Equally Weird Play

The weird bidding of today's deal was matched by the play and the final result. Mr. Abel hesitates to bid no trump when Mr. Champion is his partner and so opened the bidding with one club. After Mrs. Keen's takeout double, Mr. Champion decided to try to foul up his opponents' bidding with a jump to four diamonds.

Mr. Muzzy was right in there brave as a lion, on his one king. He thought it would be very crafty to bid hearts first and then, if he got doubled, to run to spades. He got doubled and he ran. But into a blank wall. The opening lead was the ace of diamonds and Mr. Muzzy ruffed. He led a small trump. Mr. Abel played the eight and dummy's queen won. A spade was returned. Mr. Champion showed out, and Mr. Muzzy played small.

On winning with the nine, Mr. Abel led his last diamond, Mr. Muzzy ruffed again and led

South dealer  
Neither side vulnerable

North (Mr. Champion)

S-2

H-9-7

D-K J 9 8 6 5 3 2

C-3-4

South

West (Mrs. Keen)

S-Q 6 3

H-K Q J

D-Q 10 4

C-K Q J 2

East (Mr. Muzzy)

S-K 10 7 5 4

H-10 5 4 3 2

D-None

C-10 4 3

(Mr. Abel)

S-A J 9 8

H-A 8 6

D-A 7

C-A 7 6 5

The bidding:

South West North East

1 C Dbl. 4 D 4 H

Dbl. Pass Pass 4 S

Dbl. All pass

a heart. Mr. Abel went in with the ace and cashed the ace of spades, dropping Mr. Muzzy's lone king. But now he could win only two more tricks—his remaining trump and the ace of clubs. Down two.

Mr. Abel was not happy with this result. "We'd have done better if you'd gone on to five diamonds," he said to Mr. Champion. "We can make it easily."

"What an analysis, man!" replied Mr. Champion. "We'd have done better if you'd played cards. We can set him seven tricks."

Mr. Muzzy looked pleased. "I saved five tricks in the play, partner," he said brightly.

Mr. Champion sniffed disbelievingly. "It was the way you played it that gave Abel the chance to beat you seven tricks," he said.

Mr. Champion went on to say that when Mr. Abel won the third trick with the nine of spades he should have overcome the usual aversion to leading away from a tenace holding. That is, he should have cashed his ace of spades and led the jack.

Mr. Muzzy would have won with the king of spades (his last trump). But then Mr. Abel could have won the next trick, cashed his last ace and led the seven of diamonds. Mr. Champion would have won all the remaining tricks with his diamond suit.

Service Vote May Alter Results

OTTAWA (CP)—The armed services vote, tabulated this week-end, may bring some changes in the results of civilian voting in Monday's federal election.

On the basis of the civilian vote count election night, Liberals elected 171 members to the new Parliament, Progressive Conservatives 50, CCF 23, Social Credit 15, Independent Liberal two, Liberal-Labor one, and Independent three.

However, the civilian vote in at least 13 ridings was close enough to engender upsets, either from the armed services vote or possible recounts later. Men and women in uniform eligible to vote during the week-long service poll Aug. 3-8 totalled about 105,000 at home and abroad. An estimated 20,000 were eligible to vote in mailed polls abroad. Results are expected Monday.

IVE CENTRES  
Polls were open a minimum of three hours daily for service personnel. Their ballots were placed by them in envelopes and sealed, then enclosed inside another and mailed to returning officers at five centres.

A returning officer at Kure, Japan, opened and counted ballots received from Canadian troops in Japan, Korea and at sea in the Far East. London was the returning officer's headquarters for service voters in Britain and northwestern Europe.

Edmonton served as headquarters for the three prairie provinces, British Columbia, the Yukon and Northwest Territories. Ottawa handled the Ontario and Quebec votes and Halifax those of the four Atlantic provinces and some from vessels at sea.

The result of the service vote as counted by the five returning officers was wired to Nelson Castonguay, chief electoral officer, in Ottawa. The vote totals were added to the civilian counts reported election night. The overseas vote will be a bigger factor in this election than in 1949. That year only a handful of the 22,714 ballots

cast by the armed services came from the small numbers of Canadians serving abroad. Service voters eligible numbered about 50,000.

All Canadian citizens or British subjects serving in the Canadian forces were eligible to vote this year, including 16-year-old apprentices and some 8,000 war veterans in hospitals. The service vote has produced upsets in former general elections. In 1917, the men in uniform ousted 14 candidates elect-

ed by civilians and in 1945 late Prime Minister Mackenzie King was rejected in Prince Albert on the service vote.

For the first time in this election, deputy returning officers scattered through the country detachments at home and abroad were provided a list containing the accepted home address and constituency for service voter. The troops cleared before the election which constituency they vote.

ENDS TODAY CARY GRANT - DEBORAH KERR  
7: - 9: p.m. in "DREAM WIFE"

M-G-M presents Love, Laughs and  
**A SLIGHT CASE OF LARCENY**  
starring  
**MICKEY ROONEY**  
**EDDIE BRACKEN**  
**ELAINE STEWART**  
The "Bad And Beautiful" Girl!

Also  
**"CRY OF THE HUNTED"**  
with—  
Vittorio Gassman  
Polly Bergen  
Barry Sullivan

STARTS MONDAY  
"Larceny" 7:00  
"Cry" 8:15

**TOTEM**  
FAMOUS PLAYERS THEATRE

TODAY SUSAN HAYWARD - ROBERT MITCHELL  
6:50 - 9 in "WHITE WITCH DOCTOR"

Sunday Midnight Only  
DIANA DOUGLAS ON THE SAME  
in PROGRAM:  
**"STORM OVER TIBET"** "TWO MUGS FROM BROOKLYN"

Gallant Bess is back...WITH NEW THRILLS!  
Great in adventure...  
Greater in courage!  
**"Adventures of GALLANT BESS"**  
FILMED IN  
Glorious Cinecolor!  
AN EAGLE LION (Hollywood) RELEASE

ALSO  
**ALL THE TERRIFYING SAVAGERY OF THE FORBIDDEN JUNGLES!**  
**Black Shadows**  
STARTS MONDAY  
**CAPITOL**  
A FAMOUS PLAYERS THEATRE

TIMES:  
Gallant Bess ..... 7:00 - 9:35  
Black Shadows ..... 8:28

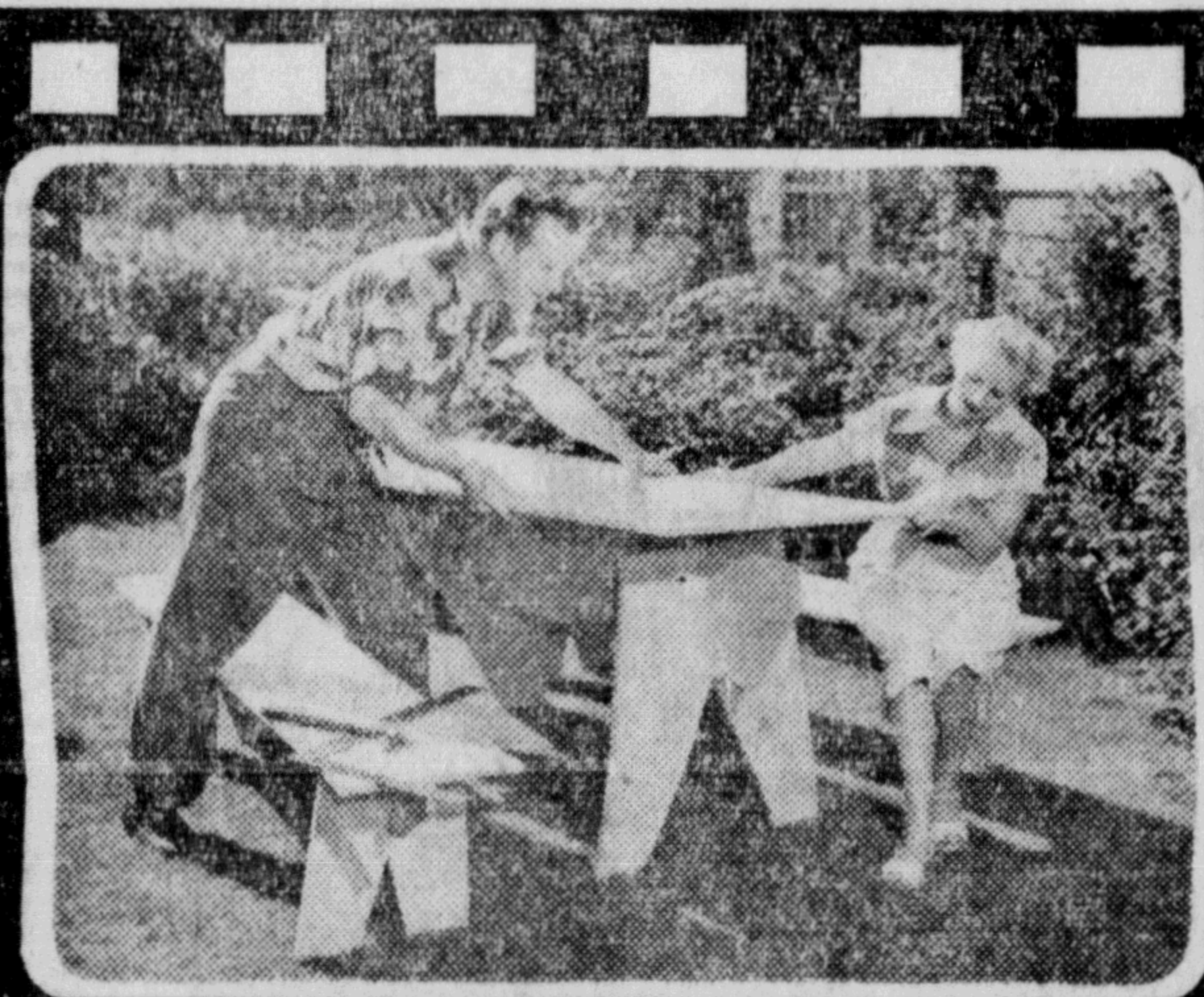
**TONIGHT**  
The Vancouver  
**DEATH DODGERS**  
7:30 P.M.  
**ROOSEVELT PARK**  
CHILLS! THRILLS! SPILLS!  
Admission  
**Adults \$1.00 Children 35¢**  
Sponsored by the KINSMEN CLUB

**Coming!!**  
**WILF CARTER**  
and his stars of  
STAGE - SCREEN - RADIO  
AT THE CIVIC CENTRE  
**AUGUST 17th**  
STAGE SHOW—8:00 p.m. Tickets \$1.00  
DANCE—10:30 p.m. Tickets \$1.00  
SPONSORED BY THE CANADIAN LEGION

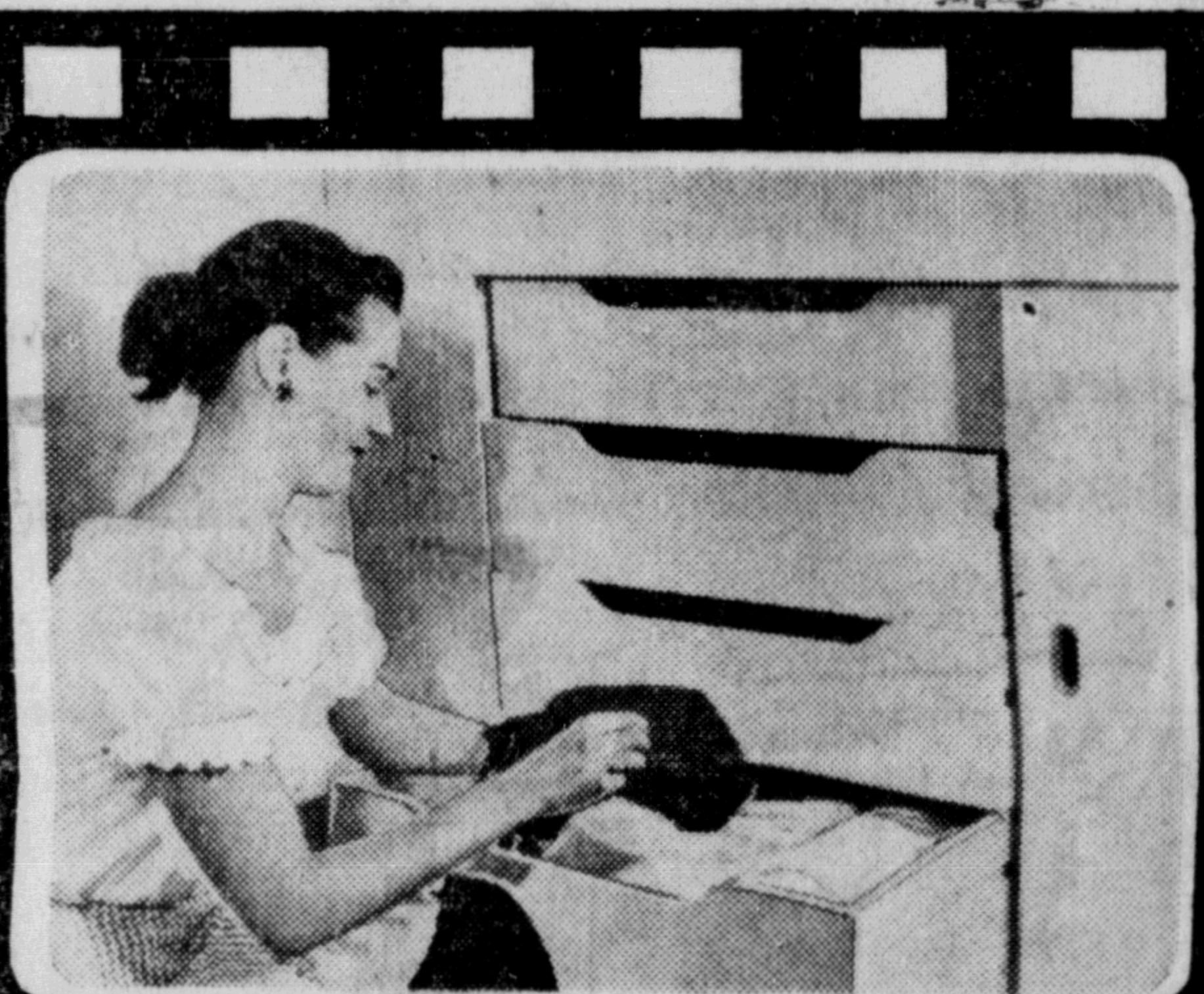
Look what you can do with

**SYLVAPLY DOUGLAS FIR PLYWOOD**

The great, new "Do-It-Yourself" movement is rolling along, stronger than ever! People who used to think they couldn't drive a nail straight have found this exciting and profitable spare-time occupation "right up their alley." It's easy to make so many things that help make a house a home—with Sylvaply.



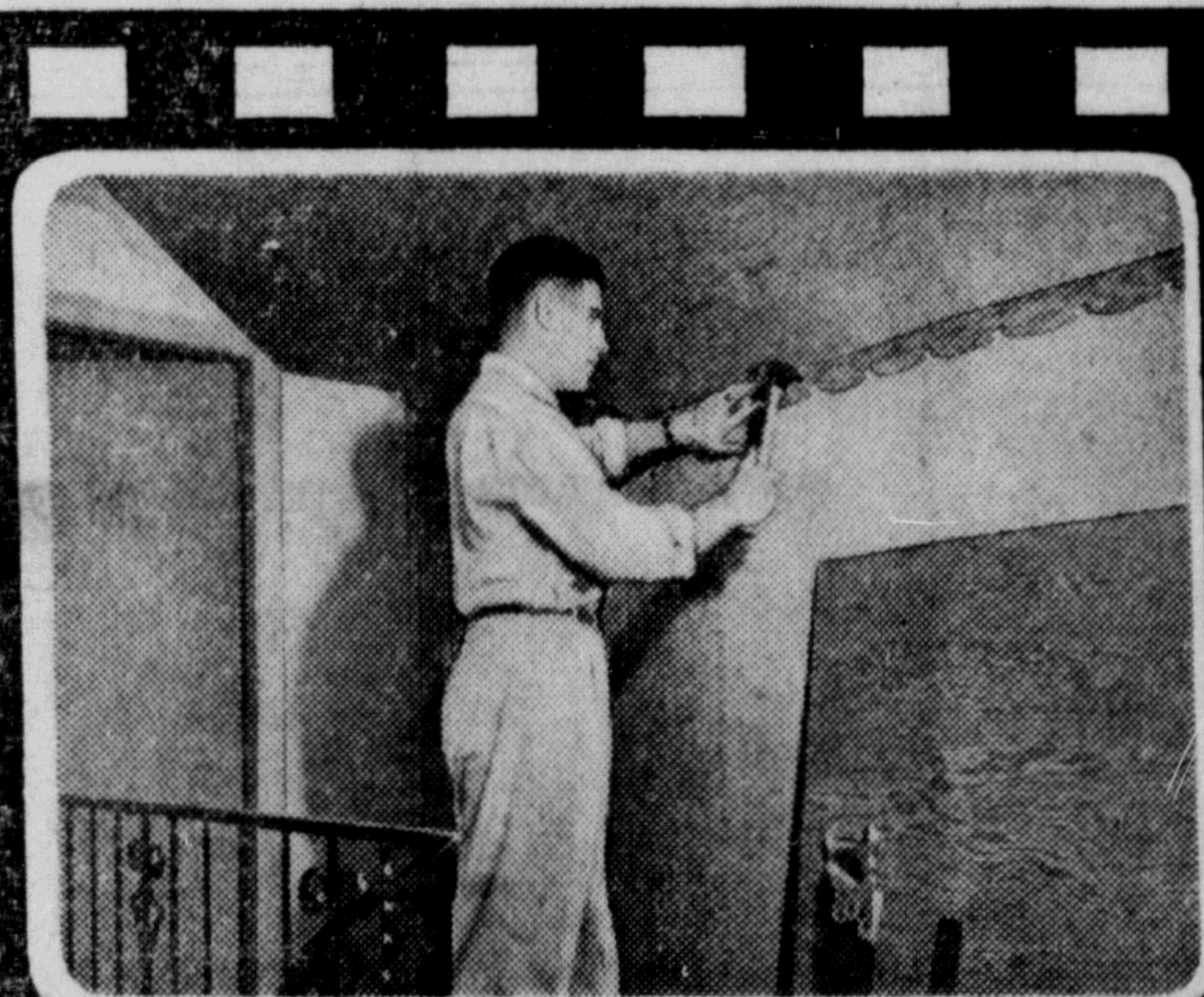
YOU'LL HAVE FUN making smart, outdoor furniture with durable, easily-worked Sylvaply. Free plan for this table and bench at your lumber dealer. Get it—and get started!



WHAT A BLESSING you'll find the extra storage space and convenience in a bank of built-in drawers like these. And, it's all yours when you make your own built-ins with Sylvaply.



YOU CAN TRANSFORM a dull basement into a dazzling guest room, rumpus room or a den—easily and inexpensively—by panelling with Sylvaply, so easy to handle, nail and saw, it's more fun than work. Get Free "How-To-Do-It's" from your Sylvaply dealer.



YOU CAN EASILY ENLARGE your home be it new or old, by simply turning waste attic space into valuable living space. You don't need to be an expert to use Sylvaply. Just follow the simple step-by-step instructions in the Sylvaply Free "How-To-Do-It's" your dealer has for you.



"Do-It-Yourself" with  
**SYLVAPLY**

Lightweight and strong, the big handy panels of Sylvaply Douglas Fir plywood are more fun than work for building, remodelling and making furniture. They're just right for the "week-end" carpenter using the simplest household tools.

It's FUN—only a few simple tools needed

All you need to work successfully with these easy-to-handle 4 feet by 8 feet panels of lightweight Sylvaply is just average skill in the use of ordinary household tools. Get started by talking over your project at "Handyman Headquarters"—your local Sylvaply dealer. (He has the new "Take Home" sizes, too—small Sylvaply panels handy for odd jobs.)

Serving Lumber Dealers from Coast to Coast  
**MacMILLAN & BLOEDEL LIMITED**  
Vancouver • Calgary • Edmonton • Winnipeg  
London • Windsor • Toronto • Montreal • Quebec City

Half Sovereign Sent to Fund

LONDON (CP)—A lucky half-sovereign, taken to Canada 42 years ago, has been delivered by hand to Westminster Abbey to support the £1,000,000 (\$2,800,000) abbey repair fund.

The token came from Mrs. J. A. Wilson, 80, of Winnipeg, who took the coin with her when she emigrated to Canada in 1911. It was taken to the abbey by her son, who has just returned from Canada.

**hallicrafters**  
RADIO  
Model 5R18  
CHOOSE YOUR COLOUR COMBINATION  
Here's an exclusive Hallicrafters colour feature. This mantel radio comes in six "decorator" colours with a contrasting interchangeable dial centre. You have a choice of 30 colour combinations. Famous Hallicrafters "Pulling-Power" through five tubes. Brightly polished brass escutcheon. Size 10 1/2" x 5 1/2" x 5 1/2". In Flame, Citron, Pebble, Birch White, Hot Chocolate and Spruce.  
**McRae Bros. Ltd.**  
The Store That Service Built!  
Phone 6 or 36