

Prince Rupert Shoreworkers UFAWU

Regular Monthly Meeting
Legion Auditorium

Thursday, October 15 - 8:00 p.m.

All Members Out This is Important



WALLACE'S
DEPARTMENT STORE

GIRLS'
FALL
COATS
For
Every
Age

Top quality at feature value-
giving prices. Wallace's have
done it again.

WALLACE'S
DEPT. STORE

All Departments Responsible For Training of English

VANCOUVER — Who is to blame for the chorus of complaints that many university students are inarticulate?

Dr. MacKenzie, president of the University of British Columbia, says complaints that Canadian university graduates cannot use their mother tongue either in writing or speech with adequate facility are "too widespread to be treated lightly." And he thinks at least part of the blame is a buck-passing attitude of some university departments.

In his annual report on UBC activities, Dr. MacKenzie says various faculties within the uni-

versity tend "to regard training in the use of language as the exclusive responsibility of the department of English."

MAJOR RESPONSIBILITY

Departments of English have the major responsibility for the study of English literature as a body of knowledge but should have no more responsibility than other departments for the study of English as the language of instruction.

"I would suggest that practice in writing should be more widely spread over all departments responsible for the instruction of first-year students so that instructors in all departments might come to regard both competence in knowledge and competence in the communication of knowledge as their particular responsibility to all students who sit under them."

"Until this responsibility is understood and accepted by every department, school and faculty, our universities will not be in a position to meet and answer the complaints—even though these are often exaggerated—of those who suffer from the inability of some of our graduates to communicate their special knowledge with facility."

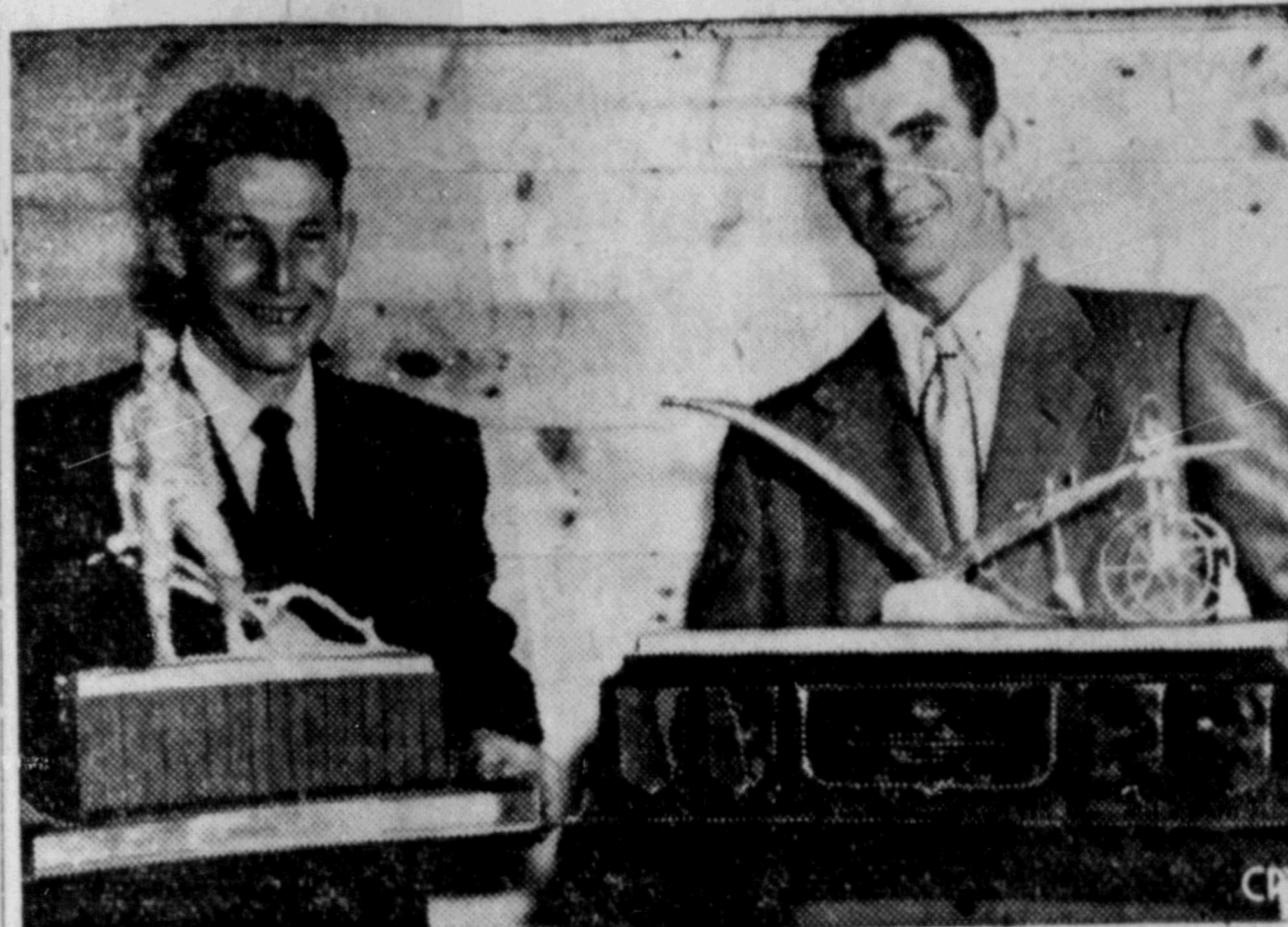
Wheat and flour were imported to Canada from France in 1751 and 1757, owing to poor harvests.



DINING
PLEASURE

in
SPARKLING NEW
SURROUNDINGS

Commodore Cafe



JIM ECCLES, 34, (right) of Brampton, Ont., was crowned the world's first plow champion at the 40th international plowing match at Cobourg, Ont. Canadian champion is Robert N. Timbers, 26, (left) of Stouffville, Ont.

BLACKWOOD on Bridge

By EASLEY BLACKWOOD

Some Fantastic Plays Made by the Experts

Truth is stranger than fiction. I mention this old saw because it fits so perfectly the series of columns starting today. I want to show you some bids and plays so fantastic you would not believe them unless I assured you, as I do, they were really played in actual tournaments.

All were played by Mr. Truex. Mr. Truex is a true expert—a real, live master who plays in and wins many tournaments every year. He has won international as well as national titles. He has written an excellent book on the game.

You would probably recognize his real name. He is a good friend of mine and to keep it that way I am identifying him simply as Mr. Truex.

See how he was fixed in today's hand by a simple overcall. What would you do with his cards if your partner opened the bidding first hand with a heart and second hand came in with a two-diamond bid? Hard to stay out of the auction, isn't it? Yet getting into the auction turned out to be murder.

Mr. Truex refused to be shut out by the overcall. Following the usually commendable practice of describing the nature of his hand, he made a series of bids which eventually landed his side in game. And note none of his bids could be passed. Each one forced Mrs. Keen to bid once more.

When the auction reached the three no trump stage, Mr. Dale doubled. His partner opened the jack of diamonds and he won with the ace and returned the nine, clearing the suit.

Mrs. Keen won the second diamond and led a club. Mr. Abel went in with the ace, cashed five diamond tricks and

South dealer
North-South vulnerable

North		East	
(Mr. Truex)		(Mr. Dale)	
S—A K 8 4	H—7 2	S—J 9 6 2	H—A 9 8 6 3
D—4 3	C—K J 9 8 3	D—A 9	C—7 5
West		South	
(Mr. Abel)		(Mrs. Keen)	
S—10 7	H—10	S—Q 5 3	H—K Q J 5 4
D—J 10 8 7 6 5 2	C—A Q 10	D—K Q	C—6 4 2

The bidding:
 1 H Pass 2 D Pass 3 NT Pass 4 H Pass 5 H Pass 6 H Pass 7 H Pass 8 H Pass 9 H Pass 10 H Pass 11 H Pass 12 H Pass 13 H Pass 14 H Pass 15 H Pass 16 H Pass 17 H Pass 18 H Pass 19 H Pass 20 H Pass 21 H Pass 22 H Pass 23 H Pass 24 H Pass 25 H Pass 26 H Pass 27 H Pass 28 H Pass 29 H Pass 30 H Pass 31 H Pass 32 H Pass 33 H Pass 34 H Pass 35 H Pass 36 H Pass 37 H Pass 38 H Pass 39 H Pass 40 H Pass 41 H Pass 42 H Pass 43 H Pass 44 H Pass 45 H Pass 46 H Pass 47 H Pass 48 H Pass 49 H Pass 50 H Pass 51 H Pass 52 H Pass 53 H Pass 54 H Pass 55 H Pass 56 H Pass 57 H Pass 58 H Pass 59 H Pass 60 H Pass 61 H Pass 62 H Pass 63 H Pass 64 H Pass 65 H Pass 66 H Pass 67 H Pass 68 H Pass 69 H Pass 70 H Pass 71 H Pass 72 H Pass 73 H Pass 74 H Pass 75 H Pass 76 H Pass 77 H Pass 78 H Pass 79 H Pass 80 H Pass 81 H Pass 82 H Pass 83 H Pass 84 H Pass 85 H Pass 86 H Pass 87 H Pass 88 H Pass 89 H Pass 90 H Pass 91 H Pass 92 H Pass 93 H Pass 94 H Pass 95 H Pass 96 H Pass 97 H Pass 98 H Pass 99 H Pass 100 H Pass

then led a heart to Mr. Dale's ace. Down four—1100 points.

Reaching a game freely when there is no chance of even making your book—this couldn't happen to Mr. Truex. But it did.

The killer was the diamond overcall—a routine bid, certainly made with no thought of being brilliant. Yet it threw the North-South bidding completely out of joint. It put Mr. Truex on a deadly spot, giving him the option of passing a good hand and possibly losing a lay-down game or entering the bidding and risking a damaging set.

LINDSAY'S
CARTAGE AND STORAGE LTD.
Established 1910
MOVING . . . PACKING . . . CRATING
SHIPPING . . . FORWARDING . . . STORAGE
Experienced handling local, National and
World-wide Shipments.
"MOVE WITH EASE . . . SHIP VIA LINDSAY'S"
Agents—Allied Van Lines Ltd.
Phone 69 or 68 Cor. 2nd and Park Ave.

TODAY AND WEDNESDAY
Have you seen my little boy?
Do you know who he is?
Do you know where he is?
WHERE! WHERE!
IS THE
"LITTLE BOY LOST"
Starring BING CROSBY, CLAUDE DAUPHIN
Also
"ALL GIRLS ON DECK" **CAPITOL**
"TOTS OF FUN" A FAMOUS PLAYERS THEATRE

SCALDING! SIZZLING!
and RAW!!
Adult
Entertainment
The rough, tough story
of how the LAW took a
chance on a B-girl...and
won...as the whole
underworld joined the
crackdown against the
spy menace!
SHE HAD A JOB TO DO
and she was doing it
the only way she knew
Pickup
ON SOUTH STREET
RICHARD JEAN THEL
WIDMARK PETERS RITTE
Today and Wednesday
TOTEM
Cartoon
Evenings 7: - 9: p.m. A FAMOUS PLAYERS THEATRE

TO
fight
SLUDGE

Cut down maintenance costs
and unnecessary repair bills
...ask for Marvelube M.S.*
—the heavy-duty motor oil
that gives long-lasting
protection against gummy
engine sludge. Marvelube
helps keep your engine clean
because it's highly detergent.
It fights bearing corrosion
because it's anti-acid. This
tough, free-flowing oil keeps
your engine young longer!
For dependable all-round
engine protection, ask for
Marvelube—Canada's largest
selling motor oil!

MORE
MOTORISTS
USE

M.S.* (Heavy Duty)

Marvelube

Canada's
largest selling
Motor Oil



See your



*MS—new American Petroleum Institute classification denoting the most severe service conditions encountered. Marvelube meets all requirements for this type of service.

See for Yourself

THERE IS A McCULLOCH POWER CHAIN SAW FOR YOUR NEED . . .

Here, in the 1953 McCulloch Models, 33, 47 and 4-30, is a complete line of one-man Power Saws, designed to increase production and reduce labour in all woodcutting activities. Each model is the result of

in-the-field research together with the most advanced chain saw engineering and manufacturing facilities in the world. Choose the McCulloch model for your needs.

MODEL 33
20 lb.

This is the world's lightest power chain saw. Rugged and powerful, the Model 33 cuts through trees 18 inches in diameter in less than one minute. Available with 12" or 16" blade. **\$265**
F.O.B. Vancouver

MODEL 47
30 lb.

A chain saw of extra-production performance—yet sold at a surprisingly low price. Weighs only 30 pounds, and incorporates the heavy-duty features that make it stand up under the toughest work. Six models available—14" to 36" blade and 15" bow saw. **\$311**
F.O.B. Vancouver

MODEL 4-30
30 lb.

The fastest cutting one man chain saw ever developed. Light weight, with maximum power delivered to the chain makes the 4-30 a real production tool in timber up to 5 feet. Six models available—14" to 36" blade and 15" bow saw. **\$369**
F.O.B. Vancouver

Get a demonstration at any of the 400 McCulloch Dealers in Canada or contact
LEMERY DISTRIBUTORS LTD.
Exclusive Canadian Agents

220 W. 1st Ave., 10555 116th St., 938 Portage Ave., 861 Lansdowne St., 525 1st Ave.,
Vancouver 10, B.C. Edmonton, Alta. Winnipeg Man. Peterborough, Ont. Quebec City, Que.

There's a McCulloch saw for every purpose. Please send for full information on all models—33—47—4-30—7-36—and the name of nearest dealer.
Name _____
Address _____

PACIFIC ELECTRIC

718 Second Ave. W. Blue 992