

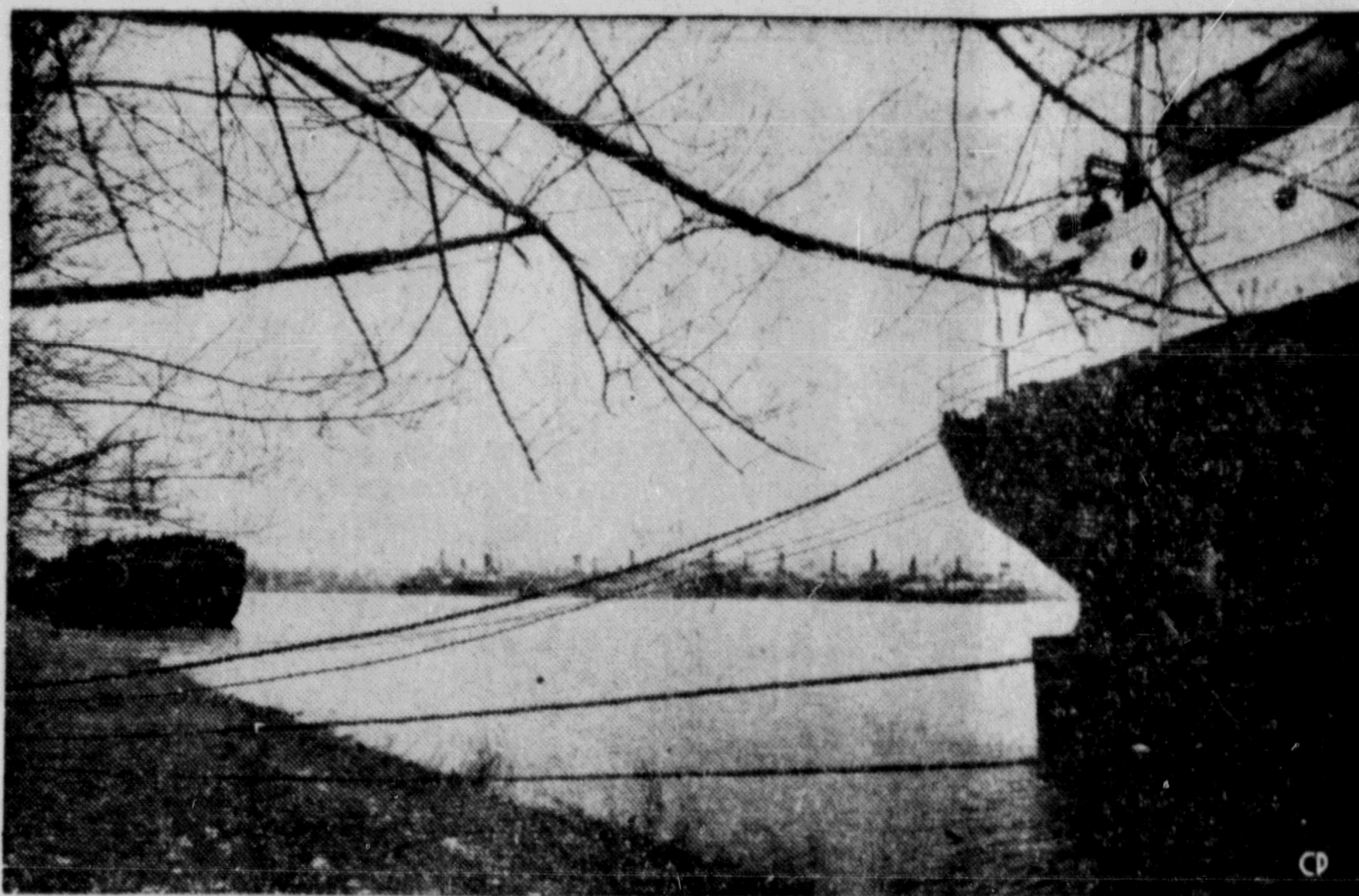
FINE HOGS
CHARLOTTETOWN (CP)—Fea-
ture of a record export of hogs
from Prince Edward Island in
1952 was that nearly 52 per cent
were grade A animals, said H. A.
Clay, senior fieldman with the
federal agriculture department.
He said the all-Canadian average
for grade A hogs is about 25 per cent.

WALLACE'S DEPT. STORE

CLEARANCE SALE

LADIES' WEAR — MEN'S WEAR
GIRLS' WEAR — BOYS' WEAR

WALLACE'S DEPT. STORE



GREAT LAKES SHIPS IN 1952 carried more cargo and made more trips through the Welland Canal than in any other season in the 123-year history of the waterway, built to bypass the turbulent Niagara river. Total passages up and down the eight locks to Dec. 15 were 9,347 with tonnage of 17,738,515. Here, framed by two ships already moored to the canal bank, freighters in the distance jockey into line outside the Port Weller dry dock where many will be overhauled this winter.

Forester Contends Private Investors Should Take Over From Government

VANCOUVER (CP)—Forester John D. Gilmour told delegates to the annual convention of the B.C. Truck Loggers Association Thursday that private investors should be allowed to take over forest lands from the government.

"It is monstrous to think that just because it happens to be forest land, the governments shall be allowed to continue as owners of more than 80 per cent of the productive land area in Canada," he said.

"The point has been reached where in many places it would be economical to grow timber crops if private enterprise was given the opportunity."

Earlier in the convention a dispute over log scaling methods erupted.

Delegates clashed with Forester Minister R. E. Sommers and demanded the government "go slow" in its change-over from the board feet method of log scaling to the cubic scale.

The meeting with the minister was held behind closed doors, but it is understood the minister told the loggers he would take their demands under consideration.

The lumbermen charged the cubic scaling method was imposed without their knowledge and said it will double the cost of scaling in the B.C. forest.

Chamber of Commerce Seeks More Highway Work in B.C.

VICTORIA—The British Columbia Chamber of Commerce has asked the government to provide an adequate share of the 1953-54 budget for highways development.

An analysis presented to the Cabinet this week revealed a startling inconsistency in road expenditures during the past six years. Banner year for highway work in B.C. was in 1949-50 when almost \$39,000,000 was spent in construction and maintenance.

Stressing that this seemed a more realistic approach to the growing needs of the rapidly-expanding province, the Chamber deplored any tendency to reduce such work.

Alarm was expressed at a recent report that B.C.'s tentative budget allocations for highways development for 1953-54 would be \$22,000,000.

The brief, which included many other items recently approved by the annual meeting of the Chamber of Commerce, was presented by a delegation headed by President J. V. Hughes, of Vancouver. Others in the group included L. G. Eerooyd of Vancouver, executive secretary.

SCREEN ★ FLASHES

"Springfield Rifle," which began a three-day run at the To-tem Theatre yesterday is a drama based on a thrilling episode from the history of America's most famous firearm, made in Springfield, Mass.

The Warner Brothers show received its world premiere in the city of Springfield last October 7 when three of the stars in the picture—Phyllis Kirk, David Brian and Guinn (Big Boy) Williams visited the city to participate in the stage festivities.

During the production of the picture, people involved made news: Gary Cooper and Phyllis Thaxter, who co-star in the film, are the children of U.S. Supreme Court justices.

Cooper's father was a justice of the Montana Supreme Court, and Miss Thaxter's father is still on the bench of the Supreme Court of Maine.

George Ross, who stocks more than 1,000 guns in his home arsenal and is an authority on 19th century rifles and pistols, not only provided some of his civil war firearms for the picture, but landed an acting role for himself.

Guinn Williams, a Texas rancher before he went to Hollywood, runs a 101-acre strawberry ranch in San Diego County, California.

David Brian has always been in theatre roles. His first job was as a floorman at New York's Roxy Theatre.

Gary Cooper felt right at home during filming amid ice and snow of Mount Whitney.

Motorists Warned by BCAA Of Dangers on Icy Roadways

While snow tires and chains can be of great aid when streets and roads are snow clogged or icy, traffic safety experts warn motorists not to be over-confident just because their cars are so equipped.

Charles E. Thompson, chairman of the traffic and safety committee of the B.C. Automobile Association, today urged drivers to be extremely cautious on roadways which become slippery due to weather conditions, and to "take it easy."

"Some motorists erroneously think that because they have equipped their cars with chains or tires having special winter treads they can throw the usual winter cautions out the window," Mr. Thompson said. "Snow tires are an aid to traction, but are chains under special conditions, but no matter how good they are, they cannot substitute for a dry roadway."

"Good advice, is never to accelerate or decelerate suddenly on icy pavements, make turns slowly and smoothly without sudden swerves, and start in and on snow and on smooth ice."

GARY COOPER

SPRINGFIELD RIFLE

WARNER BROS. PRESENTS

DAVID BRIAN — PHYLIS KIRK — GARY COOPER — GEORGE ROSS — DAVID BROWN — PHIL KELLY — CHARLES MARQUIS WARREN — FRANK CRAVY

TODAY and SATURDAY

Evenings 7: - 9: p.m.
Matinee Saturday 2 p.m.

TOTEM

A FAMOUS PLAYERS THEATRE

DORIS DAY * RAY BOLGER

WARNER BROS. MUSICAL

April in Paris

TECHNICOLOR

CLAUDE DAUPHIN — JACK ROSE — MELVILLE SHARPLESS — DAVID BUTLER

TODAY and SATURDAY

Plus—
CARTOON - NEWS
Shows 7 - 9:06

CAPITOL

Saturday Matinees 2 - 4:27

Frank Crawshaw

INTERNATIONAL "ONE-MAN THEATRE"

The distinguished British character actor of stage, screen, radio, and television.

MONDAY, JAN. 19th ONLY

"ONE MAN THEATRE"

The theatrical experience of a lifetime packed into one memorable evening.

Comedy Skits — Original Character Studies — Shakespearean Excerpts — Dickens Characters

TUESDAY, JAN. 20th ONLY

"A CHRISTMAS CAROL"

CHARLES DICKENS IMMORTAL MASTERPIECE

A faithful-to-text performance of the world's most loved, most popular, and most widely read story during the past 100 years.

Given in the Colorful Costume of the Period

8:00 p.m. each night
Adults \$1.00
Children and Students 50c

CIVIC CENTRE

Sponsored by the Prince Rupert Rotary Club

SQUARE DANCING

SATURDAY
JANUARY 17

CIVIC CENTRE AUDITORIUM

Everyone Welcome

SEMI-ANNUAL STORE WIDE CLEARANCE SALE

NO REFUNDS
NO EXCHANGES
NO CHARGES

Commences Saturday 9 a.m. • Thousands of Dollars of Merchandise Must Go

LADIES' WINTER COATS Reg. to 35.95 Now 22.95 Reg. to 40.95 Now 22.95 Reg. to 62.95 Now 41.95	LADIES' SPRING COATS Reg. to 28.95 Now 16.95 Reg. 35.95 Now 22.95 Dress up for spring and also save	100 LADIES' DRESSES 2 for 1 Pay price of FREE highest and get one SORRY... NO TRY-ONS	LADIES' COCKTAIL DRESSES Reg. to 21.95 Now 12.95 Reg. to 27.95 Now 19.95
Ladies Smartly Styled Suits Reg. 29.95 NOW 19.95 Reg. to 60.00 NOW 39.95	LADIES' NYLONS 45 gauge PAIR 89c	LADIES' PULLOVERS Reg. to 3.95 Now Only 2.29 PULLOVER CARDIGANS Reg. to 5.25 NOW 2.99	LADIES' BRIEFS Reg. to 89c NOW 49c
LADIES' BLOUSES Nylon and Crepe, Bargain of the year. Reg. to 4.95 TO CLEAR 1.99	LADIES' SILK NITIES Reg. 3.95 TO CLEAR 2.99 Reg. to 6.95 TO CLEAR 3.99	LADIES' SKIRTS WIDE RANGE Reg. 7.50 TO CLEAR 5.49 Reg. 9.95 TO CLEAR 7.95	LADIES' HOUSECOATS WOOL PLAID—Reg. 14.95. To Clear 10.95 PLAIN WOOL—Reg. 16.95. To Clear 12.95 SILK—Reg. 9.95 To Clear 7.95 CHENILLE—Reg. 5.50 Now 4.29
GIRLS' COATS Reg. 17.50 TO CLEAR 12.95	CHILDREN'S FLANNEL KIMONAS Reg. 1.95 (sizes 2-4-6) Now 1.49 Chenille—Reg. 2.98 Now 2.29	3-PIECE COAT SETS Reg. 18.95 NOW 13.95 Reg. 13.95 NOW 9.95	LADIES' RAINCOATS Reg. 24.95 TO CLEAR 16.95 Reg. 29.95 TO CLEAR 19.95
GIRLS' BETTER DRESSES Wide Range—Sizes 6 to 14X 20% DISCOUNT	GIRLS' WOOL DRESSES Reg. 4.50 NOW 3.29	BOYS' SWEATERS Reg. 4.25 TO CLEAR 2.99	LADIES' and CHILDREN'S Wool Mitts and Gloves Reg. 69c To Clear 49c Reg. 1.25 To Clear 79c
GIRLS' SKIRTS Reg. 5.50 TO CLEAR 3.95 Finest range in city	SNOWSUITS 1-Piece, reg. to 9.95 Now 6.95 2-Piece, reg. to 13.95 Now 9.95 Made of Waterproof Tufhide	BOYS' COMBINATIONS Reg. 2.10 NOW 1.49 Sizes 6 to 14	GIRLS' PYJAMAS (Flannel) Reg. 2.65 TO CLEAR 1.89
GIRLS' CHENILLE HOUSECOATS Reg. 4.95 NOW 3.95	LUGGAGE SETS AT 20% DISCOUNT Largest range in city	BOYS' PYJAMAS Reg. 3.25 NOW 2.29	GIRLS' Long Cord Jackets Reg. 8.75 TO CLEAR 5.95
BOYS' WOOL PLAID JACKETS Sizes 8 to 14. Regular to 7.50. NOW 5.95 WOOL AND SATIN JACKET WITH FUR COLLAR—Regular 10.95 NOW 8.95	BOYS' PANTS Reg. to 5.95 NOW 2.99	BOYS' JEANS (Sanforized) Reg. 3.25 NOW 2.29	GIRLS' Wool Plaid Jackets Reg. 8.75 TO CLEAR 5.95

DOM'S DEPT. STORE

BOYS' WOOL JACKETS
Sizes 2-4-6. Reg. 4.95 **TO CLEAR 3.69**