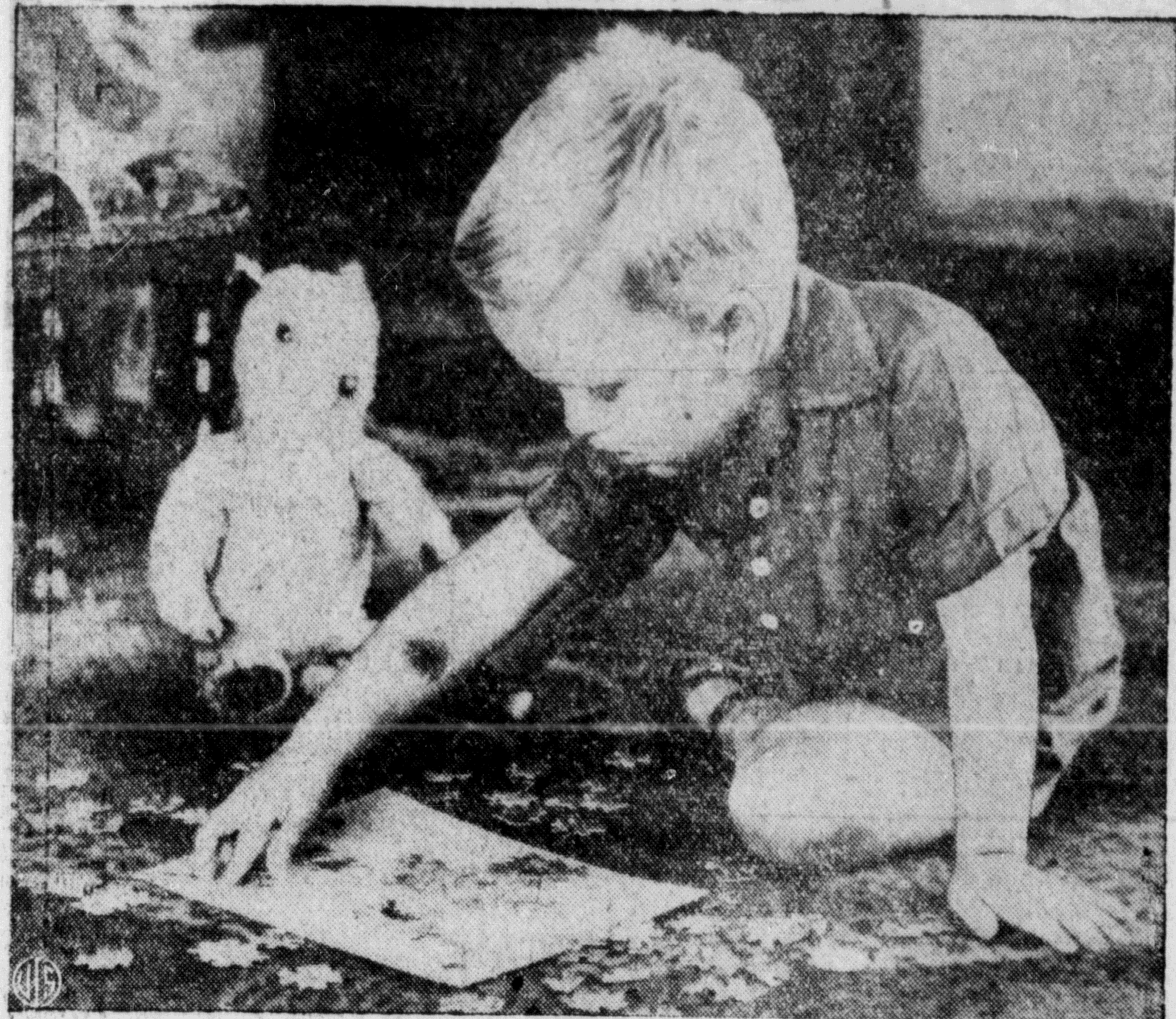


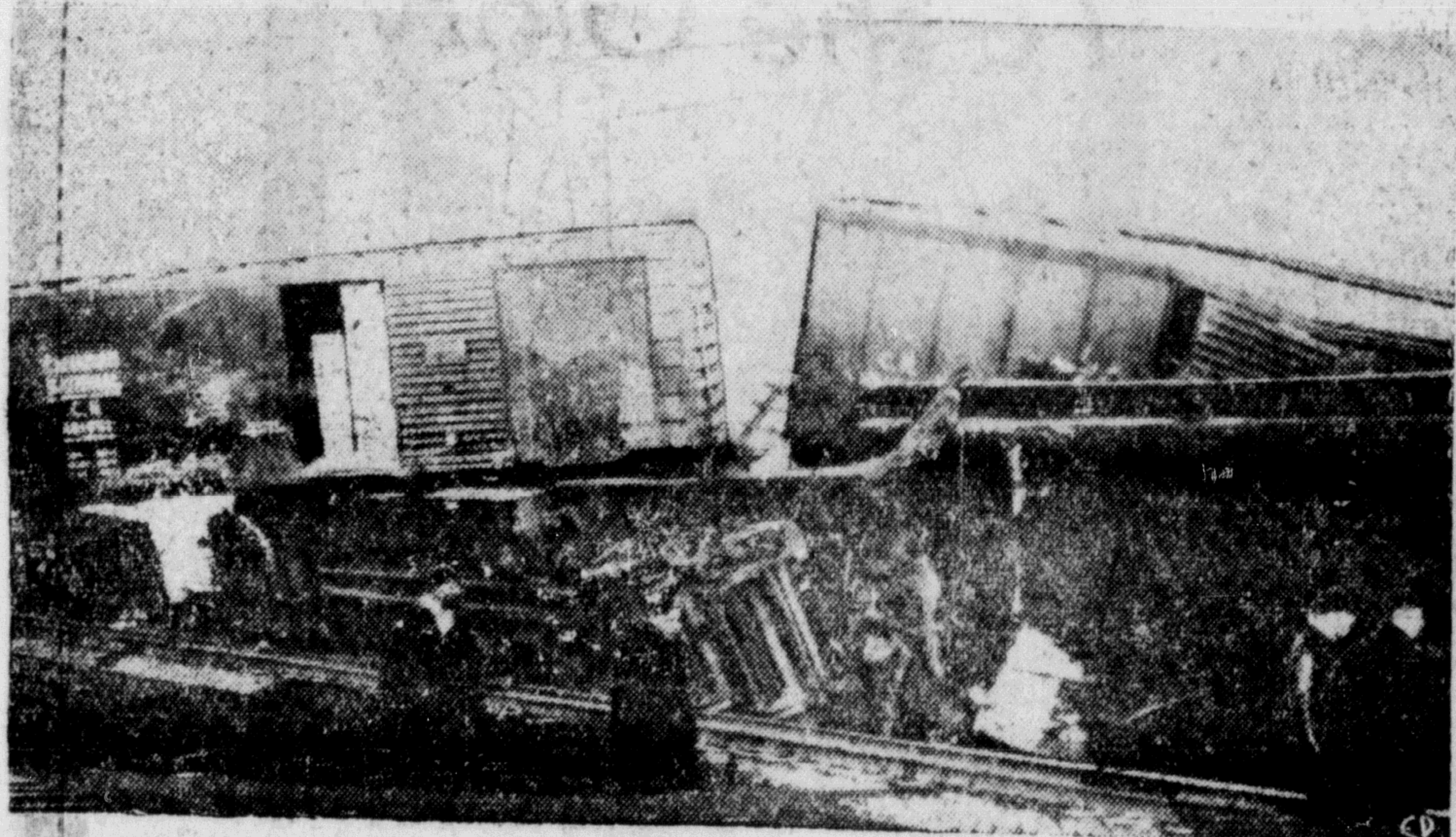
Around the World News in Pictures



NEVILLE GEORGE, 3, of Avonside, Christchurch, New Zealand, shows promise of becoming the city's jigsaw puzzle king. He is shown here assembling two puzzles simultaneously. He has been known to put four puzzles together from a pile of pieces in almost as many minutes as it would take another enthusiast to assemble one.



AUSTRALIAN ABORIGINES, bedecked in white cockatoo feathers and ochre, are shown as they danced for Queen Elizabeth and the Duke of Edinburgh during the royal couple's recent visit to Toowoomba in Queensland, Australia. So one of the natives were flown in from the northern territories 3,000 miles away for the occasion.



THREE MEN WERE KILLED when a CNR Montreal-bound Ocean Limited struck an open switch and plowed into standing freight cars on a siding near Montmagny, Que. The speeding express hurled the freight cars into a shed that contained 20 boxes of dynamite. A fast-working fire brigade doused the hot cinders from locomotive before fire spread to dynamite.



WAVING "AU REVOIR" to their friends, two shapely French sailers prepare to get under way in their boat. They are French movie actresses Lise Bourdin (left) and Elisa Lamotte who spend their free time sailing while attending the Seventh Film Festival at Cannes.



LT.-CMDR. HARRY SHORTEEN, 34, of Calgary has been appointed commanding officer of the naval radio station at Fort Churchill, Man. He succeeds Lt.-Cmdr. Charles R. Martin, 32, of Halifax. A native of England, Lt.-Cmdr. Shorten was at one time in command of HMCS Athabaskan at Esquimalt, B.C., and prior to that served as executive officer of the destroyer during her third tour of duty in the Far East. (CP from National Defence)



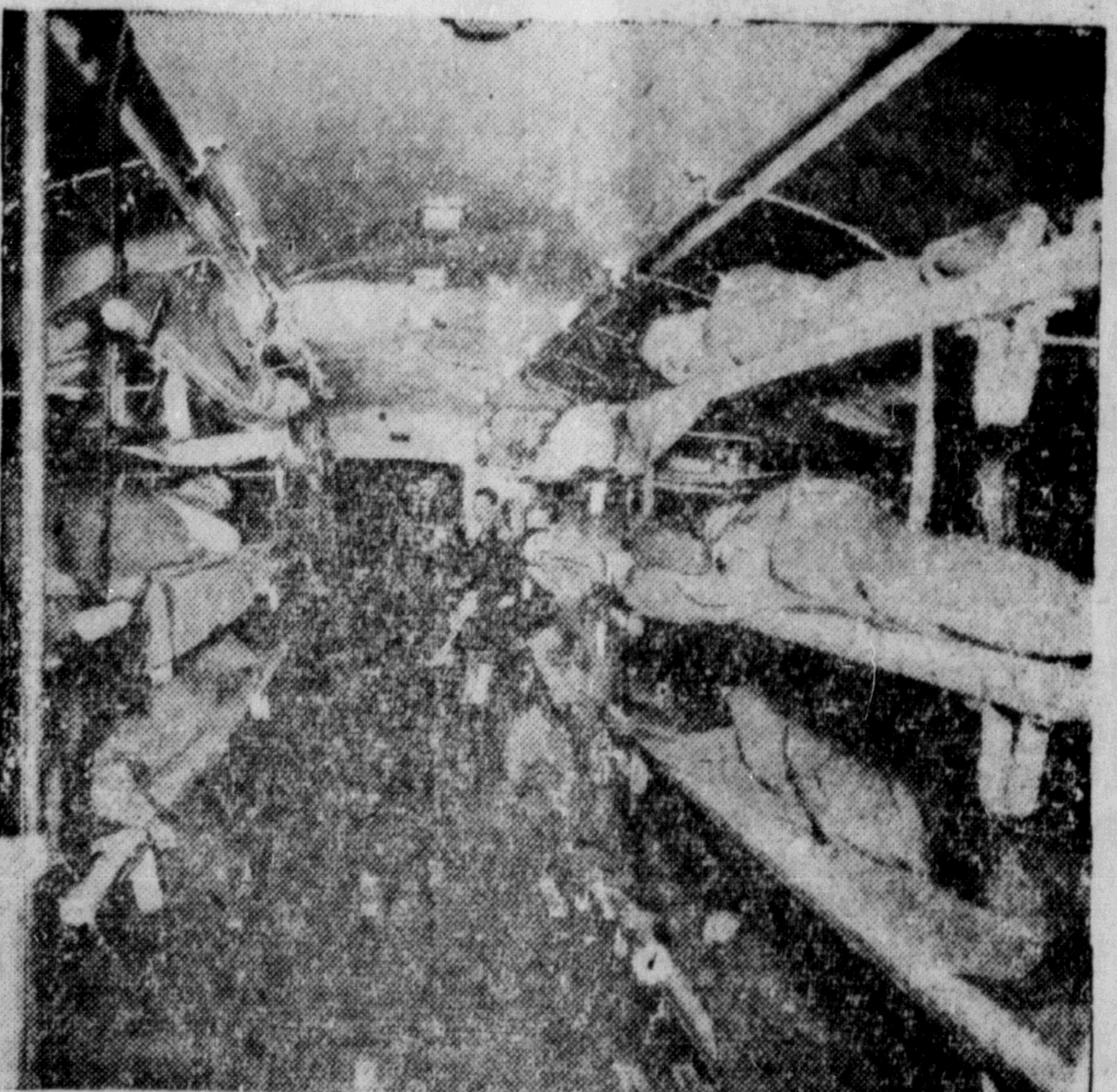
AN UMBRELLA sprinkled with big, red roses adds sparkle to milady's costume when spring showers start to sprinkle from the skies. It is part of the Federation of Umbrella Industries collection now being shown in Paris.



MRS. CLARE BOOTHE LUCE, U.S. Ambassador to Italy, and Gen. Alfred Gruenther, head of SHAPE, turn on the charm for the cameraman during the former's recent visit to SHAPE headquarters at Rocquencourt, France.



LIEUT. AND MRS. KIRWIN KELLY of Salina, Kan., display a papoose-type rumble seat devised for their daughter, Pammy, 13 months. Now they can take her along when they go out for a spin on the bicycles that Kelly recently brought back from England.



THIS IS THE INSIDE of the wheelchair coach, designed by Walter Callow of Halifax, a First World War veteran, and converted by him into one of the world's biggest ambulances to be used in the event of disaster.



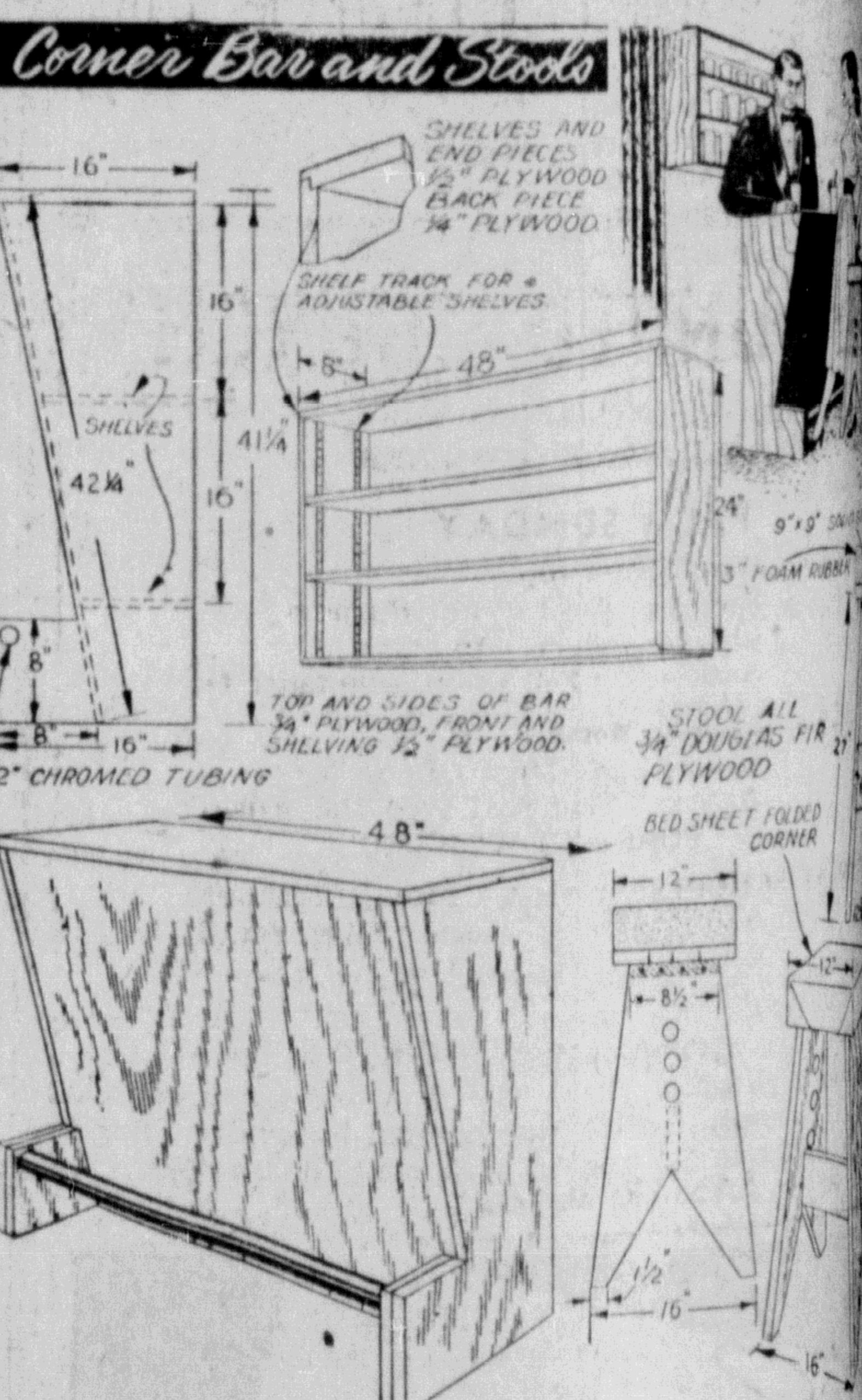
THE RCAF HAS TRAINED more than 2,700 air crew officers for nine nations of the Atlantic Treaty Organization which this month celebrates its fifth anniversary. Another group are studying at air schools across Canada. Lined up before member nation flags are representative air crew students from Italy, France, the Netherlands, Norway, Portugal, Belgium, Denmark, Britain and Canada. Representing Canada are Flight Cadet T. W. Day, Montreal, (fifth from left) and Flight Cadet F. Liso of Durham County, Eng., (from left) both wearing Canadian uniforms.



LONDONERS were surprised to encounter this bright and shiny creature strolling along the streets. The man inside the aluminum foil suit was on his way to show off the heat-protecting qualities of his strange attire at a factory equipment exhibition.



ENTHRONED ON A MORTAR and holding her badge is pretty Judy Wagner, 17, of Weehawken, N.J., is surrounded by admiring cadets from the Pennsylvania Military College. The picture has been entered in the national contest, sponsored by the Pershing Rifles unit headquarters in Nebraska. The guards are (left to right): Edward Diffendal, Baltimore, Md.; Downing, Lexington, Ky.; Richard Grabiak, Yorktown, Va.; Randolph Padula, Fitchburg, Mass.; and Richard M. Chicago.



Refreshment Unit of Fir Plywood Just Right For Smaller Home

Today's handyman host can build his own refreshment corner and be right in on the trend to built-in serving spots designed for the smaller home.

The simple fir plywood shelves, bar and stools shown here can be fitted into a small area of your livingroom, rumpus room or den. Forming a handsome unit, they can be finished either to contrast or complement present decorative colors of the rooms.

All parts of Douglas fir plywood are simple to cut from panels and can be assembled in an evening. Thickness of top and sides of the bar should be 3/4 inch to give a sturdy unit, with front panel and shelves cut from 1/2 inch plywood. Parts can be sawn from 1/2 inch panel with shelves and pieces of the wall fixture 1/2 inch.

A 12-inch square of foam rubber 3 inches thick is glued to stool tops for cushion. Cover with cloth or any suitable material. The bar rail, a decorative feature, is of chrome tubing 1/2 inches in diameter.

A few hours in your workshop will see all pieces and joints glued and nailed. Pick your own finish.

Given a good primer coat, unit can be painted to match walls of your room and will be a beautiful finish in any work paint or enamel.



DOUGLAS BADER, famed legless pilot of the RAF during the Second World War, has written a book, "Reach for the Sky." It chronicles his career from his days as a cocky English schoolboy to his life now at 44 as a flying executive for a big oil firm in Britain.