

# HINTS ON HOME BUILDING, REPAIRING, REMODELLING

## Library at Parliament to be Fireproofed

OTTAWA (CP)—Work will begin late this spring on fireproofing Canada's historic library of Parliament and will involve replacing famous inlaid wooden floors with fire-resistant material and old wooden beams with steel.

Officials said the work will start immediately after Parliament prorogues, probably in mid-May. It may cost \$1,000,000.

The fireproofing steps have been recommended by a committee set up following last August's fire which caused water damage to the interior of the 56-year-old high-domed library and to thousands of books.

All but a few hundred of the books have been repaired through drying, anti-moulding and rebinding and now are stored in other government buildings. The library staff has been operating on a restricted basis since the fire and after the fireproofing gets under way they will move to temporary quarters.

The library's floor, built of inlaid wooden sections, was warped by water damage in the

fire. The committee decided that it should be replaced by modern fire-resistant material.

Also due for replacement are wooden beams around the walls and in the big library dome. They will be replaced by steel.

The committee was divided on the question of replacing the library's magnificent curved

wooden panelling which extends around the circular interior of the library.

Parliamentary librarian F. A. Hardy says he will resist any suggestion that the panelling be removed. It could be treated with fire-resistant paint or varnish to nullify it as a fire hazard.

## Prince George Leads All B.C. In Sale of Crown-Owned Lots

PRINCE GEORGE.—Prince George led every city, town, village and municipality in British Columbia last year in the sale of crown-owned town lots.

Sales were up 1,000 per cent over the previous year.

From Victoria comes word that Prince George and its adjacent suburbs accounted for close to two-thirds of B.C.'s entire revenue from sale of town lots.

Sales of such property here were more than three times greater than similar sales for Vancouver, second largest contributor to provincial town lot revenue.

Figures being compiled for annual reports in Victoria show that 1952's town lot sales here were only a fraction less than the entire total for the province in the previous 12 months.

Lands Department figures show that 1,064 lots in and around Prince George were sold last year, compared with 1,647 for all B.C. in 1951.

While only 197 town lots were

sold here in the 12 months preceding Dec. 31, 1951, for a total of \$17,808, the 1,064 sold last year brought \$176,869.

Total revenue for B.C. from this source last year was slightly greater than \$300,000.

## Truckers Make Five Per Cent Profit in '52

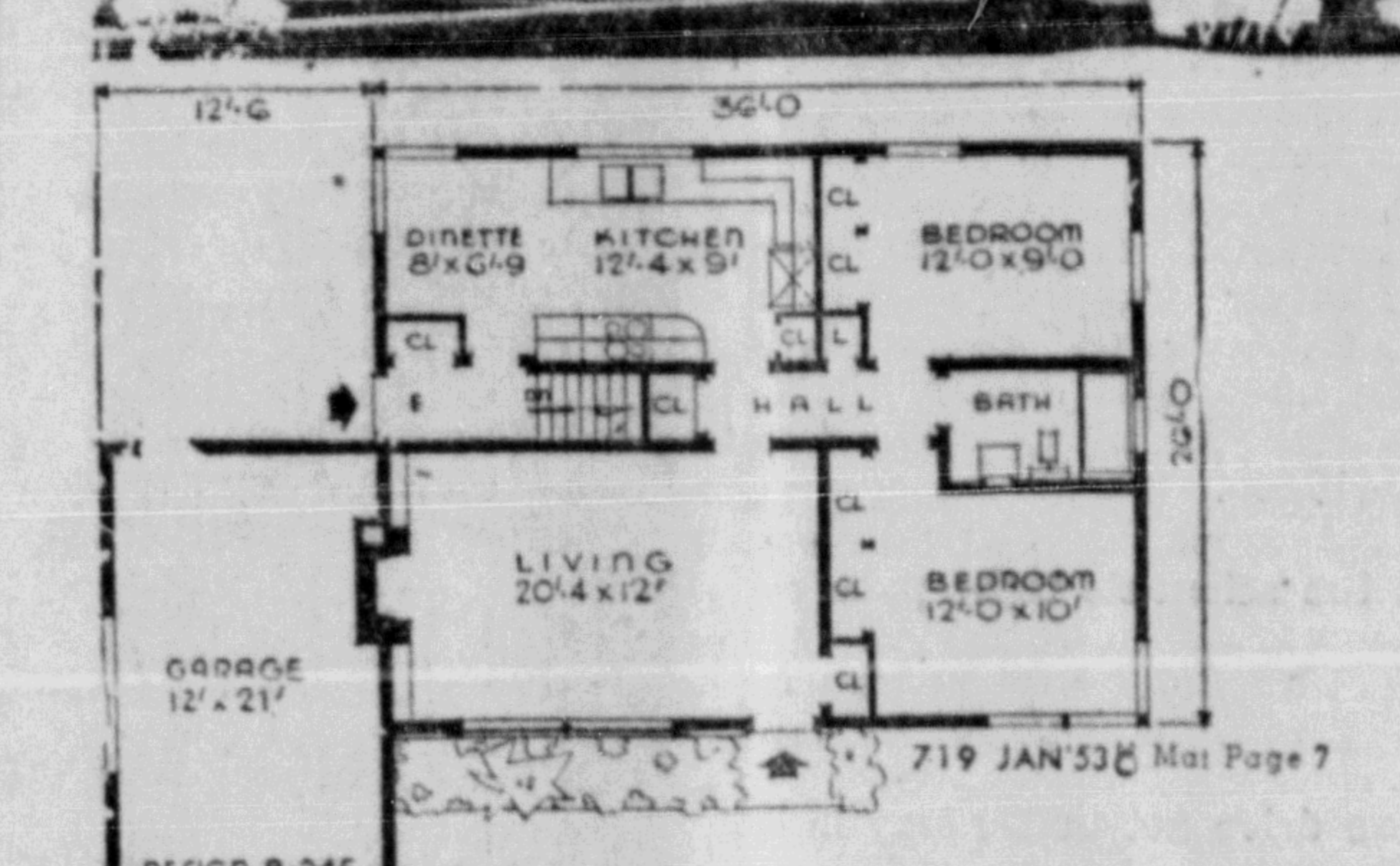
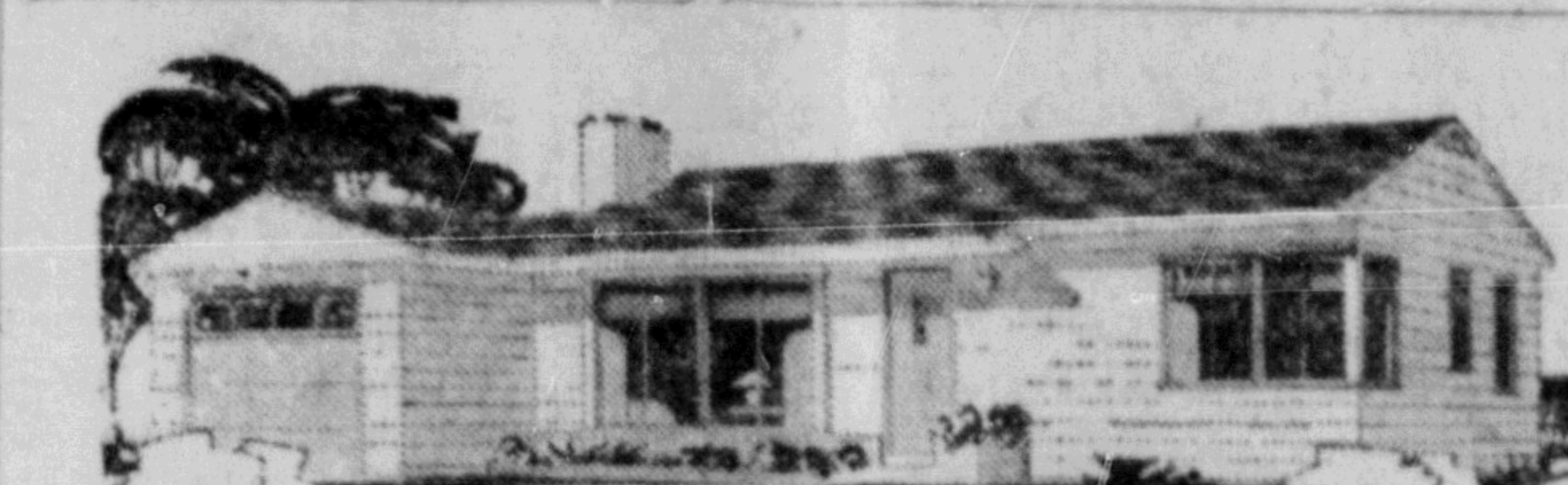
TORONTO (CP)—Canada's trucking industry carried a freight traffic of about 34,000,000 tons in 1952. G. M. Parke, president of the Canadian Automotive Transport Association, said in a year-end statement.

Mr. Parke said operating expenses and taxes were rising faster than gross revenues. He said gross revenues would reach \$180,000,000 but net profit would likely not be more than five per cent.

"The cost of materials and supplies, new construction, equipment, salaries and wages have been moving ahead at a faster clip than charges for freight transport with the result that revenue percentages, are lower after income taxes are paid."

Free enterprise gives everybody a chance to get to the top. But some folks, however, depend too much on the free.

Prince Rupert Daily News  
Monday, January 12, 1953



DESIGN B-245—Because of its rectangular shape and straight gable roof, this plan is an economical plan to build, with a minimum of cutting and framing. It consists of a full basement, attached garage, living room, combination kitchen-dinette and two bedrooms.

Exterior finish is wide siding with asphalt shingles. Plans provide for a brick planting area.

Other features include casement windows, fireplace with book shelves, linen closet, an efficient kitchen arrangement and closets at each entrance. Bedroom closets are the wardrobe type with overhead storage.

Floor space is 936 sq. ft. with cubage of 17,550 cu. ft.

For further information about DESIGN B-245, write the Small House Planning Bureau of Canada, Saint John, New Brunswick.

A SMALL HOUSE PLANNING BUREAU DESIGN No. B-245

## Don't Let Colors 'Fight' When Choosing Decorating Plan

In choosing room colors, start with the room's largest areas and work to the smaller. Select wall and floor colors first; then, according to the type of color scheme to be used, pick harmonizing colors for draperies, upholstery and accessories.

Do not let colors "fight" each other by using them in the same proportions. Pick one color to dominate, then use lesser amounts of secondary ones. To test for proper proportions of two colors to be used together, hold paint sample chips side by side, then cover up different areas of the minor color until satisfied with the color balance between them.

A room with only light and grayed colors is usually dull. On the other hand, a room in which the predominant color is pure, whether light or dark, is harsh and tiresome. That is why most paint is mixed down from the pure colors.

**BASIS OF PLAN**  
The large areas of walls, ceiling and floor form the basis of any color plan. Generally, these areas should be soft and grayed to provide a background which combines easily with stronger furnishings and accessory colors.

A little pure, strong color will balance a large area of soft, grayed color. Occasional chairs, pictures and small accessories can be brilliant in color without destroying the unity of a color plan.

For your color plan, select colors that your family likes, making sure they are of the correct value and intensity. Painting swatches will help you in matching or harmonizing paint shades with your floor, upholstery and wallpaper colors.

**BOLD COLOR**  
One color consultant says one should forget rules like "blue and green should not be combined." Modern color usage is bold, different. By selecting from color samples, you discover many pleasing combinations.

Starting with beige floor covering, other major colors in the room might be red, aqua, leaf-green.

Combine spruce green with plum and peach, or with purple and beige, for a warm, intimate atmosphere. The red is dramatic in combination with plum, lime, ivory; sophisticated with

**No Cold Feet**  
Relief is in sight for policemen, firemen, construction workers, sportsmen, and just plain citizens who suffer from cold feet. The New York Journal of Commerce says the boot now used by the armed forces in the Arctic soon will be produced for civilian use. Called "Thermo-boot," the product makes use of wool and dead air space to insulate the feet from cold.

**U.S. Health at Peak**  
Feeling pretty good these days? So are most Americans. The U.S. death rate in 1952, according to the New York Journal of Commerce, was at an all-time low. Mortality was reduced in tuberculosis, childhood diseases, pneumonia, and influenza. The number of suicides declined, too.

## Beautiful, Convenient Home Necessary

It is important for the family to have a beautiful, comfortable, convenient home in which to live, to play and to work together. The joy of the family can be greatly influenced by the beauty of the home. The members of the family can be brought up in a beautiful, healthy environment. It rests on the shoulders of the homemaker to maintain a beautiful home in which the family can grow up together.

## Natural Wood Finish Popular In Modern Furniture Styles

The natural color of wood can be retained when finishing furniture. This type of finish is particularly popular in modern furniture styles.

A natural finish for soft woods is obtained by thinning the natural paste wood filler and painting it on the wood. It is allowed to set, then the excess filler is wiped off and the remainder left to dry thoroughly. The surface is then sanded until satin smooth then washed well. A final coat of wax or varnish is then applied.

An oil finish is best used on hard, close grained woods. This is the finish that brings out the true grain and color of the wood. The process is a long and laborious one that involves a great deal of rubbing in order to produce a surface that will not mark.

Boiled or raw linseed oil is used. The boiled oil will dry faster than the raw product. Heat the oil by placing it in a container in a pan of boiling water. Do not work with the linseed oil near intense heat or flame.

Apply the oil to the wood surface with a lintless cloth and polish with a woolen cloth. Many coats of oil must be applied to give a good finish. These coats should be spaced over a period of a week each, to allow for absorption.

An oil varnish finish is similar to an oil finish but the lustre and hard surface is produced quicker. The varnish is mixed with the oil and the process is then identical to the oil finish process. Mix the varnish and oil in the proportion of 1/2 varnish for a soft lustre finish and 1/3 equal amount for a high lustre finish.

Properly built with heavy legs and a thick birch or maple top, a home workbench can take a lot of hard usage in the building of garden furniture, heavy bracketed window boxes, or whatever it was you built the workbench for in the first place.

A rough workbench can be built with legs of 2x4s, framework of doubled 1x4s and a double top of planks of about 1 1/2-inch stock. The first layer of planks is laid lengthwise, the second layer crosswise. Nail heads naturally, are counter-sunk.

Open season for hobbyists inventors and displaced cabinet makers handicapped for handiwork because we don't have the right place to work.

Try Daily News Want Ads

**HANDYMAN HOME SERVICE**  
Painting and Decorating  
**General Contractors**  
Building and Repair of all kinds.  
P.O. Box 1678 Phone Red 894

**NORTHWEST CONSTRUCTION LTD.**  
GENERAL CONTRACTORS  
P.O. Box 1381 Prince Rupert  
COMMERCIAL - INDUSTRIAL - DOMESTIC CONSTRUCTION and MAINTENANCE

**COLD MEANS COAL**  
AND COAL MEANS ALBERTA FOOTHILLS (SOOTLESS) COAL  
LUMP ... EGG ... NUT and STOKER.

I've just told 'er—It's getting colder!

MRS. HOUSEWIFE

**DISCOUNT OF \$1.20 PER TON ON EGG COAL**  
WILL EXPIRE JAN. 15TH

For Prompt Delivery  
PHONE 651 or 652

**Philpott, Evitt & Co. LIMITED**

**GRANTHAM Electric Electrical Contractors**

★ NEW CONSTRUCTION ★  
★ REWIRING OLDER BUILDINGS ★

844 Summit Phone Blue 293

**EXCHANGE YOUR ATTIC FOR A COSY BEDROOM**

Have you ever thought of turning the unused attic space into a bedroom for the children or for guests?

We are prepared to do this with superior material workmanship... right!

Phone 909 for Estimate  
**GREER & BRIDGEMAN LIMITED**  
215 1st Ave. W. P.O. Box 100

**Well What D'ya Know!**

We ARE going to have a winter this year after all. And so many of us delayed that insulating because we thought, this year, it just wasn't going to get cold at all.

Well, we would suggest that you see us right away and discuss your **HEAT LOSS** problems with us. **INSULATION** can save you real money and give you lots of added comfort during these cold days and nights.

**GYPROC WOOL INSULATION \$65.00 per 1,000 sq. ft.**  
**ALUMINUM FOIL INSULATION \$40.00 per 1,000 sq. ft.**

**ALBERT & McCAFFERY LTD.**  
COW BAY  
And remember, too, your heating dollar goes farther with **MCLEOD RIVER HARD COAL**

PHONE: 116 - 117 - 58