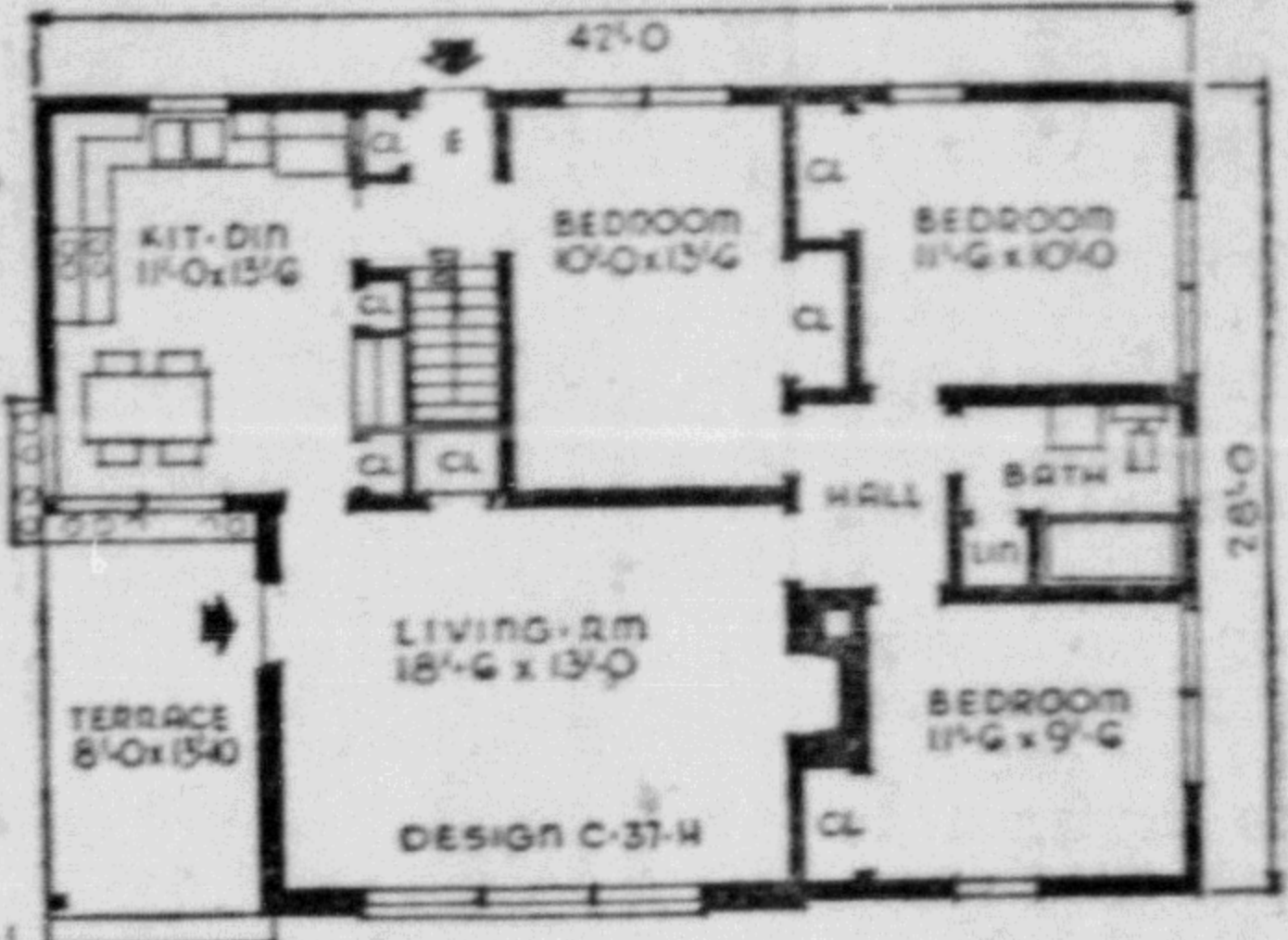


HINTS ON HOME BUILDING, REPAIRING, REMODELLING

4 Prince Rupert Daily News
Monday, February 2, 1953



DESIGN C-37-H has many interesting plan features. For instance, the kitchen has a 3-way exposure, with the front area reserved for dining, under three corner windows. A double compartment sink, with range on the left and refrigerator on the right, is located under the rear window. Two closets are also provided, with a sideboard between.

Each bedroom has a large wardrobe closet with overhead storage, the front and rear entrances have coat closets. The centre bedroom can be used as a work or play room. This plan is also available with gable roof. Floor area is 1068 sq. ft. and cubage 21,573 cu. ft.

For further information about **DESIGN C-37-H**, write the Small House Planning Bureau, St. Cloud, Minn. In Canada, the Small House Planning Bureau of Canada, Saint John, New Brunswick.

Amateur Can Paint Room Successfully

The home-owner can economically paint a room successfully with a few simple pointers, say Colorizer paint authorities.

Everything should be removed from the room before starting to paint. Newspapers laid on the floor will save cleaning paint drips later.

Walls, woodwork and ceiling should be smooth and washed clean and cracks repaired.

Paint ceiling first, walls next, woodwork and trim last.

Roller Saves Time

By painting with a roller, the home-owner can often complete the walls of an average room in one evening, doing a professional job free of streaks, lap marks or drips.

Rollers are of two types: dip, which is fed the same way as a brush; and self-feeding, in which a center drum in the roller is filled with paint before starting.

On Many Surfaces

Sizes of rollers run from 2" to 9", with 7" most common. They can be used on wood, plaster, stucco, brick, metal and other surfaces. Special covers are available for textured surfaces and for stippling. A short nap is best when painting a smooth surface.

To roller-paint walls or ceiling, first do the edges and corners with a thin brush, as the roller cannot get into them. If the area to be painted is large, this should be done as the rolling progresses so that no edges become tacky by the time the adjacent surface is rolled. Colorizer paint authorities suggest this method as a means of avoiding lap marks.

The Eastern and Western zones of the Dominion of Pakistan and separated by 1,000 miles of the Republic of India.

CBC Plans TV Operation In B.C. by End of Year

VANCOUVER — Plans to proceed with construction of a television transmitter and studio in Vancouver as soon as equipment is available were announced today by Kenneth Caple, Canadian Broadcasting Corporation regional director.

Mr. Caple said the CBC has lined up a site for a transmitter tower in North Vancouver and that negotiations are under way for its purchase. He also announced that a downtown building will be purchased and equipped as CBC's television and production studio.

The CBC will build a 290-foot transmitter on Fromme Mountain at an elevation of about 1,400 feet. CBC officials were forced to move the site a short distance farther up the mountain because of complaints by residents of the area surrounding the first proposed site.

Mr. Caple said the new station, expected to be in operation before the end of this year, will cover the B.C. Lower Mainland as far east as Chilliwack and the east coast of Vancouver Island from Comox to Victoria.

When Painting Start at Top

The home-owner who paints his own house will find the best system for covering a wall is to start at the top and work down. Colorizer paint authorities advise painting in wide horizontal bands or strips from top to bottom. Brushing should, of course, all go in the same direction.

Exterior paint is not merely laid on the surface; it should be brushed in, with an easy, free stroke. The brush should be dipped into the paint to a depth of about 2", then wiped and dipped again until the paint has been worked into the "grains".

The brush that is too heavily loaded, however, will drip. The

last few strokes of each brushful of paint should be worked back into the part previously painted.

When stopping work at lunch or at the end of the day, stop painting at a window or door-frame, or, preferably, at a corner of the house.

The under-coat should dry for several days before applying the finish coat. The fewer coats applied, the better.

SAANICH PLUMBERS

For all your Plumbing and Heating Needs
Phone Blue 846
Cor. McBride and Fifth

DRESS UP YOUR HOME WITH SMARTLY-STYLED WINDOWS AND DOORS (Exterior And Interior)

We can supply and install doors and windows to any dimensions and style to meet your particular requirements.

Well-designed windows and doors are the key-note of well-groomed homes.

Phone 909 for Estimates

GREER & BRIDGES LIMITED
215 1st Ave. W. P.O. Box

USE WANT ADS

TO RENT SELL BUY TRADE ETC.

For...
Expert Workmen, Complete Electrical Service

GRANT and NEWTON LIMITED
ELECTRICAL CONTRACTORS

Phone 229 735 First Ave. West

Canada Life Reports Increase For 12th Consecutive Year

Special to The Daily News

TORONTO—Exceptional progress during 1952 was shown in the report presented at Canada Life's 106th annual meeting.

E. C. Gill, president, and Edwin G. Baker, chairman of the board, reported that new records had been made in new business, business in force, assets and surplus. A gain was also made in interest earnings. For the 12th consecutive year new business produced by the field organization showed an increase.

Sterling currency items are included for both 1952 and comparisons with other years on the basis of \$2.80 for the pound sterling. This is a change from the \$3.08 rate used a year ago.

New business totalled over \$193 million compared with \$179 million the previous year. The 1952 total includes \$175 million of life insurance and \$18 million of annuity business but excludes revivals, increased policies, dividend additions and reinsurance ceded to other companies.

It was pointed out that the company's sales of ordinary new life insurance in Canada showed an increase of 17 per cent over 1951 compared with an estimated industry average of around 10 per cent. Similarly, the company's gain in the United States was 34 per cent as compared with an industry estimate of 13 per cent.

Business in force now totals approximately \$1,720 million, made up of life insurance of \$1,490 million and annuity business of \$230 million. Gain for the year amounted to \$166 million, largest in the company's history.

"Our life insurance in force in Canada and the United States increased during the year by over 11 per cent which is considerably better than the results for the life insurance industry as a whole in the two countries," it was stated.

ON THE ALLEYS

New Records Set in Mixed 5-Pin League

Two new season records were established in the mixed five pin bowling league last week.

Broadway Cafe set a new single game score of 1,405 and a high three of 3,771 in "A" League and Bob Shearer set a new high three mark of 805 in "B" League.

In "A" division, Johnny Comadina scored high game of 346 and Vivian Wrathall topped the women with a high single of 288. Joy Bradley, with 752, had high three.

Claude Sanderson, for the third week in a row, topped the women bowlers in "B" division with a three-game score of 649 and Jordis Hill rolled high single of 268.

Jerry's had high game of 1,167 and also high three of 3,158.

Results:
"A" League—Oceanview Hotel 4, Miller Bay 0; Cook's Jewellers 4, 99 Taxi 0; Headpinners 3, Penguin Hobby 1; Shenton's 3, Orphans 1; Fashion Footwear 2, Broadway Cafe 2; Canada Life 2, Pushovers 2.

"B" League—Jerry's 4, Northern Glass 0; Jersey Farms 4, Booth School 0; Acme Clothiers 3, Thom Sheet Metal 1; Daily News 3, Hi-Jackers 1; Bulger's 3, Hill's Shoe Store 1; Harold's 2, Conrad Street School 2.

Standings:
"A" League—Headpinners 24, Broadway Cafe 23, Cook's Jewellers 22, 99 Taxi 18, Pushovers 18, Fashion Footwear 17; Shenton's 15, Canada Life 14, Penguin Hobby 13, Oceanview Hotel 12, Orphans 9, Miller Bay 7.

"B" League—Harold's 21, Jersey Farms 21, Jerry's 19, Northern Glass 19, Daily News 16, Thom Sheet Metal 16, Hill's Shoe Store 15, Acme Clothiers 14, Bulger's 14, Booth School 14, Conrad Street School 12, Hi-Jackers 11.

The Mayoralty of London, England, dates back to 1189 when Henry Fitzallwin was first mayor.

Fred E. Dowdie
OPTOMETRIST
Room 10, Stone Building
Phone Blue 593

Try Daily News Want Ad:

Extra Washroom Extra Comfort

Do you have "bathroom line-up" in your home... do you have to wait your turn when your family comes in from work or play? Avoid this nuisance by installing an extra washroom. The cost is amazingly low... the convenience immense. Call us.

PHONE 174

YOUR PLUMBING IS OUR JOB

Smith & Elkins LIMITED
P.O. Box 274

HANDYMAN HOME SERVICE

Painting and Decorating

General Contractors

Building and Repair of all kinds.

P.O. Box 1670 Phone Red 894

GRANTHAM Electric Electrical Contractors

★
NEW CONSTRUCTION

★
REWIRING OLDER BUILDINGS

844 Summit Phone Blue 293

NORTHWEST CONSTRUCTION LTD.

GENERAL CONTRACTORS

P.O. Box 1381 Prince Rupert

COMMERCIAL - INDUSTRIAL - DOMESTIC CONSTRUCTION and MAINTENANCE



HOCKEY NIGHT AT "THE GARDENS"

It's a sports tradition in Toronto... Saturday Night's N.H.L. hockey game at the famous Maple Leaf Gardens... when the keen, enthusiastic crowd cheer on the great performers who give spectacular pace and colour to Canada's national game.

Where a fine car matters... Monarch belongs

If you're the kind of person who responds to the excitement of a great performance, then you'll be truly enthusiastic about the brilliant new Monarch for 1953. From the clean lines of its handsome body to the high-fashion smartness of its smallest accessory, the new Monarch is a picture of planned perfection. See this magnificent car at your Monarch dealer's... look at the sweep of glass that means picture-window visibility for driver and passengers alike. Feel the eager response of Monarch's precision-built V-8 engine—in crowded city traffic or on the broad, straight sweep of the open road! The superb new 1953 Monarch is on display in your Monarch dealer's showroom now. See it... drive it... and you'll know, beyond a doubt, that where a fine car matters, Monarch belongs!



Ride like a King in a **1953 Monarch**

SEE YOUR MONARCH DEALER

BOB PARKER LTD.

FORD-MONARCH DEALERS

Prince Rupert, B.C.

LOOK FOR THE **A-1** SIGN OF VALUE WHEN YOU BUY A USED CAR—SEE YOUR MONARCH DEALER