

GUESS THE WEATHER CONTEST

No. 2

\$25.00 A WEEK if you can **GUESS THE WEATHER**

ALL YOU HAVE TO DO IS:

● Fill in the coupon at the bottom of the page, giving your estimate of the average high and average low temperatures for the week **February 28th to March 6th inclusive** and drop it into the ballot box at Super Valu.

RULES AND INSTRUCTIONS:

1. The contest runs for six weeks with a \$25.00 winner every week. Successive contests will appear each Thursday.
2. Official Weather Bureau records at Digby Island will be the basis of determining the winner.
3. The person closest to the exact average, to a decimal point (or points), will be declared the winner.
4. In the case of ties, the winner will be determined through a question set by the judges.
5. Entries received by mail will be disqualified . . . PLEASE DO NOT MAIL THEM.
6. Coupons covering each successive contest will be plainly marked to show the week for which averages are to be given, and the date by which entries must be in our Ballot Box.
7. Contest entries will be judged for correctness on the basis of high and low temperature averages only.

The Average High and Low Temperature For the Week of Feb. 28 to March 6 Incl.

NAME	DATE	HIGH	LOW
.....	Sunday 28th
.....	Monday 1st
ADDRESS	Tuesday 2nd
.....	Wednesday 3rd
PHONE (if any)	Thursday 4th
.....	Friday 5th
.....	Saturday 6th
AVERAGE (Divided by 7)	

Place this entry in the ballot box at SUPER-VALU before 6 p.m., Saturday, February 27th

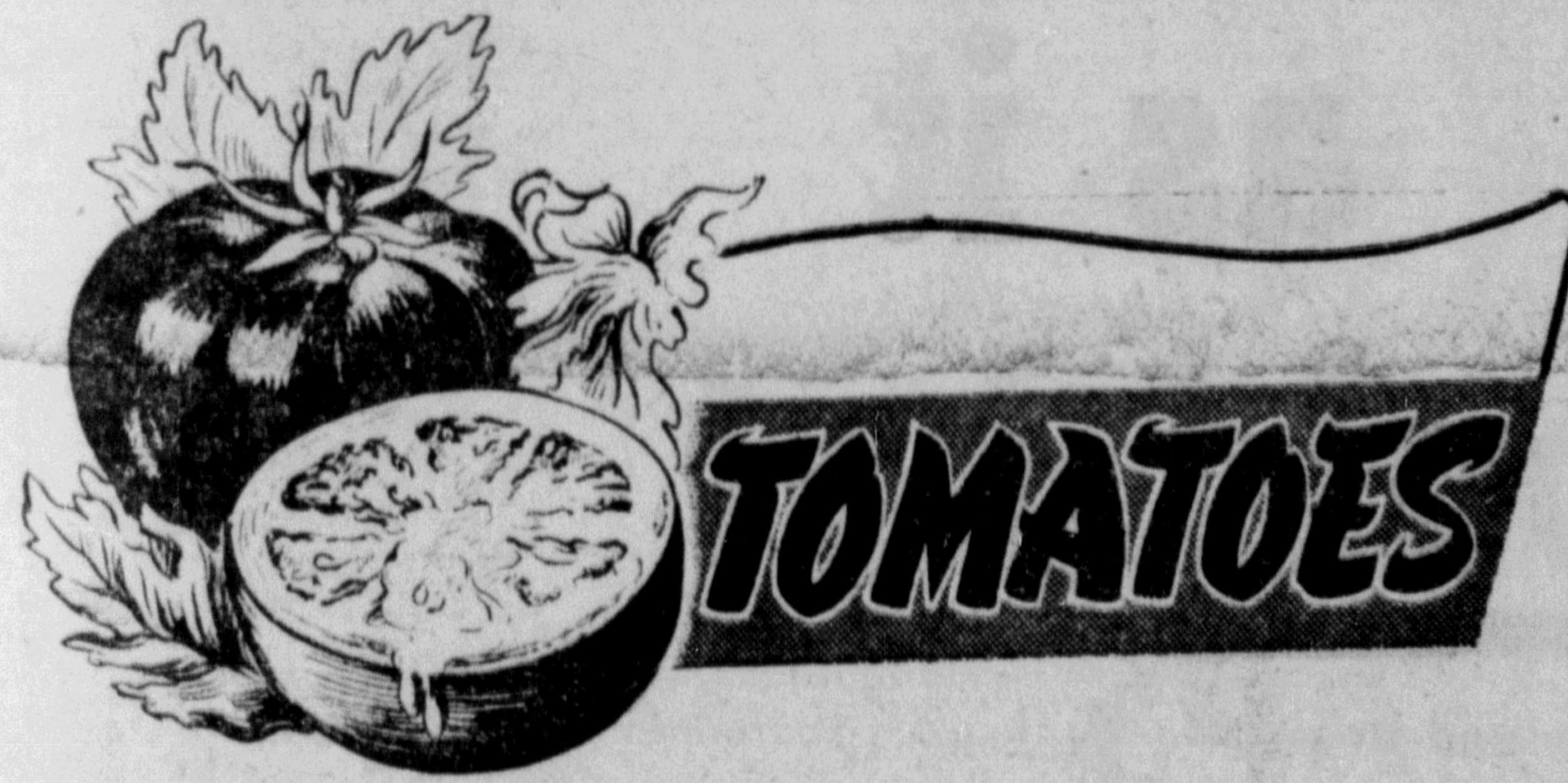
Hard to Predict The Weather BUT ANYONE CAN PREDICT LOW PRICES at Super-Valu

WINNERS OF CONTEST NUMBER ONE WILL BE ANNOUNCED IN THE DAILY NEWS TUESDAY, MARCH 2nd

SUPER-VALU FOOD STORES

- PEAS BRENTWOOD, Size 5, 15-oz. TIN 10c
- PREM SWIFT'S TIN 29c
- DOG FOOD ROVER TIN 10c
- BABY FOODS HEINZ 3 TINS 25c
- PLUMS NABOB, Choice, 15-oz. TIN 11 1/2c
- GREEN BEANS DEWKIST, Choice, 15-oz. TIN 12 1/2c
- Jelly Powders NABOB They set fast 3 PKT 25c
- SALMON KETA, Fancy Quality Make a Fish Dish 1/2-Lb. TIN 15c
- CORN ROYAL CITY, Golden Cream, 15-oz. TIN 15c

- TWO EXTRA MEAT BUYS**
- No. 1 VEAL ROASTS Swift's, Boneless lb. 55c
 - No. 1 PORK BUTT ROASTS lb. 63c



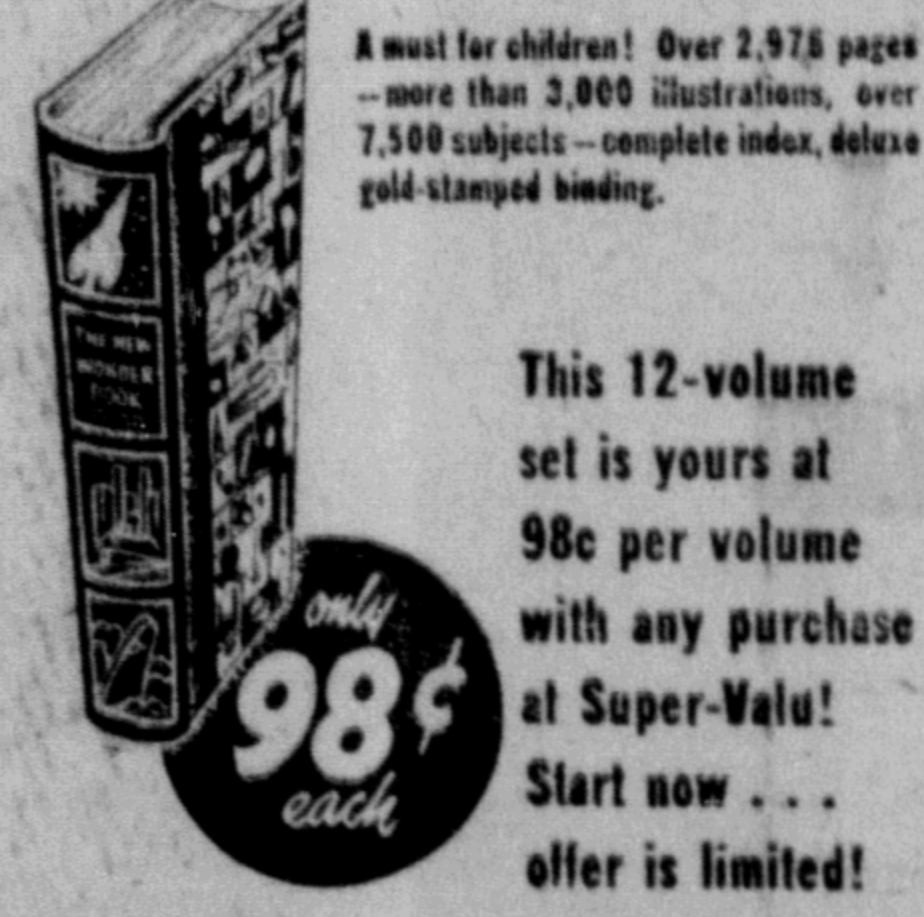
- TOMATOES Ripe, Red and Firm—Tube 25c
- GRAPEFRUIT Medium Size 4 for 25c
- LETTUCE Extra Large 2 for 33c
- AVOCADOS each 21c
- BANANAS 2 lbs 45c
- PEARS Fancy Flemish 40 lb. box \$2.79
- POTATOES Drybelt 10 lbs 35c
- PEAS GIANT Pkt. 67c

It's the best 98cents our family ever spent



You're sure to want every volume of

THE WONDER BOOK OF KNOWLEDGE



98c each

SUPER-VALU

Buy BEEF

- BRISKET BEEF lb. 25c
- HAMBURGER Fresh Ground lb. 35c
- BLADE ROASTS lb. 47c
- STEW BEEF Lean lb. 49c
- CROSS RIB ROASTS lb. 52c
- STANDING RIB ROAST lb. 57c
- ROLLED RIB ROASTS lb. 69c
- ROUND ROASTS BONELESS lb. 69c
- GROUND ROUND STEAKS lb. 69c
- T-BONE STEAKS lb. 69c
- RIB STEAKS lb. 69c
- SIRLOIN STEAKS lb. 69c
- 1st. Cut RUMP ROASTS lb. 63c
- SIRLOIN TIP ROASTS lb. 69c
- SHELL BONE ROASTS lb. 59c

All our Beef is Top Quality Government Graded and Trimmed Waste Free

IT'S "BEEF" WEEK AT SUPER-VALU

Take advantage of these low prices on BRANDED BEEF