

STRIDE BY STRIDE THE G. T. P. IS FORGING AHEAD

IS VISITED BY TERRIBLE FIRE

1,000 Persons Homeless in Chicoutimi Today—One Man Reported Killed, Many Injured—City Hall and Cathedral Burn.

(Special to Daily News.)
Quebec, June 25.—Fire that broke out at 10 o'clock yesterday morning destroyed 125 buildings in the town of Chicoutimi, including the town hall, the cathedral, the two largest hotels, stores and dwelling houses and as a result 1,000 persons are homeless. It is reported, but not verified, that one man was killed and several injured. Not until 6 o'clock last night were the flames under control.

REGULAR FEAST OF DEATH

Eight Come to Violent End in Middle West.

(Special to Daily News.)
Calgary, June 25.—Since Sunday afternoon no less than eight persons have died violent deaths in Manitoba, Saskatchewan and Alberta from shooting, drowning, electrocution and other accidents. A teller in the Dominion Bank at Saskatoon named Gillespie shot himself at noon today.

THE FORGOTTEN WAR

Italy Has Agreed to Conference—Armistice Likely.

London, June 24.—Italy has agreed to a conference of the powers for a settlement of the war with Turkey, according to the Daily Express from Rome. If Turkey is willing, an armistice will be speedily arranged.

Panorium Pioneer Cleaners.
Phone 4.

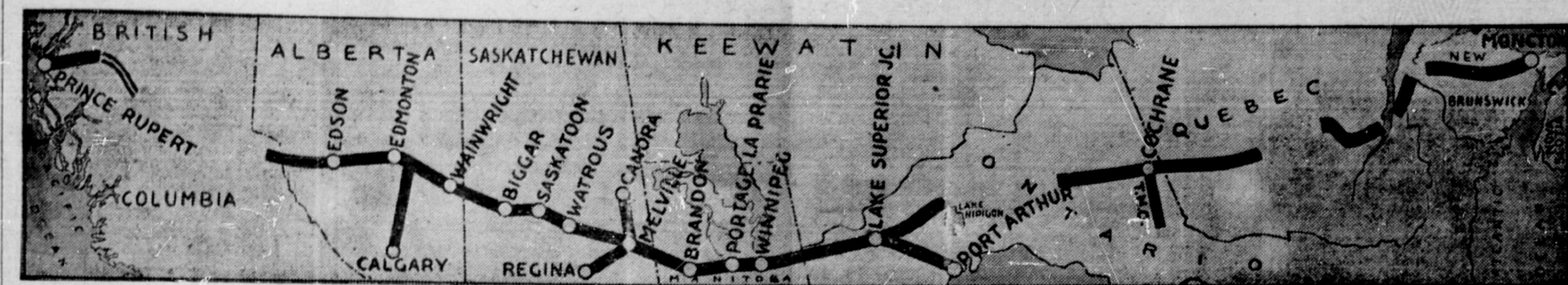
INJURED MAN HAS LONG WAIT FOR AMBULANCE TO ARRIVE

ALFRED HAY FELL FROM SCAFFOLDING SUFFERING INJURIES TO BACK—FIRST AID WAS PROMPTLY RENDERED, BUT PATIENT DID NOT REACH WARD FOR AN HOUR.

An accident occurred yesterday afternoon to a workman named Alfred Hay who was employed on the Angle building on 8th avenue. Hay was mounting a scaffolding for some purpose, not aware of the fact that the structure had been partially dismantled. A plank slipped and he was precipitated a distance of some fifteen feet. His back was caught by a beam, which partially broke his fall, but the blow sickened him and he was taken up suffering considerably.

Suspecting that Hay was seriously hurt, helpers at once sent for the ambulance and summoned Dr. Eggert by phone. Dr. Eggert was soon in attendance and rendered first aid, ordering the man's removal to the general hospital as soon as possible. It was expected that the ambulance would arrive in a few moments, but the minutes passed and the injured man, lying on the veranda of a house close to the scene of the accident momentarily anticipating his removal to the hospital, waited in vain for its swift coming. Not for close on an hour

STRENGTH OF SIX THOUSAND MEN RUSHES LINE IN WEST



More than 85 per cent. of the work of the National Transcontinental line between Winnipeg and Moncton is now completed and the road between Winnipeg and Prince Rupert should be completed next year.

The total mileage between Winnipeg and Moncton is approximately 1,805 miles. Between the two cities there has been laid to date by the railway company, including sidings, 1,475 miles of steel. In addition much grading has been done on which the steel will be laid at an early date.

The Way to the 'Peg.
The mileage between Winnipeg and Prince Rupert is also approximately 1,800 miles. Between Winnipeg and Edmonton, approximately 900 miles, there has been built a roadbed of the highest character and the trains

have been in operation for a long period. West of Edmonton there is steel for a distance of 250 miles, then a gap of 410 miles, then a grade of 140 miles, and then steel for 100 miles into the City of Prince Rupert. That the new road will be completed from coast to coast in time for the anticipated visit of the King in 1914 appears to be absolutely certain, and it is hoped that His Majesty may be able to make the journey across the continent in a royal train on the new "All Canadian" line.

1,475 Miles of Steel.
Between Winnipeg and Moncton, the distance between the two cities being 1,805 miles, there is thus 1,475 miles of steel, including sidings. Including the terminals there is 1,550 miles of steel between the two cities. Taking the work as a whole, the engineers estimate that 85 per

cent. is completed. Of the remaining 15 per cent a portion is of such a character that proportionately more time will be required to finish it than was required for the 85 per cent. which has been completed.

The condition of the western section of the road between Winnipeg and Prince Rupert is well known to western people.

West of Edmonton all the work that remains to be done is under contract. Foley, Welch & Stewart will build the grade and will complete their contract in 1913. The company has an extraordinary equipment, equal to the best, and ample capital for any undertaking.

Between Winnipeg and Edmonton there is in operation a line the equal of which was never built on first construction on the continent. This portion of the road has been so long under op-

eration that it is now regarded as an established institution of the west. Beyond Edmonton there is a stretch of approximately 900 miles to the coast. On this division there is 250 miles of steel between the city and the summit of the mountains. Then there is a gap of 410 miles where the grade is still to be built. On what is known as the west end there are nearly 200 miles of steel and in addition more than 140 miles of grade.

6,000 Men at Work.
On the construction of the main line of the G. T. P., from Mile 28 west of the summit to Mile 53, there are at work no fewer than 6,000 men blasting the right of way through the mountains, grading the track and laying the ties for the railway.

By July 1st, according to the forecast of the sub-contractors of Foley, Welch & Stewart, the

steel will be laid as far as Tete Jaune Cache, at Mile 53, B. C. Before the road can be completed to this point the contractors must finish the tunnelling from Mile 47 to a point 2,000 yards west. Here is the heaviest work on the whole grade, and from 1,500 to 2,000 men have been engaged for months on the task of blasting a tunnel through the solid rock part. This undertaking accomplished, the contractors will make fast headway.

24 Steam Shovels.
Throughout the summer months 24 steam shovels will be at work between Tete Jaune Cache and Fort George. Sub-contractors state that the actual amount of grading done and the mileage of steel laid will, as the close of the present season, be greater than the accomplishment of either of the two preceding years.

ROOSEVELT TO BE INDEPENDENT

His Supporters Refuse to Vote at Convention at Which Taft Secures the Nomination—Independent Convention Soon.

Roosevelt has accepted the nomination for the office of president on an independent ticket in the dying hours of the Republican national convention, in which he met signal defeat.

The vote for the presidential nomination of the party stood as follows:

Taft	561
Roosevelt	107
Lafollette	41
Cummings	17
Hughes	2

Roosevelt's supporters, 350 in all, intend to hold a national convention, when Roosevelt will be formally nominated.

Coming to Rupert.
Ottawa, June 25.—When the Hon. F. Cochrane, minister of railways, goes west in the near future he will pay a visit to Prince Rupert for the purpose of looking over the Grand Trunk Pacific Railway.

"Always Reliable" (?)
C. V. Evitt of the Mack Realty Company will be married this afternoon to Winnifred Frost, late of England, at the residence of Mr. and Mrs. Mortimer. — Evening Empire, yesterday.

The wedding of Miss Winnifred Frost to Mr. C. V. Evitt will take place tomorrow (Wednesday) afternoon in the Anglican Church of St. Andrew, the event to be solemnized by the Rt. Rev. the Bishop of Caledonia.

WHAT THE COUNCIL DID LAST NIGHT

Talked from 8 p. m. until 4 a. m.
Granted permission for erection of a stable on Ninth avenue.
Left request for use of the empty library in the city hall for band practice to be settled later by a committee.
Planned to take a plebiscite of city employees on question of contract system for the general hospital.
Placed the management of the cemetery in the hands of Parks Commission, lots to be on sale shortly.
Referred to Board of Works matter of proposed strong resolution to impress on the G. T. P. the need for settling site hitch over Federal buildings.
Held prolonged discussion over Second avenue sewer trouble introduced by delegation headed by D. H. Hays, and after much motion and counter motion decided to consult property owners of Section 1 about it.

PRINCE RUPERT'S FIRST PIERROT SHOW A SUCCESS

Immensely Attractive Entertainment Staged in the Westholme Theatre Last Night in Aid of the Rowing Club—Pretty Faces, Figures, Feet and Voices—Lend Themselves Effectively in Merry Song and Chorus—The Boys Help

Every promise of the rehearsals of Prince Rupert's first pierrot show was made good on the stage of the Westholme Theatre last night before a big crowd. From the opening chorus, the charming sextet from Florodora, to the finale, "So Long, Mary," the pierrots pleased their patrons. And equally pleasing were the interludes. The splendid sketch, "The Penultimate Test," in which Mrs. Chisholm and Mr. Frank Ellis occupied the stage, was appreciated to the full, and the concluding Japanese poem play with its pretty girls and most marvelously made-up poet proved a success also in spite of its trying place at the far end of the program. In this play the Misses Jewel Garton, Annie Brown and Margaret Macdonald displayed personal charm and histrionic talent of excellent merit. Mr. Ellis took the poet's part splendidly. The two dramatic pieces were arranged by Mrs. Chisholm.

Pierrots' Concert.
A prettier stage effect than appeared when the curtain rose on the Pierrots has never been seen in Prince Rupert. The bizarre costumes suited their wearers to perfection. In solo, duet and chorus the pierrots proved first rate entertainers. Miss Helen Hawley with Mr. Tracy gave a dainty duet, the pretty pierrette receiving a handsome bouquet at its close. Miss Vera Lockhart's "Teach Me How to Swim," with Mr. Garra's tuneful and expressive responses from a side box, was a distinct success. Mr. Stowell's "Ship Ahoy" and "Yip Yaddy" went right home to the crowd, who demanded "Down the Strand," which they had to do without for encores had to be strictly curtailed owing to the fullness of the program. "Half Past Two" and "So Long, Mary" in duet in the first and full chorus by Miss Hawley, with Mr. Tracy, in the last song were splendid. Mr. J. W. Chapple, whose consistent hard work maintained the organization of the pierrots, sang capably "The Bassoon," "The Six Little Wives" (with chorus) from "San Toy," and an amusing duet, "Quarrelling," with Mrs. N. Mackintosh.

Whitley's song and recitation were well appreciated, as were his sallies. Immense credit is certainly coming to Mr. L. Grippen, who though suffering from a painful eye strain, nobly covered his optic with an effectively "illustrated" patch and took his part in the chorus splendidly, also singing "De Picaninies" duet from "The Runaway Girl" with Mrs. N. Mackintosh, and a thoroughly effective solo. "Grip" was one of the most popular pierrots of the group. The pretty "Cigarette" solo with chorus, from "The Runaway Girl," was sung by Mrs. Mackintosh and pleased. Mention must certainly not be forgotten of Mr. Werner, the accompanist, whose capable sympathetic work went far to further the success of the show, and the advantages of the pretty Westholme Theatre were apparent.

Sailors' Boys' Challenge.
A match has been arranged between the Grand Trunk steamer Prince Rupert's crack football team and the Calles for next Saturday, played on Second avenue. Kick off at 8 p. m. sharp.

TRAPPER KILLED, BEAR FREE; RAGS, BONES AND BLOOD FOUND

TRAGEDY OF THE BUSH REVEALED IN TARDY MANNER—"SLIM" LYNCH, WELL KNOWN WESTERN HUNTER, MEETS DEATH IN MYSTERIOUS MANNER.

Lethbridge, Alta., June 22.—Shot down by a gun he had set for a bear, then falling prey to the animal and being torn to pieces while crawling to his cabin is believed to be the fate of "Slim" Lynch, a trapper, living near Okamina, B. C.

A special despatch to the Lethbridge Herald from Okamina says: "Word was brought into the Royal Canadian oil camp by two trappers that one of their party, 'Slim' Lynch, was missing and had been for two weeks, exact dates not being available. A hurried search revealed no signs except that parts of the clothing of the missing man were on the floor of the old cabin in which he was stopping. His gun was also gone. The searchers, after coming onto the oil camp and not finding him there, returned and reported to his friends along the Flathead trail.

"Another party set out and upon arrival at his cabin made a thorough search with the result that his overalls were found to have a bullet hole through them, near the waist line, and also a pocket handkerchief badly stained. A further search revealed the

revolver or automatic loading pistol set for a bear and with two empty shells lying beside it. Finally, some distance from the cabin was discovered parts of an arm and large bones and the upper part of a skull, all the rest being eaten up.

"It is believed that he had set the gun for a bear, and hearing a shot fired left the cabin and went to the trap, forgetting the auto loading gun and exploding it the second time with fatal results. 'Slim' had dragged himself to the cabin and tried to stop the flow of blood with his handkerchief twisted up, but evidently died on the floor. Some time after the accident the bear came in and dragged the body outside and devoured it, with the exception of the few remaining parts found, which were collected and buried.

"There is no exact date except that it was some time between May 3rd and June 4th. The trapper, 'Slim' Lynch, was a single man so far as can be learned and had been in the Spanish-American war and had trapped for the last two years along the Flathead."

PRINCE RUPERT TWENTY MINUTES AGO

Suggested that a set of good going gramophones wound up for five hours should be included in the city hall furnishings. Rumored that Prince Rupert's ambulance has entered for the tortoise race on Dominion Day.
"Grip" says the lady on the sandy beach must have had a box of those self lighting cigarettes.
Just hinted that Prince Rupert's "Yen How" may probably want to add those dainty kimono girls to his list as "reserves."
Merely Mabel says it just tickles her to death to think that Prince Rupert's boys and girls can get up a better show than was ever brought into the city.

THE DAILY NEWS

THE LEADING NEWSPAPER IN NORTHERN BRITISH COLUMBIA
Published Daily and Weekly by
THE PRINCE RUPERT PUBLISHING CO. LTD., PRINCE RUPERT, B.C.

TRANSIENT DISPLAY ADVERTISING—50 cents per inch. Contract rates on application.

SUBSCRIPTION RATES—To Canada, United States and Mexico—DAILY, 50c per month, or \$5.00 per year, in advance. WEEKLY, \$2.00 per year. All Other Countries—Daily, \$8.00 per year; Weekly, \$2.50 per year, strictly in advance.

HEAD OFFICE

Daily News Building, Third Ave., Prince Rupert, B. C. Telephone 98.

BRANCH OFFICES AND AGENCIES

NEW YORK—National Newspaper Bureau, 219 East 23rd St., New York City

SEATTLE—Puget Sound News Co.

LONDON, ENGLAND—The Clougher Syndicate, Grand Trunk Building, Trafalgar Square.

SUBSCRIBERS will greatly oblige by promptly calling up Phone 98 in case of non-delivery or inattention on the part of the news carriers.

DAILY EDITION.

TUESDAY, JUNE 25

AMBULANCE OR HEARSE?

A man was hurt yesterday. He fell fifteen feet from a scaffolding which had been partly dismantled without his knowledge. His body struck a beam as he fell and his back seemed pretty badly hurt. Internal injuries were feared by those who did their best to ease him while a doctor, unassuming but ever swift in time of accident, was speeding in response to their summons. The ambulance was sent for; meantime the doctor was rendering skilled first aid. The patient lay on the veranda of a residence and never was the term "patient" better applied. For an hour and a half, injured as he was, he lay waiting, waiting, waiting for the arrival of the ambulance, which had been summoned almost as soon as the accident happened.

OPTIMISTS; HOW MADE.

Letters are appearing constantly in the British press, some of them praising the Dominion highly and some of them criticizing the country, the climate, the people, our habits and customs, and all else. Those who write letters to the newspapers across the pond no doubt speak well of all of the country according to the measure of their success here. No doubt they all came with high hopes and many of them meet with very severe discouragements at first, before they have learned to adjust themselves to strange conditions, or, to put it another way, before they have the luck to fit in somewhere. After that they write as optimists.

INDEPENDENT PRINCE RUPERT.

Six hundred miles at least of sea travel separate the citizens of Prince Rupert from the nearest sub-centre of metropolitan amusements in the theatrical and musical world. Thousands of miles of land and sea lie between our city and the magnetic poles of music and the stage—New York and London. It costs a small fortune at present to bring even a small stock company here with a series of shows. But is Prince Rupert therefore perturbed? Is our city in consequence barren of charming theatrical and musical entertainment? Not at all! Witness "Our Regiment"; witness amateur night; witness "At Breezy Point"; witness a recent cantata; witness last night's pierrot show, prepared, rehearsed and successfully staged in less than three weeks.

606 3rd Ave.

Phone 379

TRY US FOR

Graniteware, Tinware, Crockery, Glassware, Chinaware

Headquarters for Camping and Batching Outfits

SATURDAY SPECIAL

Full Dinner Sets \$10 Up

CARRIGAN & MILLER

Prices Always Right

We Deliver

LYNCH BROS.

General Merchandise

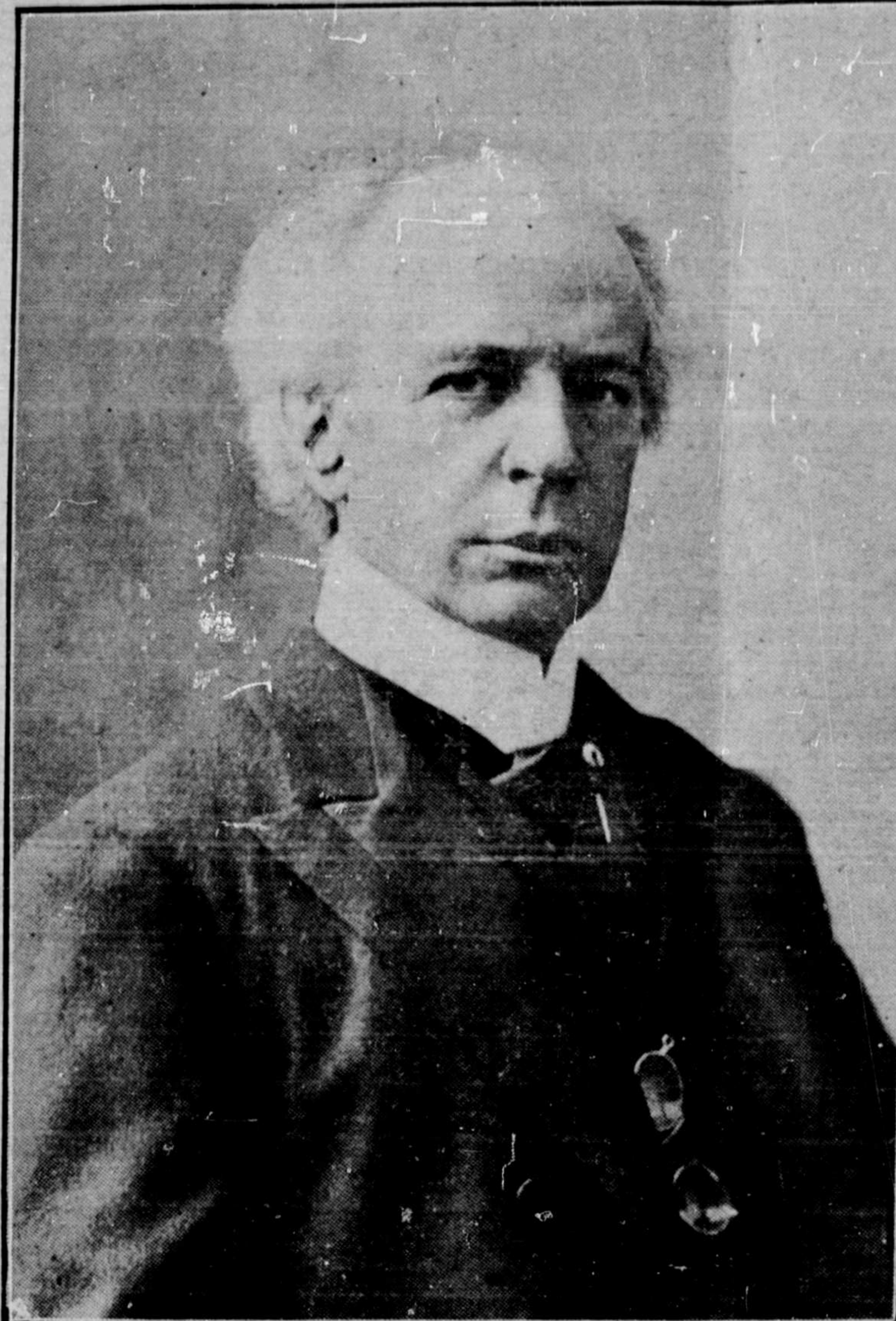
Largest Stock

Lowest Prices in Northern B. C.

Rose's Lime Juice Cordial
The Best
Procurable. Absolutely pure

Find It Through a News Want Ad.

SIR WILFRID LAURIER



That was a great outburst of Laurierism in Montreal the other night. The "Old Man," as the whips call him affectionately behind his back, was in the best of form, and stood before the six hundred guests as fine a figure as any of them, his shoulders straight, his eyes clear, his voice strong. It was less Liberalism that thrilled them than the sight of Laurier. It is marvellous to see this man, the son of French villagers, of delicate physical appearance, with a spiritual face, with a mild voice, gentle gestures, and without a single one of the bluff, human qualities

The modern, high class place for billiards and pool. Seale's, Third avenue.

Delicious ice cream at Keeley's.

THE WIGGLY ONES

Freak Dancing Will Pass Declare Dancing Masters.

Chicago, June 22.—Oblivion awaits the "Bear Cat," the "Grizzly Bear," "Texas Tommy," "Boston Dip," "Turkey Trot" and kindred present day departures from the stately dance of thirty years ago, declared the International Association of Masters of Dancing, in session here.

"A limb has been amputated from the redowa, and we will call it a waltz," asserted a Chicago dancing master, addressing the convention. "We dismembered the polka and called it a two-step. It requires a vivid imagination to portray what we have done to the beautiful and graceful dances of the past to produce the hideous present day contraptions."

Style

"The contract, as announced some time ago in the Empire it would be, has been awarded to Foley, Welch & Stewart."

**MISSING! THIS MAN
SUPPOSED CASE OF
FORGOTTEN IDENTITY**



From a hotel in Winnipeg, this man, George G. Mannlicher, wandered two weeks ago in, it is believed, the peculiar state of mind caused by the absolute loss of all memory of his identity. A man answering to his description was seen shortly afterwards boarding a westbound train.

W. L. BARKER

ARCHITECT.

Three different sizes of wood hoists.
Phone 89 Second Ave.

H. Gordon Munro W. Nicholson Lailey

MUNRO & LAILEY

Architects,
Stork Building, Second Avenue.

STUART & STEWART

Accountants

309 2nd Ave. Phone No. 280
Prince Rupert P. O. Box 351
Auditors for City of Prince Rupert

ALFRED CARSS, C. V. BENNETT, B.A.
of British Columbia, of B.C., Ontario, Saskatchewan, and Alberta Bars.

CARSS & BENNETT
BARRISTERS, NOTARIES, ETC.
Office—Albert Block, Second Avenue.

WM. S. HALL, L. D. S., D. D. S.

DENTIST.

Crown and Bridge Work a Specialty.
All dental operations skillfully treated. Gas and local anæsthetics administered for the painless extraction of teeth. Consultation free. Offices: Helgeson Block, Prince Rupert.

Alex. M. Manson B.A., W. E. Williams, B.A., L.L.D.

WILLIAMS & MANSON

Barristers, Solicitors, etc.

Box 285 Prince Rupert, B.C.

P.O. BOX 28 PRINCE RUPERT

JOHN E. DAVEY

TEACHER OF SINGING

PUPIL OF WM. FOXON, ESQ., A.R.A.M., LON., ENG

JOHN DYBHAVI

Real Estate—Loans and Insurance

319 3rd Avenue Phone 384

HAYNER BROS.

UNDERTAKERS AND EMBALMERS

Funeral Directors

3rd Ave. near 6th St. Phone No. 86

E. L. FISHER

Funeral Director and Embalmer

CHARGES REASONABLE

THIRD AVENUE PHONE 356.

OPEN DAY AND NIGHT



Prince Rupert Lodge, I.O.O.F.
No. 63

Meets in the Helgeson Block

Every Tuesday Evening

All members of the order in the city are requested to visit the lodge.

A. DOUGLAS, N. G.

W. G. BARRIE, Sec.

"Valhalla" of S.H. & E.F.
(SCANDINAVIAN SOCIETY)

Meets every 2nd and 4th Tuesday at 8 p.m. in the hall at 319 3rd Ave.

SONS OF NORWAY

Meets 1st and 3rd Thursdays at 7 p. m., at 319 3rd ave. All Norwegians are welcome.

HAND LAUNDRY

Hand cleaning and pressing. Best care of silk dresses.

Capt. Joseph Janders

LINDSAY'S CARTAGE and STORAGE

G. T. P. Transfer Agents

Orders promptly filled. Prices reasonable.
OFFICE—H. B. Rochester, Centre St. Phone 68.

SMITH & MALLETT

THIRD AVE.

Plumbing, Heating, Steamfitting and Sheet Metal Work
Office: 3rd Ave. Workshop
Phone 174 2nd Ave. bet. 7th and 8th Sts

NOW....

That we have more front on 2nd avenue, we are able to display our large stock of beautiful oak furniture and some of our upholstery, curtains, drapery, etc. See our show windows at the Big Furniture Store. Linoleum, Stoves and Lamps on the 6th street side; Crockery and kitchen needs on the 2nd avenue. Entrance front.

F. W. HART

CORNER 6TH ST. AND 2ND AVE.

PRINCE RUPERT FEED CO.

Big stock of all kinds of Garden Seeds, Timothy, Clover and Grain Seeds.

Mail Orders Promptly Attended to.

Agents International Stock Food.
—ALL KINDS OF FEED—

Silversides Bros.

The up-to-date House Decorators of Prince Rupert

**..Sign Writing..
Paper-Hanging**

Our Specialties

WE ORIGINATE. OTHERS IMITATE

2nd Street Phone 156 Green

Your Success-Meter

Regard your B.N.A. Savings Bank Book as a sort of meter which records plainly your progress toward prosperity.

There are hundreds of these

Bank of British North America

success-meters in the homes around you. Is there one in your home? If not we will gladly provide one.

76 YEARS IN BUSINESS

Capital and Reserve Over \$7,500,000

**Prince Rupert Branch,
F. S. LONG, Manager.**

Georgetown Sawmill Co. Ltd.

Lumber

and

Mouldings

A large stock of dry finishing lumber on hand. Boat lumber a specialty. Delivery made at short notice.

Our prices are as low as any. Call on us before ordering.

OFFICE:

**EMPRESS THEATRE BLDG.
Cor. 6th St. and 2nd Ave.**

Sixth Ave.—Best Buy in City

Lots 7 and 8, Block 22, Section 7, 6th avenue, \$700 each; 1/2 cash, 6 and 12 months, or \$650 each cash.

H. DOUGLAS

339 Third Ave. P. O. Box 606
(Opposite Post Office)

Prince Rupert Dairy

FRESH MILK & CREAM DAILY
Guaranteed Pure

No Shipped Stuff Phone 287

—THE—

Westholme Lumber Co.

—LIMITED—

Lumber and Mouldings

All Kinds of Building Supplies

First Avenue Phone 186

IF YOU WANT TO SEE

The finest Range ever produced in Canada call at Fred Stork's Hardware and inspect the New Chancellor. You will say that it is the best you have ever seen and it is just as good as it looks.

**STORK
SELLS
TOVE**

COAL

New Wellington Coal. Best on the Coast

Phone 116 Rogers & Black

For Kitsumkalum or Lakelse

Fruit Lands

write or call on the

Terrace Land Co.

TERRACE, B. C.

COAL NOTICES.

Skeena Land District—District of Queen Charlotte Islands.
Take notice that I, William Watson, of the City of Prince Rupert, B. C., contractor, intend to apply for a license to prospect for coal and petroleum on and under the following described lands on the west coast of Graham Island:
Commencing at a post planted one mile east of the southeast corner of Coal Lease No. 7172, thence south 80 chains, thence east 80 chains to the place of commencement.
Dated this 22nd day of April, 1912.
Pub. June 3, 1912. WILLIAM WATSON.

Skeena Land District—District of Queen Charlotte Islands.
Take notice that I, William Watson, of the City of Prince Rupert, B. C., contractor, intend to apply for a license to prospect for coal and petroleum on and under the following described lands on the west coast of Graham Island:
Commencing at a post planted one mile east of the southeast corner of Coal Lease No. 7172, thence south 80 chains, thence east 80 chains to the place of commencement.
Dated this 22nd day of April, 1912.
Pub. June 3, 1912. WILLIAM WATSON.

Skeena Land District—District of Queen Charlotte Islands.
Take notice that I, William Watson, of the City of Prince Rupert, B. C., contractor, intend to apply for a license to prospect for coal and petroleum on and under the following described lands on the west coast of Graham Island:
Commencing at a post planted one mile east of the southeast corner of Coal Lease No. 7172, thence south 80 chains, thence east 80 chains to the place of commencement.
Dated this 22nd day of April, 1912.
Pub. June 3, 1912. WILLIAM WATSON.

Skeena Land District—District of Queen Charlotte Islands.
Take notice that I, William Watson, of the City of Prince Rupert, B. C., contractor, intend to apply for a license to prospect for coal and petroleum on and under the following described lands on the west coast of Graham Island:
Commencing at a post planted one mile east of the southeast corner of Coal Lease No. 7172, thence south 80 chains, thence east 80 chains to the place of commencement.
Dated this 22nd day of April, 1912.
Pub. June 3, 1912. WILLIAM WATSON.

Skeena Land District—District of Queen Charlotte Islands.
Take notice that I, William Watson, of the City of Prince Rupert, B. C., contractor, intend to apply for a license to prospect for coal and petroleum on and under the following described lands on the west coast of Graham Island:
Commencing at a post planted one mile east of the southeast corner of Coal Lease No. 7172, thence south 80 chains, thence east 80 chains to the place of commencement.
Dated this 22nd day of April, 1912.
Pub. June 3, 1912. WILLIAM WATSON.

Skeena Land District—District of Queen Charlotte Islands.
Take notice that I, William Watson, of the City of Prince Rupert, B. C., contractor, intend to apply for a license to prospect for coal and petroleum on and under the following described lands on the west coast of Graham Island:
Commencing at a post planted one mile east of the southeast corner of Coal Lease No. 7172, thence south 80 chains, thence east 80 chains to the place of commencement.
Dated this 22nd day of April, 1912.
Pub. June 3, 1912. WILLIAM WATSON.

Skeena Land District—District of Queen Charlotte Islands.
Take notice that I, William Watson, of the City of Prince Rupert, B. C., contractor, intend to apply for a license to prospect for coal and petroleum on and under the following described lands on the west coast of Graham Island:
Commencing at a post planted one mile east of the southeast corner of Coal Lease No. 7172, thence south 80 chains, thence east 80 chains to the place of commencement.
Dated this 22nd day of April, 1912.
Pub. June 3, 1912. WILLIAM WATSON.

Skeena Land District—District of Queen Charlotte Islands.
Take notice that I, William Watson, of the City of Prince Rupert, B. C., contractor, intend to apply for a license to prospect for coal and petroleum on and under the following described lands on the west coast of Graham Island:
Commencing at a post planted one mile east of the southeast corner of Coal Lease No. 7172, thence south 80 chains, thence east 80 chains to the place of commencement.
Dated this 22nd day of April, 1912.
Pub. June 3, 1912. WILLIAM WATSON.

Skeena Land District—District of Queen Charlotte Islands.
Take notice that I, William Watson, of the City of Prince Rupert, B. C., contractor, intend to apply for a license to prospect for coal and petroleum on and under the following described lands on the west coast of Graham Island:
Commencing at a post planted one mile east of the southeast corner of Coal Lease No. 7172, thence south 80 chains, thence east 80 chains to the place of commencement.
Dated this 22nd day of April, 1912.
Pub. June 3, 1912. WILLIAM WATSON.

Skeena Land District—District of Queen Charlotte Islands.
Take notice that I, William Watson, of the City of Prince Rupert, B. C., contractor, intend to apply for a license to prospect for coal and petroleum on and under the following described lands on the west coast of Graham Island:
Commencing at a post planted one mile east of the southeast corner of Coal Lease No. 7172, thence south 80 chains, thence east 80 chains to the place of commencement.
Dated this 22nd day of April, 1912.
Pub. June 3, 1912. WILLIAM WATSON.

Skeena Land District—District of Queen Charlotte Islands.
Take notice that I, William Watson, of the City of Prince Rupert, B. C., contractor, intend to apply for a license to prospect for coal and petroleum on and under the following described lands on the west coast of Graham Island:
Commencing at a post planted one mile east of the southeast corner of Coal Lease No. 7172, thence south 80 chains, thence east 80 chains to the place of commencement.
Dated this 22nd day of April, 1912.
Pub. June 3, 1912. WILLIAM WATSON.

Skeena Land District—District of Queen Charlotte Islands.
Take notice that I, William Watson, of the City of Prince Rupert, B. C., contractor, intend to apply for a license to prospect for coal and petroleum on and under the following described lands on the west coast of Graham Island:
Commencing at a post planted one mile east of the southeast corner of Coal Lease No. 7172, thence south 80 chains, thence east 80 chains to the place of commencement.
Dated this 22nd day of April, 1912.
Pub. June 3, 1912. WILLIAM WATSON.

Skeena Land District—District of Queen Charlotte Islands.
Take notice that I, William Watson, of the City of Prince Rupert, B. C., contractor, intend to apply for a license to prospect for coal and petroleum on and under the following described lands on the west coast of Graham Island:
Commencing at a post planted one mile east of the southeast corner of Coal Lease No. 7172, thence south 80 chains, thence east 80 chains to the place of commencement.
Dated this 22nd day of April, 1912.
Pub. June 3, 1912. WILLIAM WATSON.

Skeena Land District—District of Queen Charlotte Islands.
Take notice that I, William Watson, of the City of Prince Rupert, B. C., contractor, intend to apply for a license to prospect for coal and petroleum on and under the following described lands on the west coast of Graham Island:
Commencing at a post planted one mile east of the southeast corner of Coal Lease No. 7172, thence south 80 chains, thence east 80 chains to the place of commencement.
Dated this 22nd day of April, 1912.
Pub. June 3, 1912. WILLIAM WATSON.

HAZELTON TOWNSITE CASE RULING NOW SUSTAINED

Judgment of the Late Chairman Mabey of the Board of Railway Commissioners Which Has Been Upheld and Emphasized by the Board After the Re-Hearing Ordered by Borden Government

In view of the news received from Ottawa that the Board of Railway Commissioners have sustained their former ruling in regard to the location of the railway depot at the townsite of New Hazelton, known as the Kelly townsite, the principal points and expressions in the ruling of Judge Mabey are worth noting. It is reported that any modification made in this ruling is in favor of New Hazelton.

The Official Record.

The official record of the judgment given by the Railway Commission on the Hazelton townsite case shows that these were the members of the commission present at that hearing: Hon. J. P. Mabey, chief commissioner; D'Arcy Scott, assistant chief commissioner; James Mills, commissioner; and S. J. McLean, commissioner. The first sentence uttered by Judge Mabey in pronouncing judgment and making the order which the Borden cabinet has rescinded was this: "We are all of one opinion with reference to this matter."

Facts of the Case.

The judgment goes on to recite the facts of the case. The Grand Trunk Pacific Railway Co. entered into a contract with one Wheeler, who was the predecessor of Robert Kelly, of Vancouver, in title, by which it bound itself to locate its Hazelton station on lot 882, group 1, Cassiar district. The company in filing its location plan, showed the station grounds on lot 882. Subsequently there was correspondence between the company and the owner of the property, which Judge Mabey summed up as follows:

"Apparently the Railway Company were not able to get from the owner of the property a conveyance, as they were requesting a half interest in the land for a townsite. Later on the company decided to locate the station at some other point. The counsel for the Grand Trunk Pacific says that he does not know whether they obtained from the owners of Lot 851, to which they were proposing to move their station, a conveyance of the land there for a townsite, but in a copy of the Daily News-Advertiser, dated November 15th, the Grand Trunk Pacific is advertising for sale the land for a townsite on Lot 851. So, no doubt, they succeeded in getting from the owner of Lot 851 what the owner of Lot 852 refused to give them, and it does not require much knowledge of these affairs to justify the conclusion that, and that alone, was the moving cause in changing the location of the station or at least in attempting to change the location of the station from Lot 882 to Lot 851."

Only One Thing to Do.

Further on in the judgment Judge Mabey quoted an announcement by the G. T. P., headed "Notice to the Public," which said:

"The Grand Trunk Pacific townsite, South Hazelton, is situated on Lot 851, and it is the intention of the company to build a station on this townsite in the spring of 1912."

Said Judge Mabey: "The company in effect repudiate their agreement, and are advertising the lands for sale in a townsite in competition with what I presume he (Kelly) is trying to exploit on Lot 882, and on which they promised the public that a station will be built in the spring of 1912, within three or four months. Now it is perfectly apparent that there is only one thing to be done in this case."

"The company has got to carry out its agreement. It is a public scandal that a railway corporation should go about the country and obtain conveyances of this kind under false pretences."

Severest Censure.

"If a private individual had done what this company, through its officials has done, he would probably be landed in the penitentiary; at any rate, he ought to be in the penitentiary. The land was obtained through the grossest deceit on the part of the representatives of this company, and it is a breach of faith of the worst character that they should attempt to repudiate their contract."

"It is true that the time is not yet ripe for the construction of the station. The road is not built. It is not ready to open for traffic, but an order may go, requiring the Grand Trunk Pacific Company to construct and have ready for use by the public a station, the plans to be filed and approved by the board's engineer, on Lot 882, where it was intended originally to construct it. The station must be ready for traffic."

Solemn Contract Violated.

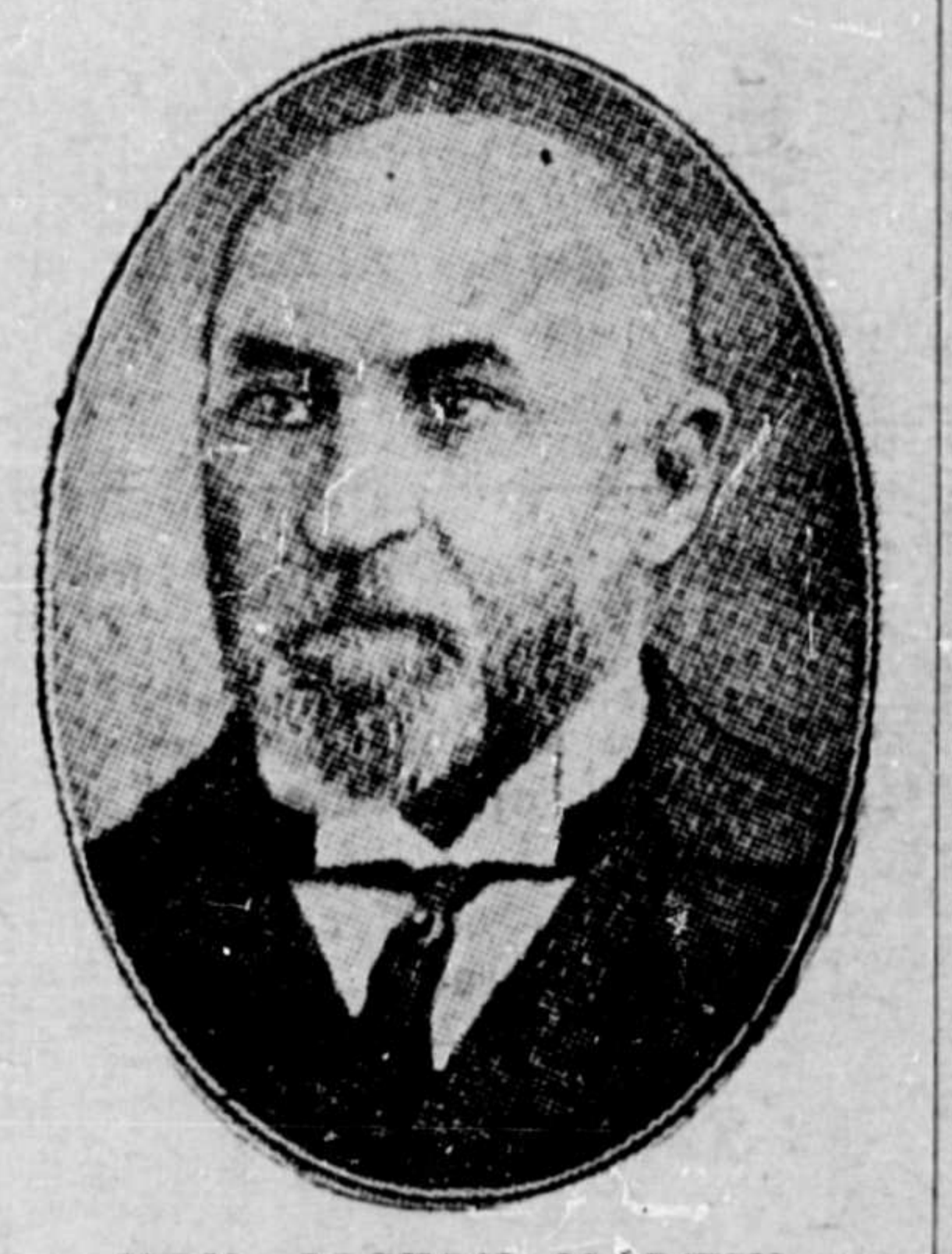
"An order may also go refusing the application that was filed with the board on the 11th of December for the location of station grounds and a station on Lot 851, and restraining the Grand Trunk Pacific Railway Company from the location of a station at that point. It is out of line of what they originally intended to do; it is done with bad motives, and it is done in violation of their solemn contract with the predecessor of Kelly in title."

Such is the official record of the judgment of the Railway Commission.

HON. JOS. MARTIN VOICES OPPOSITION TO IRELAND'S SENATE

London, June 22—In a debate in the House of Commons yesterday Hon. Joseph Martin supported the amendment to the Home Rule Bill, which suggested that the Irish politician should not have a Senate.

He declared that the reason Home Rule was popular in Can-



HON. JOSEPH MARTIN

ada was because of the appeals of popular Irishman like T. P. O'Connor. He would not support the bill unless it intended a purely local Irish Legislature. (Loud opposition cheers.)

John Redmond, who followed, completely ignored Mr. Martin's assertions on which he was subsequently taunted by Hon. Walter Long. The amendment was lost on a division by a majority of eighty-nine.

Best room in town at the Savoy.

IN THE MATTER OF THE Land Registry Act and IN THE MATTER of an application for a Certificate of Occupancy of Title in the name of EDWIN O. RUSSELL for the following lands—namely, the southwest quarter (S.W. 1/4) of Section Twenty-two (22), Township Twelve (12), Range Five (5), Coast District; the northeast quarter (N.E. 1/4) of Section Twenty-two (22), Township Twelve (12), Range Five (5), Coast District; the northwest quarter (N.W. 1/4) of Section Twenty-two (22), Township Twelve (12), Range Five (5), Coast District; the southeast quarter (S.E. 1/4) of Section Twenty-two (22), Township Twelve (12), Range Five (5), Coast District; the east half (E. 1/2) of Section Twenty-two (22), Township Twelve (12), Range Five (5), Coast District; the west half (W. 1/2) of Section Twenty-two (22), Township Twelve (12), Range Five (5), Coast District; the northeast quarter (N.E. 1/4) of Section Twenty-three (23), Township Twelve (12), Range Five (5), Coast District; the northwest quarter (N.W. 1/4) of Section Twenty-three (23), Township Twelve (12), Range Five (5), Coast District; the southeast quarter (S.E. 1/4) of Section Twenty-three (23), Township Twelve (12), Range Five (5), Coast District; the east half (E. 1/2) of Section Twenty-three (23), Township Twelve (12), Range Five (5), Coast District; the west half (W. 1/2) of Section Twenty-three (23), Township Twelve (12), Range Five (5), Coast District; the northeast quarter (N.E. 1/4) of Section Twenty-four (24), Township Twelve (12), Range Five (5), Coast District; the northwest quarter (N.W. 1/4) of Section Twenty-four (24), Township Twelve (12), Range Five (5), Coast District; the southeast quarter (S.E. 1/4) of Section Twenty-four (24), Township Twelve (12), Range Five (5), Coast District; the east half (E. 1/2) of Section Twenty-four (24), Township Twelve (12), Range Five (5), Coast District; the west half (W. 1/2) of Section Twenty-four (24), Township Twelve (12), Range Five (5), Coast District; the northeast quarter (N.E. 1/4) of Section Twenty-five (25), Township Twelve (12), Range Five (5), Coast District; the northwest quarter (N.W. 1/4) of Section Twenty-five (25), Township Twelve (12), Range Five (5), Coast District; the southeast quarter (S.E. 1/4) of Section Twenty-five (25), Township Twelve (12), Range Five (5), Coast District; the east half (E. 1/2) of Section Twenty-five (25), Township Twelve (12), Range Five (5), Coast District; the west half (W. 1/2) of Section Twenty-five (25), Township Twelve (12), Range Five (5), Coast District; the northeast quarter (N.E. 1/4) of Section Twenty-six (26), Township Twelve (12), Range Five (5), Coast District; the northwest quarter (N.W. 1/4) of Section Twenty-six (26), Township Twelve (12), Range Five (5), Coast District; the southeast quarter (S.E. 1/4) of Section Twenty-six (26), Township Twelve (12), Range Five (5), Coast District; the east half (E. 1/2) of Section Twenty-six (26), Township Twelve (12), Range Five (5), Coast District; the west half (W. 1/2) of Section Twenty-six (26), Township Twelve (12), Range Five (5), Coast District; the northeast quarter (N.E. 1/4) of Section Twenty-seven (27), Township Twelve (12), Range Five (5), Coast District; the northwest quarter (N.W. 1/4) of Section Twenty-seven (27), Township Twelve (12), Range Five (5), Coast District; the southeast quarter (S.E. 1/4) of Section Twenty-seven (27), Township Twelve (12), Range Five (5), Coast District; the east half (E. 1/2) of Section Twenty-seven (27), Township Twelve (12), Range Five (5), Coast District; the west half (W. 1/2) of Section Twenty-seven (27), Township Twelve (12), Range Five (5), Coast District; the northeast quarter (N.E. 1/4) of Section Twenty-eight (28), Township Twelve (12), Range Five (5), Coast District; the northwest quarter (N.W. 1/4) of Section Twenty-eight (28), Township Twelve (12), Range Five (5), Coast District; the southeast quarter (S.E. 1/4) of Section Twenty-eight (28), Township Twelve (12), Range Five (5), Coast District; the east half (E. 1/2) of Section Twenty-eight (28), Township Twelve (12), Range Five (5), Coast District; the west half (W. 1/2) of Section Twenty-eight (28), Township Twelve (12), Range Five (5), Coast District; the northeast quarter (N.E. 1/4) of Section Twenty-nine (29), Township Twelve (12), Range Five (5), Coast District; the northwest quarter (N.W. 1/4) of Section Twenty-nine (29), Township Twelve (12), Range Five (5), Coast District; the southeast quarter (S.E. 1/4) of Section Twenty-nine (29), Township Twelve (12), Range Five (5), Coast District; the east half (E. 1/2) of Section Twenty-nine (29), Township Twelve (12), Range Five (5), Coast District; the west half (W. 1/2) of Section Twenty-nine (29), Township Twelve (12), Range Five (5), Coast District; the northeast quarter (N.E. 1/4) of Section Thirty (30), Township Twelve (12), Range Five (5), Coast District; the northwest quarter (N.W. 1/4) of Section Thirty (30), Township Twelve (12), Range Five (5), Coast District; the southeast quarter (S.E. 1/4) of Section Thirty (30), Township Twelve (12), Range Five (5), Coast District; the east half (E. 1/2) of Section Thirty (30), Township Twelve (12), Range Five (5), Coast District; the west half (W. 1/2) of Section Thirty (30), Township Twelve (12), Range Five (5), Coast District; the northeast quarter (N.E. 1/4) of Section Thirty-one (31), Township Twelve (12), Range Five (5), Coast District; the northwest quarter (N.W. 1/4) of Section Thirty-one (31), Township Twelve (12), Range Five (5), Coast District; the southeast quarter (S.E. 1/4) of Section Thirty-one (31), Township Twelve (12), Range Five (5), Coast District; the east half (E. 1/2) of Section Thirty-one (31), Township Twelve (12), Range Five (5), Coast District; the west half (W. 1/2) of Section Thirty-one (31), Township Twelve (12), Range Five (5), Coast District; the northeast quarter (N.E. 1/4) of Section Thirty-two (32), Township Twelve (12), Range Five (5), Coast District; the northwest quarter (N.W. 1/4) of Section Thirty-two (32), Township Twelve (12), Range Five (5), Coast District; the southeast quarter (S.E. 1/4) of Section Thirty-two (32), Township Twelve (12), Range Five (5), Coast District; the east half (E. 1/2) of Section Thirty-two (32), Township Twelve (12), Range Five (5), Coast District; the west half (W. 1/2) of Section Thirty-two (32), Township Twelve (12), Range Five (5), Coast District; the northeast quarter (N.E. 1/4) of Section Thirty-three (33), Township Twelve (12), Range Five (5), Coast District; the northwest quarter (N.W. 1/4) of Section Thirty-three (33), Township Twelve (12), Range Five (5), Coast District; the southeast quarter (S.E. 1/4) of Section Thirty-three (33), Township Twelve (12), Range Five (5), Coast District; the east half (E. 1/2) of Section Thirty-three (33), Township Twelve (12), Range Five (5), Coast District; the west half (W. 1/2) of Section Thirty-three (33), Township Twelve (12), Range Five (5), Coast District; the northeast quarter (N.E. 1/4) of Section Thirty-four (34), Township Twelve (12), Range Five (5), Coast District; the northwest quarter (N.W. 1/4) of Section Thirty-four (34), Township Twelve (12), Range Five (5), Coast District; the southeast quarter (S.E. 1/4) of Section Thirty-four (34), Township Twelve (12), Range Five (5), Coast District; the east half (E. 1/2) of Section Thirty-four (34), Township Twelve (12), Range Five (5), Coast District; the west half (W. 1/2) of Section Thirty-four (34), Township Twelve (12), Range Five (5), Coast District; the northeast quarter (N.E. 1/4) of Section Thirty-five (35), Township Twelve (12), Range Five (5), Coast District; the northwest quarter (N.W. 1/4) of Section Thirty-five (35), Township Twelve (12), Range Five (5), Coast District; the southeast quarter (S.E. 1/4) of Section Thirty-five (35), Township Twelve (12), Range Five (5), Coast District; the east half (E. 1/2) of Section Thirty-five (35), Township Twelve (12), Range Five (5), Coast District; the west half (W. 1/2) of Section Thirty-five (35), Township Twelve (12), Range Five (5), Coast District; the northeast quarter (N.E. 1/4) of Section Thirty-six (36), Township Twelve (12), Range Five (5), Coast District; the northwest quarter (N.W. 1/4) of Section Thirty-six (36), Township Twelve (12), Range Five (5), Coast District; the southeast quarter (S.E. 1/4) of Section Thirty-six (36), Township Twelve (12), Range Five (5), Coast District; the east half (E. 1/2) of Section Thirty-six (36), Township Twelve (12), Range Five (5), Coast District; the west half (W. 1/2) of Section Thirty-six (36), Township Twelve (12), Range Five (5), Coast District; the northeast quarter (N.E. 1/4) of Section Thirty-seven (37), Township Twelve (12), Range Five (5), Coast District; the northwest quarter (N.W. 1/4) of Section Thirty-seven (37), Township Twelve (12), Range Five (5), Coast District; the southeast quarter (S.E. 1/4) of Section Thirty-seven (37), Township Twelve (12), Range Five (5), Coast District; the east half (E. 1/2) of Section Thirty-seven (37), Township Twelve (12), Range Five (5), Coast District; the west half (W. 1/2) of Section Thirty-seven (37), Township Twelve (12), Range Five (5), Coast District; the northeast quarter (N.E. 1/4) of Section Thirty-eight (38), Township Twelve (12), Range Five (5), Coast District; the northwest quarter (N.W. 1/4) of Section Thirty-eight (38), Township Twelve (12), Range Five (5), Coast District; the southeast quarter (S.E. 1/4) of Section Thirty-eight (38), Township Twelve (12), Range Five (5), Coast District; the east half (E. 1/2) of Section Thirty-eight (38), Township Twelve (12), Range Five (5), Coast District; the west half (W. 1/2) of Section Thirty-eight (38), Township Twelve (12), Range Five (5), Coast District; the northeast quarter (N.E. 1/4) of Section Thirty-nine (39), Township Twelve (12), Range Five (5), Coast District; the northwest quarter (N.W. 1/4) of Section Thirty-nine (39), Township Twelve (12), Range Five (5), Coast District; the southeast quarter (S.E. 1/4) of Section Thirty-nine (39), Township Twelve (12), Range Five (5), Coast District; the east half (E. 1/2) of Section Thirty-nine (39), Township Twelve (12), Range Five (5), Coast District; the west half (W. 1/2) of Section Thirty-nine (39), Township Twelve (12), Range Five (5), Coast District; the northeast quarter (N.E. 1/4) of Section Forty (40), Township Twelve (12), Range Five (5), Coast District; the northwest quarter (N.W. 1/4) of Section Forty (40), Township Twelve (12), Range Five (5), Coast District; the southeast quarter (S.E. 1/4) of Section Forty (40), Township Twelve (12), Range Five (5), Coast District; the east half (E. 1/2) of Section Forty (40), Township Twelve (12), Range Five (5), Coast District; the west half (W. 1/2) of Section Forty (40), Township Twelve (12), Range Five (5), Coast District; the northeast quarter (N.E. 1/4) of Section Forty-one (41), Township Twelve (12), Range Five (5), Coast District; the northwest quarter (N.W. 1/4) of Section Forty-one (41), Township Twelve (12), Range Five (5), Coast District; the southeast quarter (S.E. 1/4) of Section Forty-one (41), Township Twelve (12), Range Five (5), Coast District; the east half (E. 1/2) of Section Forty-one (41), Township Twelve (12), Range Five (5), Coast District; the west half (W. 1/2) of Section Forty-one (41), Township Twelve (12), Range Five (5), Coast District; the northeast quarter (N.E. 1/4) of Section Forty-two (42), Township Twelve (12), Range Five (5), Coast District; the northwest quarter (N.W. 1/4) of Section Forty-two (42), Township Twelve (12), Range Five (5), Coast District; the southeast quarter (S.E. 1/4) of Section Forty-two (42), Township Twelve (12), Range Five (5), Coast District; the east half (E. 1/2) of Section Forty-two (42), Township Twelve (12), Range Five (5), Coast District; the west half (W. 1/2) of Section Forty-two (42), Township Twelve (12), Range Five (5), Coast District; the northeast quarter (N.E. 1/4) of Section Forty-three (43), Township Twelve (12), Range Five (5), Coast District; the northwest quarter (N.W. 1/4) of Section Forty-three (43), Township Twelve (12), Range Five (5), Coast District; the southeast quarter (S.E. 1/4) of Section Forty-three (43), Township Twelve (12), Range Five (5), Coast District; the east half (E. 1/2) of Section Forty-three (43), Township Twelve (12), Range Five (5), Coast District; the west half (W. 1/2) of Section Forty-three (43), Township Twelve (12), Range Five (5), Coast District; the northeast quarter (N.E. 1/4) of Section Forty-four (44), Township Twelve (12), Range Five (5), Coast District; the northwest quarter (N.W. 1/4) of Section Forty-four (44), Township Twelve (12), Range Five (5), Coast District; the southeast quarter (S.E. 1/4) of Section Forty-four (44), Township Twelve (12), Range Five (5), Coast District; the east half (E. 1/2) of Section Forty-four (44), Township Twelve (12), Range Five (5), Coast District; the west half (W. 1/2) of Section Forty-four (44), Township Twelve (12), Range Five (5), Coast District; the northeast quarter (N.E. 1/4) of Section Forty-five (45), Township Twelve (12), Range Five (5), Coast District; the northwest quarter (N.W. 1/4) of Section Forty-five (45), Township Twelve (12), Range Five (5), Coast District; the southeast quarter (S.E. 1/4) of Section Forty-five (45), Township Twelve (12), Range Five (5), Coast District; the east half (E. 1/2) of Section Forty-five (45), Township Twelve (12), Range Five (5), Coast District; the west half (W. 1/2) of Section Forty-five (45), Township Twelve (12), Range Five (5), Coast District; the northeast quarter (N.E. 1/4) of Section Forty-six (46), Township Twelve (12), Range Five (5), Coast District; the northwest quarter (N.W. 1/4) of Section Forty-six (46), Township Twelve (12), Range Five (5), Coast District; the southeast quarter (S.E. 1/4) of Section Forty-six (46), Township Twelve (12), Range Five (5), Coast District; the east half (E. 1/2) of Section Forty-six (46), Township Twelve (12), Range Five (5), Coast District; the west half (W. 1/2) of Section Forty-six (46), Township Twelve (12), Range Five (5), Coast District; the northeast quarter (N.E. 1/4) of Section Forty-seven (47), Township Twelve (12), Range Five (5), Coast District; the northwest quarter (N.W. 1/4) of Section Forty-seven (47), Township Twelve (12), Range Five (5), Coast District; the southeast quarter (S.E. 1/4) of Section Forty-seven (47), Township Twelve (12), Range Five (5), Coast District; the east half (E. 1/2) of Section Forty-seven (47), Township Twelve (12), Range Five (5), Coast District; the west half (W. 1/2) of Section Forty-seven (47), Township Twelve (12), Range Five (5), Coast District; the northeast quarter (N.E. 1/4) of Section Forty-eight (48), Township Twelve (12), Range Five (5), Coast District; the northwest quarter (N.W. 1/4) of Section Forty-eight (48), Township Twelve (12), Range Five (5), Coast District; the southeast quarter (S.E. 1/4) of Section Forty-eight (48), Township Twelve (12), Range Five (5), Coast District; the east half (E. 1/2) of Section Forty-eight (48), Township Twelve (12), Range Five (5), Coast District; the west half (W. 1/2) of Section Forty-eight (48), Township Twelve (12), Range Five (5), Coast District; the northeast quarter (N.E. 1/4) of Section Forty-nine (49), Township Twelve (12), Range Five (5), Coast District; the northwest quarter (N.W. 1/4) of Section Forty-nine (49), Township Twelve (12), Range Five (5), Coast District; the southeast quarter (S.E. 1/4) of Section Forty-nine (49), Township Twelve (12), Range Five (5), Coast District; the east half (E. 1/2) of Section Forty-nine (49), Township Twelve (12), Range Five (5), Coast District; the west half (W. 1/2) of Section Forty-nine (49), Township Twelve (12), Range Five (5), Coast District; the northeast quarter (N.E. 1/4) of Section Fifty (50), Township Twelve (12), Range Five (5), Coast District; the northwest quarter (N.W. 1/4) of Section Fifty (50), Township Twelve (12), Range Five (5), Coast District; the southeast quarter (S.E. 1/4) of Section Fifty (50), Township Twelve (12), Range Five (5), Coast District; the east half (E. 1/2) of Section Fifty (50), Township Twelve (12), Range Five (5), Coast District; the west half (W. 1/2) of Section Fifty (50), Township Twelve (12), Range Five (5), Coast District; the northeast quarter (N.E. 1/4) of Section Fifty-one (51), Township Twelve (12), Range Five (5), Coast District; the northwest quarter (N.W. 1/4) of Section Fifty-one (51), Township Twelve (12), Range Five (5), Coast District; the southeast quarter (S.E. 1/4) of Section Fifty-one (51), Township Twelve (12), Range Five (5), Coast District; the east half (E. 1/2) of Section Fifty-one (51), Township Twelve (12), Range Five (5), Coast District; the west half (W. 1/2) of Section Fifty-one (51), Township Twelve (12), Range Five (5), Coast District; the northeast quarter (N.E. 1/4) of Section Fifty-two (52), Township Twelve (12), Range Five (5), Coast District; the northwest quarter (N.W. 1/4) of Section Fifty-two (52), Township Twelve (12), Range Five (5), Coast District; the southeast quarter (S.E. 1/4) of Section Fifty-two (52), Township Twelve (12), Range Five (5), Coast District; the east half (E. 1/2) of Section Fifty-two (52), Township Twelve (12), Range Five (5), Coast District; the west half (W. 1/2) of Section Fifty-two (52), Township Twelve (12), Range Five (5), Coast District; the northeast quarter (N.E. 1/4) of Section Fifty-three (53), Township Twelve (12), Range Five (5), Coast District; the northwest quarter (N.W. 1/4) of Section Fifty-three (53), Township Twelve (12), Range Five (5), Coast District; the southeast quarter (S.E. 1/4) of Section Fifty-three (53), Township Twelve (12), Range Five (5), Coast District; the east half (E. 1/2) of Section Fifty-three (53), Township Twelve (12), Range Five (5), Coast District; the west half (W. 1/2) of Section Fifty-three (53), Township Twelve (12), Range Five (5), Coast District; the northeast quarter (N.E. 1/4) of Section Fifty-four (54), Township Twelve (12), Range Five (5), Coast District; the northwest quarter (N.W. 1/4) of Section Fifty-four (54), Township Twelve (12), Range Five (5), Coast District; the southeast quarter (S.E. 1/4) of Section Fifty-four (54), Township Twelve (12), Range Five (5), Coast District; the east half (E. 1/2) of Section Fifty-four (54), Township Twelve (12), Range Five (5), Coast District; the west half (W. 1/2) of Section Fifty-four (54), Township Twelve (12), Range Five (5), Coast District; the northeast quarter (N.E. 1/4) of Section Fifty-five (55), Township Twelve (12), Range Five (5), Coast District; the northwest quarter (N.W. 1/4) of Section Fifty-five (55), Township Twelve (12), Range Five (5), Coast District; the southeast quarter (S.E. 1/4) of Section Fifty-five (55), Township Twelve (12), Range Five (5), Coast District; the east half (E. 1/2) of Section Fifty-five (55), Township Twelve (12), Range Five (5), Coast District; the west half (W. 1/2) of Section Fifty-five (55), Township Twelve (12), Range Five (5), Coast District; the northeast quarter (N.E. 1/4) of Section Fifty-six (56), Township Twelve (12), Range Five (5), Coast District; the northwest quarter (N.W. 1/4) of Section Fifty-six (56), Township Twelve (12), Range Five (5), Coast District; the southeast quarter (S.E. 1/4) of Section Fifty-six (56), Township Twelve (12), Range Five (5), Coast District; the east half (E. 1/2) of Section Fifty-six (56), Township Twelve (12), Range Five (5), Coast District; the west half (W. 1/2) of Section Fifty-six (56), Township Twelve (12), Range Five (5), Coast District; the northeast quarter (N.E. 1/4) of Section Fifty-seven (57), Township Twelve (12), Range Five (5), Coast District; the northwest quarter (N.W. 1/4) of Section Fifty-seven (57), Township Twelve (12), Range Five (5), Coast District; the southeast quarter (S.E. 1/4) of Section Fifty-seven (57), Township Twelve (12), Range Five (5), Coast District; the east half (E. 1/2) of Section Fifty-seven (57), Township Twelve (12), Range Five (5), Coast District; the west half (W. 1/2) of Section Fifty-seven (57), Township Twelve (12), Range Five (5), Coast District; the northeast quarter (N.E. 1/4) of Section Fifty-eight (58), Township Twelve (12), Range Five (5), Coast District; the northwest quarter (N.W. 1/4) of Section Fifty-eight (58), Township Twelve (12), Range Five (5), Coast District; the southeast quarter (S.E. 1/4) of Section Fifty-eight (58), Township Twelve (12), Range Five (5), Coast District; the east half (E. 1/2) of Section Fifty-eight (58), Township Twelve (12), Range Five (5), Coast District; the west half (W. 1/2) of Section Fifty-eight (58), Township Twelve (12), Range Five (5), Coast District; the northeast quarter (N.E. 1/4) of Section Fifty-nine (59), Township Twelve (12), Range Five (5), Coast District; the northwest quarter (N.W. 1/4) of Section Fifty-nine (59), Township Twelve (12), Range Five (5), Coast District; the southeast quarter (S.E. 1/4) of Section Fifty-nine (59), Township Twelve (12), Range Five (5), Coast District; the east half (E. 1/2) of Section Fifty-nine (59), Township Twelve (12), Range Five (5), Coast District; the west half (W. 1/2) of Section Fifty-nine (59), Township Twelve (12), Range Five (5), Coast District; the northeast quarter (N.E. 1/4) of Section Sixty (60), Township Twelve (12), Range Five (5), Coast District; the northwest quarter (N.W. 1/4) of Section Sixty (60), Township Twelve (12), Range Five (5), Coast District; the southeast quarter (S.E. 1/4) of Section Sixty (60), Township Twelve (12), Range Five (5), Coast District; the east half (E. 1/2) of Section Sixty (60), Township Twelve (12), Range Five (5), Coast District; the west half (W. 1/2) of Section Sixty (60), Township Twelve (12), Range Five (5), Coast District; the northeast quarter (N.E. 1/4) of Section Sixty-one (61), Township Twelve (12), Range Five (5), Coast District; the northwest quarter (N.W. 1/4) of Section Sixty-one (61), Township Twelve (12), Range Five (5), Coast District; the southeast quarter (S.E. 1/4) of Section Sixty-one (61), Township Twelve (12), Range Five (5), Coast District; the east half (E. 1/2) of Section Sixty-one (61), Township Twelve (12), Range Five (5), Coast District; the west half (W. 1/2) of Section Sixty-one (61), Township Twelve (12), Range Five (5), Coast District; the northeast quarter (N.E. 1/4) of Section Sixty-two (62), Township Twelve (12), Range Five (5), Coast District; the northwest quarter (N.W. 1/4) of Section Sixty-two (62), Township Twelve (12), Range Five (5), Coast District; the southeast quarter (S.E. 1/4) of Section Sixty-two (62), Township Twelve (12), Range Five (5), Coast District; the east half (E. 1/2) of Section Sixty-two (62), Township Twelve (12), Range Five (5), Coast District; the west half (W. 1/2) of Section Sixty-two (62), Township Twelve (12), Range Five (5), Coast District; the northeast quarter (N.E. 1/4) of Section Sixty-three (63), Township Twelve (12), Range Five (5), Coast District; the northwest quarter (N.W. 1/4) of Section Sixty-three (63), Township Twelve (12), Range Five (5), Coast District; the southeast quarter (S.E. 1/4) of Section Sixty-three (63), Township Twelve (12), Range Five (5), Coast District; the east half (E. 1/2) of Section Sixty-three (63), Township Twelve (12), Range Five (5), Coast District; the west half (W. 1/2) of Section Sixty-three (63), Township Twelve (12), Range Five (5), Coast District; the northeast quarter (N.E. 1/4) of Section Sixty-four (64), Township Twelve (12), Range Five (5), Coast District; the northwest quarter (N.W. 1/4) of Section Sixty-four (64), Township Twelve (12), Range Five (5), Coast District; the southeast quarter (S.E. 1/4) of Section Sixty-four (64), Township Twelve (12), Range Five (5), Coast District; the east half (E. 1/2) of Section Sixty-four (64), Township Twelve (12), Range Five (5), Coast District; the west half (W. 1/2) of Section Sixty-four (64), Township Twelve (12), Range Five (5), Coast District; the northeast quarter (N.E. 1/4) of Section Sixty-five (65), Township Twelve (12), Range Five (5), Coast District; the northwest quarter (N.W. 1/4) of Section Sixty-five (65), Township Twelve (12), Range Five (5), Coast District; the southeast quarter (S.E. 1/



A Fast Disappearing Opportunity

To get in on the ground floor at FORT GEORGE. Why will Fort George inevitably grow to be a great city? Because of its strategic location that assures her of a GREAT FUTURE as a distributing centre. Because there is the centre of the richest mining district in America—the CARIBOO DISTRICT. Because great areas of TIMBER, 1,100 MILES OF NAVIGABLE WATERS, EXCELLENT WATER POWERS, are tributary to Fort George. Because there are 250,000 acres of good agricultural lands, open for pre-emption. Because of all the railroad that are building or that have got their charter to build through Fort George. Because all the grain of Alberta and Saskatchewan shall be exported through the Panama Canal, which means that all that grain shall have to come to Fort George before reaching either Prince Rupert or Vancouver. Because Fort George has a better strategic location than Spokane and is the GATEWAY to the Pacific coast of the PEACE RIVER COUNTRY, which covers an area of 3,000,000 acres of the best agricultural land in Canada. Within a few years Fort George will be where Vancouver and Winnipeg are today. This is the time to act. The man with a prompt decision is the man who wins, and you have everything to win if you buy right now, because this summer will see a great activity at Fort George and the prices will advance rapidly. ALL INFORMATION FREE FOR THE ASKING.

SOME GOOD BUYS IN PRINCE RUPERT
Two lots block 11, section 1, \$15,500.00. DOUBLE CORNER, block 9, section 5, \$4,500.00.
Lot and two-room house, block 32, section 5, \$1,000.00.
Lot and house, block 23, section 6, \$4,575.00; very good terms.
Lot and house, block 25, section 6, \$4,100.00; very good terms.
Lot 7, block 39, section 7, \$685.00.
Two lots, block 45, section 7, \$1,100.00; \$500.00 cash.
One lot, block 7, section 7, \$750.00.
Two lots, block 6, section 7, \$1,200.00; this is a snap.
One lot, block 10, \$500.00; best buy in section 7.
Double corner, block 16, section 8, \$750.00.
Two lots, block 15, section 8, \$500.00; nothing cheaper on the market.
One lot, block 30, section 8, \$500.00.
Two lots, block 38, section 8, \$750.00.

TH. COLLART
Sole Agent
Natural Resources Security Co., Ltd.
Box 805 225 6th Street Phone 381

IMPERIAL MACHINE WORKS

ENGINEERS AND MACHINISTS
H. R. Love, Prop., Prince Rupert
Up-to-date Equipment. Work and Prices Right. Engine Work and General Repairing.
Shop, Cow Bay
Agents for Imperial Gasoline Motors.
Phone Blue 25 - P. O. Box 957

L. A. Barbeau

Cartage, Coal and Storage
Reliable Messenger Service

Phone 58 735 3rd Ave.

We Have the Following Cheap Properties For Sale Exclusively

Section 6.
Lots 29-30, Block 22, \$1,850; 1-3 cash, bal. 6 and 12 months.
Section 7.
Lots 15-16-17-18, Block 29, \$500 each; 1-3 cash, bal. 6 and 12.
Section 8.
Lots 18-19-20, Block 20, \$400 each; 1-3 cash, bal. 6 and 12.
Lots 1-2, Block 16, \$900 pair; 1-3 cash, bal. 6 and 12.
Lots 12-13, Block 18, \$950 pair; 1-3 cash, bal. 6 and 12.
Lot 32, Block 3, \$450; 1-3 cash, bal. 6 and 12.

Samuel Harrison & Company

Brokers and Financial Agents
Second Ave. Prince Rupert
Prince Rupert's leading hotel—Savoy.

THE "DARK HORSE" IN THE U. S. CAMPAIGN

OSCAR W. UNDERWOOD



A name which has been persistently cropping up in the columns of the press relating to the presidential campaign in the United States is that of Oscar W. Underwood, whose strong, forceful personality and remarkable abilities seem now likely to place him certainly as the compromise candidate between Champ Clark and Wilson.

Prince George on Run.
The Stewart Trust Co., Ltd., agents for the Grand Trunk Pacific Steamship Company, has been officially notified that commencing with the sailing from Seattle on June 23rd the big liner Prince George will resume its through weekly service to Stewart. The new schedule north from Prince Rupert is as follows: Leave Prince Rupert at 8 a. m. Thursday, arrive at Stewart at 5 o'clock in the afternoon. The Prince George will lay in port three hours, leaving the public wharf at 8 p. m. for the south, reaching Prince Rupert at 6 a. m. Friday. The schedule remains unaltered from that port south.

Sale of Household Furniture.
On Friday next at 2:30 in the flat over the phone office, Third avenue.
FRANK A. ELLIS, Auctioneer.

THE WEATHER.

For twenty-four hours ending 5 a. m., June 25th: Barometer, 29.948; maximum temperature, 65; minimum temperature, 54.

-Church Services-

FIRST PRESBYTERIAN CHURCH
Services every Sunday in the Church Hall at 11 a. m. and 7:30 p. m. Sunday School at 2:30 p. m.
REV. F. W. KERR, M.A., PASTOR

THE FIRST BAPTIST CHURCH
SIXTH AVE. AND MURRAY PLACE
Services every Sunday at 11 a. m. and 7:30 p. m. Sunday School at 2:30 p. m.
REV. W. H. McLEOD, B.A.B.D., PASTOR

THE FIRST METHODIST CHURCH
SIXTH AVE. AND MURRAY PLACE
Services every Sunday at 11 a. m. and 7:30 p. m. Sunday School at 2:30 p. m.
REV. C. R. SING, B.D., PASTOR

THE SALVATION ARMY CITADEL
Granville Court
Sunday services at 11 a. m., 3 and 8 p. m. Sunday School, 1:30 p. m. Week night services—Thursday, Wednesday, Thursday and Saturday.
CAPT. AND MRS. TUTTLE Commanding Officers

"The News" Classified Ads.

—One Cent A Word For Each Insertion—

—THERE ARE NO "DEAD ONES" HERE—

LOCAL JOTTINGS

Mrs. Brooksbank and child returned from a southern visit yesterday on the Princess Sophia.

Miss McPhail returned on the Princess Sophia.

Major Gibson returned from a southern trip yesterday.

Made from fresh, pure, rich cream—ice cream at Keeley's Pharmacy.

Mr. H. B. Cambie, of the Bank of Montreal, Prince Rupert, and his bride are the guests of his father, H. J. Cambie, Haro street for a few days.—Vancouver Province.

Launch Alice B. W. J. Thomas. Phone Green 391. Govt. Wharf.

J. Mason Adams and E. C. Stephenson, representatives of the Hazelton Board of Trade, are in the city to confer with the local board of trade.

Among the passengers north-bound on the Princess Sophia yesterday were W. C. Fairbanks, manager of the Northern Commercial Company, one of the largest trading companies in Alaska and the Yukon, and J. C. Griffith, manager of a large trading company operating in Fairbanks and vicinity. Mr. Griffith and Mr. Fairbanks came ashore at this port and were escorted about town by their old sordough friend, W. J. M. Sandels, of Kelly, Douglas Co.

Tickets Selling Rapidly.
At Wark's Jewelry Store drawing contest the tickets are selling rapidly and this year's event promises to be one of the best yet held by that well known firm. A \$450 Heintzman piano is first prize and there are sixty-five lesser prizes.

Sold in bulk by quart or pint, delicious, refreshing hot weather necessity, ice cream at Keeley's.

Caledonian Football Club.
There will be practice games tonight for all those wishing to enter the five-a-side football competition on Dominion Day. The entries for which are still open. All football enthusiasts should enter this event as there are sure to be some good games.

Let George Do It.
You will want your piano tuned by a responsible, reliable piano tuner. George Anderson, piano expert from Portland, will be here about July 1st. Leave orders with Paul Kauffmann's music store, opposite new post office.

Subscribe for the Daily News.

FREE! FREE! FREE!
A big beautiful 88 key electric player piano, worth \$1,200 given away to the pool players in the Basement pool room, Empress Theatre building.

Wanted

WANTED—First class wood turner. Prince Rupert Sash & Door Co. 149-17

PORTER wanted at Savoy Hotel. 140

WANTED—Man for cannery store. Apply box E, Daily News. 142-17

GOOD stickerman wanted. Apply Prince Rupert Planing Mills, corner 5th and Fraser Sts. 148-17

Miscellaneous

FOR LEASE—Rooms now occupied by Wanderers Club. Apply at Wark's Jewelry Store. 142-17

NO more men needed at Goose Bay until further notice. The Granby Consolidated M. S. & P. Co. 101-17

For Rent

PIANO for rent. Apply F. D. Keeley's Drug Store. 140-17

FOR RENT—4-room house, 640 8th ave. Apply Phone 313.

FOR LEASE—McIntyre Hall, well heated and lighted. J. H. ROGERS, Phone 116.

For Sale

FOR SALE—Two 9x10 logging engines, with a large quantity of logging gear, wire rope, etc. Apply R. Cunningham & Son, Ltd., Port Essington, B. C. 99-17

Lost and Found

FOUND—Purse of notes and gold. Owner can have same by proving property and paying for advertisement. Apply Daily News Office. 143-17

Personal

MAIRY—Why remain alone? The ideal introduction club leads to happiness and home. Strictly private, highest character. If you wish first class, dependable service, address, with stamp, Mrs. Wilson, Box 1776, Vancouver, B. C.

WATER NOTICE.

For a License to Take and Use Water. Notice is hereby given that the Prince Rupert Hydro-Electric Co., Ltd., of Montreal, Canada, will apply for a license to take and use 100 cubic feet per second of water out of McKnight Creek, which flows in a northeasterly direction through Wm. Agnew application to purchase, and empties into Heceta River about 1 mile above mouth of Browns Creek. The water will be diverted at McKnight's Lake and will be used for power purposes on the land described as Wm. Agnew application to purchase.

This notice was posted on the ground on the 25th day of May, 1912. The application will be filed in the office of the Water Recorder at Prince Rupert, B. C. Objections may be filed with the said Water Recorder or with the Comptroller of Water Rights, Parliament Buildings, Victoria, B. C.

CERTIFICATE OF IMPROVEMENT.
Lost Rocker Mineral Claim, situate in the Skeena Mining Division of Cassiar District. Where located: On the west side of the entrance to Goose Bay, Observatory inlet.

TAKE NOTICE that I, W. T. Kergin, as agent for F. S. Dakers, Free Miners' Certificate No. 33959B, intend 60 days from date hereof to apply to the Mining Recorder for a certificate of improvement for the purpose of obtaining a Crown grant of the above claim.

ALBERNI

A GREAT SEAPORT IN THE MAKING!

Only When Canada Stops Growing Will Investors Cease to Make Money on Land

Do you think Canada is going to stop growing soon? No, of course not. She has only fairly started.

And as Canada grows so must new centres of population develop. The place for the investor to make big profits is in some town or city where development is inevitable.

Take Alberni for Instance

Alberni is as certain to become a large shipping centre as was Vancouver. Situated on the west coast of Vancouver Island—some eight to twenty-four hours nearer the east than is Vancouver—Alberni will shortly see the largest boats of the Pacific docking at her waterfront.

With the Canadian Pacific Railway already there, and the Canadian Northern Railway rushing its tracks toward the city as fast as possible.

Alberni will develop within the next year in a way that will surprise you all.

Your chance to buy a lot in Alberni is something which you cannot afford to overlook.

We do not ask you to buy because of the few reasons we have given above.

But we do want you to get our new booklet about Alberni. It is handsomely illustrated and will tell you about Alberni in a way that is convincing. Get it today.

Lots can now be bought for \$150 on easy terms. See us and talk it over.

Frank A. Ellis

Real Estate Agent
Prince Rupert B.C.

COAL NOTICES.

Skeena Land District—District of Queen Charlotte Islands.
Take notice that I, William Watson, of the City of Prince Rupert, B. C., contractor, intend to apply for a license to prospect for coal and petroleum on and under the following described lands on the west coast of Graham Island:
Commencing at a post planted one mile east of the southeast corner of Coal Lease No. 7168, thence south 80 chains, thence west 80 chains, thence north 80 chains to the place of commencement.

Dated this 22nd day of April, 1912.
WILLIAM WATSON.

Skeena Land District—District of Queen Charlotte Islands.
Take notice that I, William Watson, of the City of Prince Rupert, B. C., contractor, intend to apply for a license to prospect for coal and petroleum on and under the following described lands on the west coast of Graham Island:
Commencing at a post planted one mile east of the southeast corner of Coal Lease No. 7168, thence east 80 chains, thence south 80 chains, thence west 80 chains, thence north 80 chains to the place of commencement.

Dated this 22nd day of April, 1912.
WILLIAM WATSON.

McCaffery & Gibbons

SECTION 1
Lot 13, Block 34, \$14,500.
House and lot on Fraser St., \$5,500.
SECTION 2
Lot 25, Block 20, \$1,500; \$560 cash.
SECTION 5
2 lots on Summit Ave., \$530 each, 1/2 cash.
Lots 9 and 10, Block 17, \$6,000; good terms.
Lot 21, Block 4, with good house, \$3,750; good terms.
Lots 9 and 10, Block 37, with good house, \$3,150; good terms.
SECTION 6
Lot 21, Block 17, with 4-room house and bath, \$2,750.
Lots 21 and 22, Block 31, \$950 each, \$575 cash.
Lot 9, Block 25, with house, \$3,000.
Double corner on Seventh Ave., \$4,000.
Lot 15, Block 1, \$3,000; terms.
Lot 20, Block 1, with 2 small houses renting \$25 per month, \$3,400; good terms.
SECTION 7
Lot 6, Block 15, \$1,375. \$675 cash.
Lots 2 and 3, Block 40, \$1,800 pair.
SECTION 8
Lot 22, Block 14, \$400. \$200 cash.
FOR RENT
Store on Third Ave., near post office.
Store on corner Third Ave. and Seventh St. Flat in Enad Building.
Flat in Washington Building.
4-room house (new) on Seventh Ave., Section 6.
3-room furnished house on Fifth Ave., Section 6, \$30.

INSURANCE.
Niagara Fire Nova Scotia Fire
L'Union Fire Mutual Life
Dominion of Canada Guarantee & Accident Company

McCaffery & Gibbons

Insurance Third Avenue

Great Bargain

Buy a Going Business and Move Right In

80-Acre Ranch for Sale

KITSELAS DISTRICT

Price \$4500.00

Eight acres are slashed, six acres under cultivation, consisting of two acres in potatoes, all up; 1,500 strawberry plants, bearing; 300 hills of rhubarb, the balance in turnips, beets, onions, beans, mull, cabbages, cauliflowers, etc. In addition, 250 apple trees, some will fruit this year; several cherry, pear, crab apple trees, also five dozen gooseberry and currant in bearing and raspberries and many blackberries; a separate flower garden with roses, lilies, etc. Improvements consist of a storey and a half two room house (size 15x15 and 15x22 feet), bath, summer house facing the creek with complete beds, bedding, stoves, screens, cellars size of rooms above. Driven well in the house. Barn 60x30, with loft; shed 100x30 feet from house to barn. Summer house facing the creek within 100 feet. Water capacity, minimum 2000 meters, inches. Fencing, 30,000 picket, forming five portholes. Poultry yard consists of four acres, 50 hens, incubator, 244 egg capacity (cyphers), Colony House brooder, home cutter, 100 feet of galvanized piping for irrigation, 200 feet fall source of creek. Valves, hydrants, fittings, pipe wrenches, spades, shovels, axes, saws, 4 dozen in all tools mentioned, hose, rakes, potato digger, glass frames for hot house. Various other household articles too numerous to mention—in fact, everything appertaining to housekeeping.

—APPLY—

DAVID H. HAYS

Second Ave. and Second Street Prince Rupert

NAVIGABLE WATERS PROTECTION ACT.

Notice is hereby given pursuant to the provisions of Chapter 115 of the Revised Statutes of Canada and Amending Acts that the Ocean Falls Co., Limited, an incorporated company incorporated under the laws of the Province of British Columbia and having its head office in the City of Vancouver in the said Province, has filed with the Minister of Public Works and the Minister of the Interior, a description of the site chosen by the company for the said wharf and other works proposed to be constructed by the company and a description of the lands on which the said works are to be constructed, and that the said company has also filed at the office of the Registrar of Deeds at Victoria, British Columbia, being the proper registry in that behalf a duplicate of the said plan and description and will apply to the Governor General in Council for approval thereof.

Dated this 25th day of May, A. D. 1912.

at Vancouver, B. C.

Solicitors for the Said Company.

TUPPER & GRIFFIN,
Pub. June 3, 1912.

Advertise in

The Daily News



22,000 ACRES

Thirty-four sections of agricultural land at Moricetown, in the Bulkley Valley, near the railway.

This land can be purchased practically at the government price.

Jeremiah H. Kugler, Ltd.

PHONE 317

REAL ESTATE



Prince : Rupert Real Estate

Do you know that there is no better investment in the world?

Our city is growing. The person is blind indeed who cannot see a population here of twenty-five thousand ten years hence. Each year's increase in population will increase the value of Prince Rupert property proportionately. That means dividends if you collect rents; profits if you buy and sell. An investment in Prince Rupert really is one that will not be affected by financial "panics." Come to headquarters if you are looking for a good investment. I would like to show you these, for instance: Lots 20-21, Block 21, Section 6, with 4-room house, \$4,400; \$2,900 cash, bal. 6, 12 and 18 months.

George Leek

618 3rd Ave. Prince Rupert

ATTENTION

You must call and see Keeley!

Delicious, Refreshing ICE CREAM

KEELEY'S PHARMACY
6th St. and 3rd Ave.

SEE THESE

Lots 6 and 7, Block 3, Section 1.

Fine Harbor View.

\$15,500.00.

Will Give Terms.

G. R. Naden Co., Ltd.

SECOND AVENUE